

For Sale - Development Opportunity

Duvall Commercial Land



Colliers Bellevue
11225 SE 6th St., Suite 240
Bellevue, WA 98004
colliers.com

Jeff Kaiser
Senior Vice President
+1 425 453 3145
Jeff.Kaiser@colliers.com

Ryan Olson
Senior Vice President
+1 425 468 0704
Ryan.Olson@colliers.com

Nico deVita
Associate
+1 206 219 2363
Nico.deVita@colliers.com



Table of Contents

01 Executive Summary

02 The Site

03 Comparable Land Sales

04 Location Overview

An aerial photograph of a residential development, featuring a mix of houses, a golf course, and open fields. The image is overlaid with a semi-transparent blue filter. In the center, the number '01' is displayed in a large, white, sans-serif font. Below the number is a short, horizontal blue line. The background shows a winding road, a golf course, and various types of buildings, including a large red barn-like structure.

01

Executive Summary

Executive Summary

Colliers is pleased to exclusively market this 5.46-acre development site located in Duvall, Washington.

This 5.46-acre vacant land parcel is situated in Duvall, Washington, within the Commercial (CO) zoning district. According to a wetland study, approximately 7% of the parcel contains a low-grade wetland. The property is conveniently located near the Big Rock Shopping Center, offering prime access to retail and community amenities. With its strategic positioning and zoning classification, this land presents an exceptional opportunity for development and investment.

Wetland and Geotechnical studies available on request



Investment Highlights

Potential Uses:

- **Commercial Development:** Suitable for office spaces, retail, and service businesses, benefiting from high visibility and proximity to existing retail hubs.
- **Mixed-Use Projects:** Perfect for integrating commercial and residential components to meet the growing demand for versatile spaces.
- **Community Services:** Potential for medical offices, educational facilities, or recreational centers, enhancing local services and amenities.

Location Benefits:

- **High Visibility:** Visibility from Duvall-Monroe Road.
- **Proximity to Big Rock Shopping Center:** Offers immediate access to retail, dining, and essential services.
- **Growing Community:** Duvall's expanding population and vibrant community make this a strategic investment opportunity.
- **Excellent Connectivity:** Easily accessible via major roadways, with proximity to the Seattle metropolitan area.

Duvall, WA Highlights:

- **Charming Atmosphere:** Known for its small-town charm and strong community spirit.
- **Outdoor Recreation:** Surrounded by scenic parks and trails.
- **Economic Growth:** Steady growth in business and residential sectors.



An aerial photograph of a residential development site. The site is a large, rectangular plot of land, mostly covered in dense, dark green trees and shrubs. To the north of the site, there is a cluster of multi-story residential buildings with light-colored facades and dark roofs. A road intersection is visible on the right side of the site, with a road running north-south and another road running east-west. The overall scene is captured from a high angle, providing a clear view of the site's location and surrounding infrastructure.

02

The Site

Allowable Uses Under CO (Commerical) Zoning

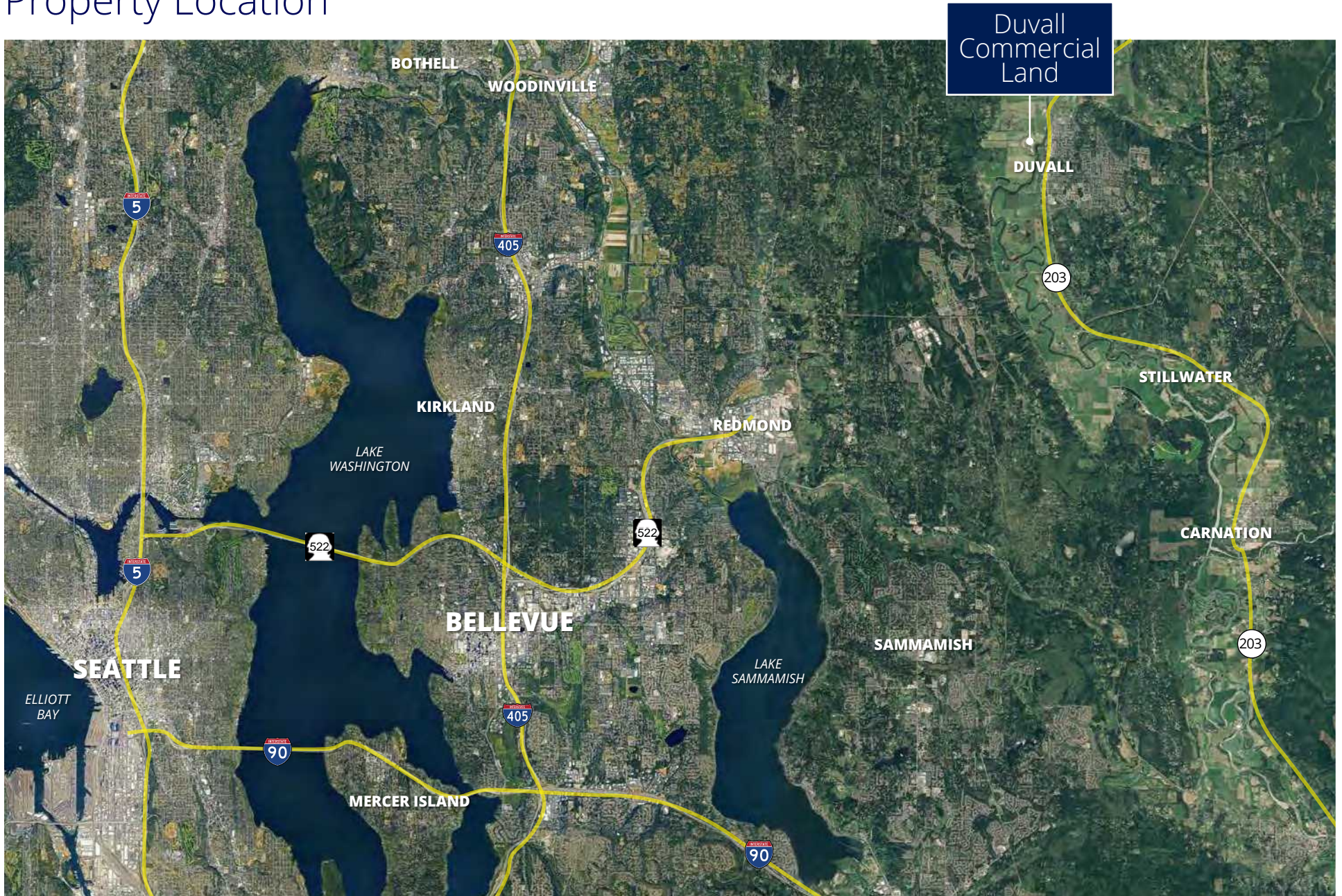
Each building in the Commercial zoning district shall be limited to sixty-five thousand (65,000) square feet unless a conditional use permit in accordance with DMC [Chapter] 14.68 has been granted. Permitted uses in the CO zoning district are:

- Adult entertainment facilities, including theaters, retail stores, clubs
- Animal service facilities, including veterinary clinics, pet shops, indoor pet daycare, grooming services, kennel or cattery
- Automotive rental and leasing
- Automotive service facilities, including gas stations, auto parts stores, auto repair, car washes, auto glass repair
- Cultural facilities including movie or production theaters, libraries, museums, arboretums, conference centers, community centers
- Day care facilities, including family day care providers
- Dwelling units on upper floors
- Eating and drinking establishments without drive-thrus, including restaurants, pubs, wine bars, bars, coffee shops, and bakeries
- Equipment rental (recreational)
- General business and professional offices, including financial institutions, offices for off-site manufacturing uses, attorney, real estate, insurance, accounting, engineering, architectural, planning, science, management, public relations
- Social service facilities, including social service offices, adult and child day care, residential care facilities
- Religious institutions (not including K—12 schools)
- Cemeteries
- Retail sales of vehicles, boats, and recreational vehicles
- Grocery/convenience stores
- Governmental services (court, police, fire, City Hall or similar local government not including public works yards or sewer treatment plants)
- Indoor and outdoor sports facilities including bowling centers, fitness centers, sports clubs, golf courses, driving ranges, swimming pools
- Lodging facilities, including hotels, motels, bed and breakfasts
- Medical and dental facilities, including offices/patient clinics, hospitals, nursing and personal care facilities, medical/dental labs, medical supply stores
- Parks, public or private
- Recreational trails, non-motorized
- Personal services, including beauty salons, barber shops, tanning salons, dry cleaning, upholstery and rug cleaning, coin operated laundries, photography studios, tax preparation, copying, printing and mailing services, travel agencies
- Repair shops, including bicycles, electronics, jewelry
- Retail sales of building, hardware and garden materials
- Retail sales, including of apparel and accessories, home furnishings and furniture, antiques and second hand goods, sporting goods, book, stationary, videos, art and frame supplies, jewelry, hobby, toys and games, photography and electronic equipment, pets and pet supplies, tobacco, wine and liquor, florists, department, drug and variety stores, fabric, appliances
- Senior citizen-assisted living facility
- Specialized schools, including the teaching of art, dance, music, cooking, yoga, driving, pet obedience training, massage, religion, vocational
- Wholesale businesses when accompanied by on site retail showroom and sales outlet (retail space shall be a minimum of twenty-five (25) percent of gross floor area)
- Wireless facilities attached to an existing building and camouflaged²

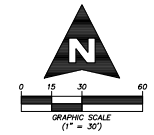
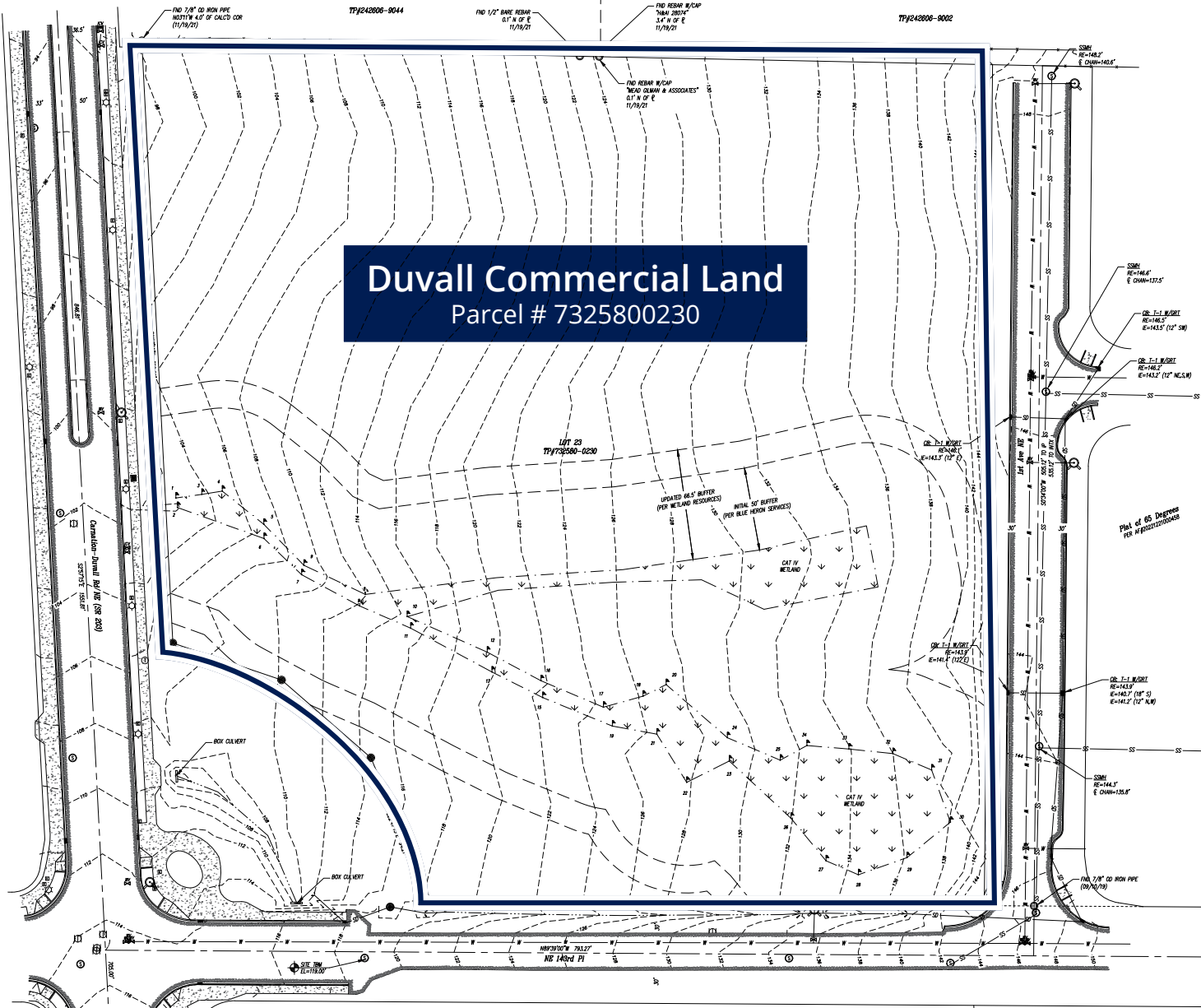
¹See DMC [Chapter] 5.02 for licensing criteria and DMC [Section] 14.64.220 for location restrictions);

²See DMC [Chapter] 14.56)

Property Location



Topographic Survey Map



*CONTOURS DEPICTED @ 2' INTERVALS

LEGEND

- PREVIOUSLY SET REBAR W/CAP, T.S. 21032299
- FND SURVEY MARKER, AS NOTED
- ⊙ CATCH BASIN
- ⊙ CATCH BASIN, T-2 W/BRDCAFE
- ⊙ SANITARY SEWER MANHOLE
- ⊙ FIRE HYDRANT
- ⊙ WATER VALVE
- ⊙ IRRIGATION CONTROL VALVE
- ⊙ ELECTRICAL JUNCTION BOX
- ⊙ LIGHT STANDARD
- ⊙ UTILITY VAULT
- ⊙ GAS VALVE
- ⊙ TELEPHONE MANHOLE
- ⊙ WETLAND FLAG
- X—X— EX CONTOUR MAJOR
- X—X— EX CONTOUR MINOR
- DITCH LINE
- STORM DRAIN LINE
- SANITARY SEWER LINE
- WATER LINE
- EDGE OF ASPHALT
- CONCRETE

SITE DATA

732580-0230
 VACANT LOT
 DUVALL, WA 98019
 2.6 ACRES S.F.

LEGAL DESCRIPTION

LOT 23, RD VISTA RANCHETTES, ACCORDING TO THE PLAT THEREOF RECORDED IN VOLUME 83 OF PLATS, PAGES 86 AND 87, RECORDS OF KING COUNTY, WASHINGTON.
 EXCEPT THAT PORTION BEHELD TO THE CITY OF DUVALL BY DEEDS RECORDED UNDER RECORDING NO(S): 20160323000390 AND 20220608001384.
 SITUATE IN THE COUNTY OF KING STATE OF WASHINGTON.

BASIS OF BEARING

HELD A BEARING OF NORTH 53°44'44" EAST BETWEEN FOUND NORTH QUARTER CORNER MONUMENT FOR SECTION 24 AND FOUND SOUTHWEST CORNER OF LOT 23 MONUMENT TO ORIENT TO THE PLAT OF RD VISTA RANCHETTES AS RECORDED UNDER VOLUME 83 OF PLATS, PAGES 86-87.

DATUM

NAVD 83

PROJECT BENCHMARK

DERIVED FROM GPS OBSERVATIONS UTILIZING THE WASHINGTON STATE REFERENCE NETWORK (WRSN).

SITE BENCHMARK

TOP OF SEWER MANHOLE LID LOCATED ±50' SOUTHWEST OF THE SOUTHWEST PROPERTY CORNER (DEPICTED ON SURVEY).
 EL=118.00'

NOTES

- (1) REPRESENTATION OF BOUNDARY LINES ARE BASED UPON A BOUNDARY SURVEY RECORDED BY ME WITH THE KING COUNTY AUDITOR UNDER RECORDING NO 2022022800011, AN ADDITIONAL 30' OF ROAD DEDICATION OCCURRED ON THE EAST END OF THE SURVEY PARCEL AFTER THE RECORDING OF SAID SURVEY. THESE CHANGES ARE REPRESENTED IN THIS TOPOGRAPHIC SURVEY.
- (2) INFORMATION CONTAINED IN THIS SURVEY IS DERIVED FROM CLIENT PROVIDED RANER TITLE OWNERSHIP AND ENCUMBRANCE AND JUDGEMENT REPORT, FILE NO.87878801, DATED OCTOBER 11, 2023.
- (3) DISTANCES ARE IN FEET AND DECIMALS THEREOF AND REPRESENT CALCULATED ON MEASURED GROUND DISTANCES.
- (4) THE INFORMATION SHOWN HEREON REPRESENTS THE RESULTS OF A SURVEY STARTED BY ME ON 11/30/21 AND SUPPLEMENTED WITH ADDITIONAL INFORMATION ON 02/04/24, AND CAN ONLY BE CONSIDERED AS DEPICTING THE GENERAL SITE CONDITIONS AT THAT TIME.
- (5) UTILITY LOCATIONS SHOWN HEREON ARE BASED UPON ASBUILT FIELD LOCATION OF EXISTING STRUCTURES.
- (6) THE CONTRACTOR SHALL VERIFY THE EXACT LOCATION, ELEVATION AND SIZE OF EXISTING UTILITIES PRIOR TO CONSTRUCTION.
- (7) LOCATION, CATEGORY AND ASSOCIATED BUFFER OF WETLANDS PROVIDED BY BLUE HERON SERVICES DATED 11/10/19. A WETLAND REPORT PROVIDED BY WETLAND RESOURCES INC ON 8/31/23 DESCRIBES THE INCREASED BUFFER SIZE FROM 50' TO 86.5'.

Example Development

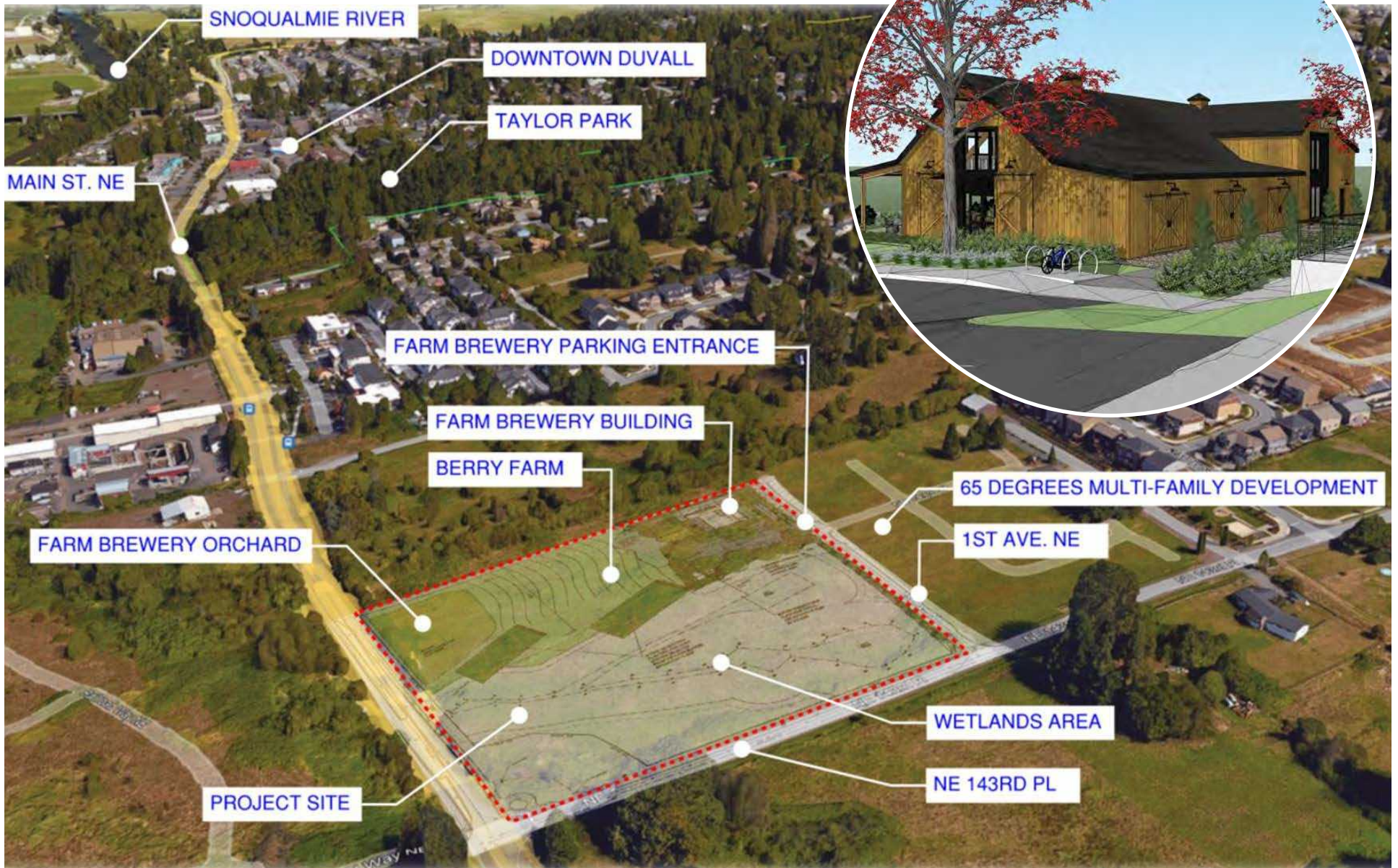
Project Description

Farm Brewery is a Type VB, new construction, 96' long x 60' wide, pole barn style building designed by Spane Buildings Inc. with post-frame and slab-on-grade structure. The building program is an open concept floor plan that includes a walk-up tasting bar, barrel room, seating lounge, restrooms, cold room, and a 1,900 sq. foot brewery production area. The second floor serves as an open storage loft for mechanical and barrel storage purposes. Total square footage of the building including the 2nd story storage loft is 5,617 sq ft. The exterior will host an outdoor covered patio area with seating located on the west side of the building overlooking the farm and capturing evening sunsets.

The Farm Brewery model replicates a winery/vineyard type setting by utilizing its 5-acre lot to establish an on-site farm to grow ingredients that would be used to influence seasonal beer and cider offerings. The farm would allow patrons the opportunity to experience beer as being something that is grown from the land and not manufactured in an industrial factory setting, while also offering a park-like setting for family and friends to gather. The proposed project encapsulates the City's vision of small-town charm where people can enjoy a unique experience by walking through the farm, touring the brewery production area and tasting seasonal beers and ciders being locally produced onsite.



Example Development



Property Aerial



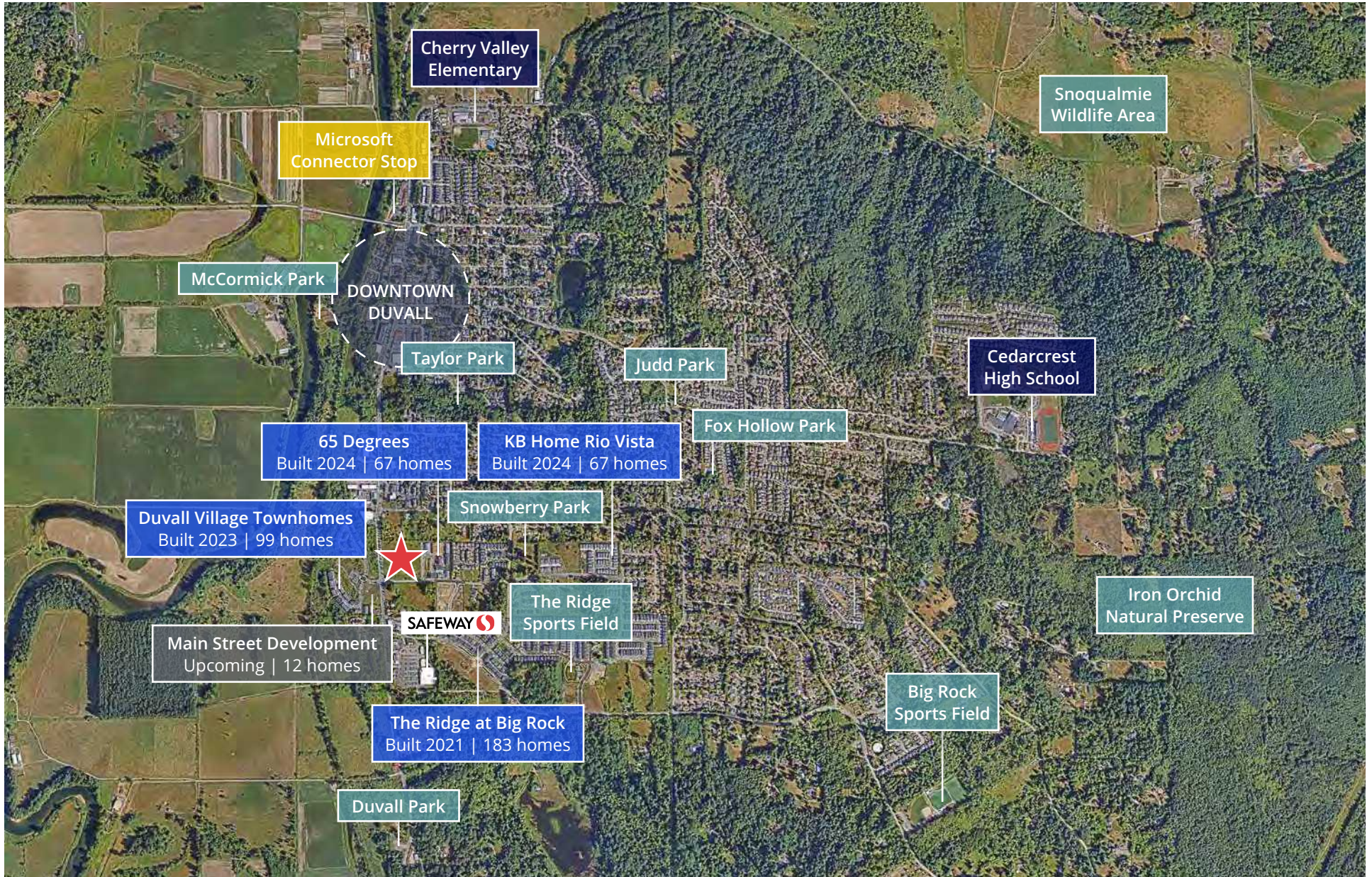
Property Aerial



Property Aerial



Duvall Aerial



An aerial photograph of a residential neighborhood, showing houses, streets, and trees. The image is overlaid with a semi-transparent blue filter and a white border. In the center, the number '03' is displayed in a large, white, sans-serif font. Below the number is a short, horizontal blue line.

03

Comparable Land Sales

Sale Comparables

Address	APN	Zoning	Land Area	Recorded Owner	Sale price	Sale Date
14434 Carnation Duvall Rd NE Duvall, WA	242606-9044	CO	117,344 SF (2.69 AC)	Anjuman E Burhani Seattle	\$1,750,000 (\$14.91/SF)	8/10/2021
XXXX Carnation Duvall Rd NE Duvall, WA	2132301110	MU12	63,314 SF (1.45 AC)	JSGP Ventures LLC (Singh Perminderpal)	\$900,000 (\$14.21/SF)	8/31/2021
14810 Main St NE Duvall, WA	132606-9063	MU12	75,411 SF (1.73 AC)	14810 Duvall LLC	\$970,000 (\$12.86/SF)	6/10/2022
19007 Cascadia Blvd E Tehaleh, WA	0519168011	EPBC	65,384 SF (1.5 AC)	Paari Ventures LLC	\$1,525,000 (\$23.32/SF)	2/23/2024
64th St E (3 Parcels) Sumner, WA	0520305003	Comm	216,755 SF (4.98 AC)	Titus Will Enterprises Inc	\$4,000,000 (\$18.45/SF)	6/13/2022
SR410 E Bonney Lake, WA	0519026003	E	77,101 SF (1.77 AC)	Cab 1 Properties LLC	\$1,300,000 (\$16.86/SF)	10/19/2023
2517 136th Avenue Ct E Sumner, WA	0420123074	Comm	85,552 SF (1.96 AC)	Kim Sing Re Investments LLC	\$1,280,000 (\$14.96/SF)	7/18/2022
2015 Freeway Dr Mount Vernon, WA	34041810100202	C-2	103,324 SF (2.37 AC)	Watson Properties	\$1,140,000 (\$11.03/SF)	9/27/2019

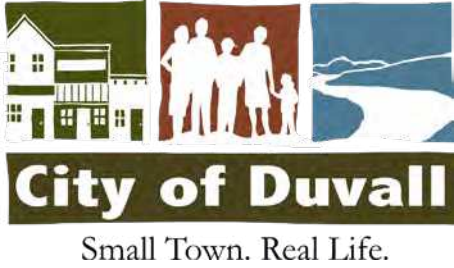
For Sale/ Under Contract Comparables

Address	APN	Zoning	Land Area	Recorded Owner	Asking Price	Status
XXXX NE Big Rock Rd Duvall, WA	729900-0050	MU12	49,909 SF (1.15 AC)	Toll Brothers	\$748,635 (\$15.00/SF)	For Sale
XXXX NE Big Rock Rd Duvall, WA	729900-0040	MU12	36,179 SF (0.83 AC)	Toll Brothers	\$542,685 (\$15.00/SF)	For Sale
XXXX NE Big Rock Rd Duvall, WA	729900-0030	MU12	28,419 SF (0.65 AC)	Toll Brothers	\$426,285 (\$15.00/SF)	For Sale
XXXX NE Big Rock Rd Duvall, WA	729900-0020	MU12	39,310 SF (0.92 AC)	Toll Brothers	\$589,650 (\$15.00/SF)	For Sale
XXXX NE Big Rock Rd Duvall, WA	729900-0010	MU12	46,778 SF (1.07 AC)	Toll Brothers	\$701,670 (\$15.00/SF)	Under LOI
XXXX NE Big Rock Rd Duvall, WA	729902-1180	MUI	76,237 SF (1.75 AC)	Toll Brothers	\$1,143,555 (\$15.00/SF)	Under LOI
XXXX NE Big Rock Rd Duvall, WA	729902-1170	MUI	51,006 SF (1.17 AC)	Toll Brothers	\$765,090 (\$15.00/SF)	Under LOI

An aerial photograph of a residential development, likely a new housing project, featuring numerous houses with dark roofs and light-colored siding. The development is surrounded by green fields and trees. In the background, a dense forest line is visible under a cloudy sky. A thick layer of white fog or mist sits on the ground in the distance. The entire image is overlaid with a semi-transparent blue filter and a thin white border.

04

Location Overview

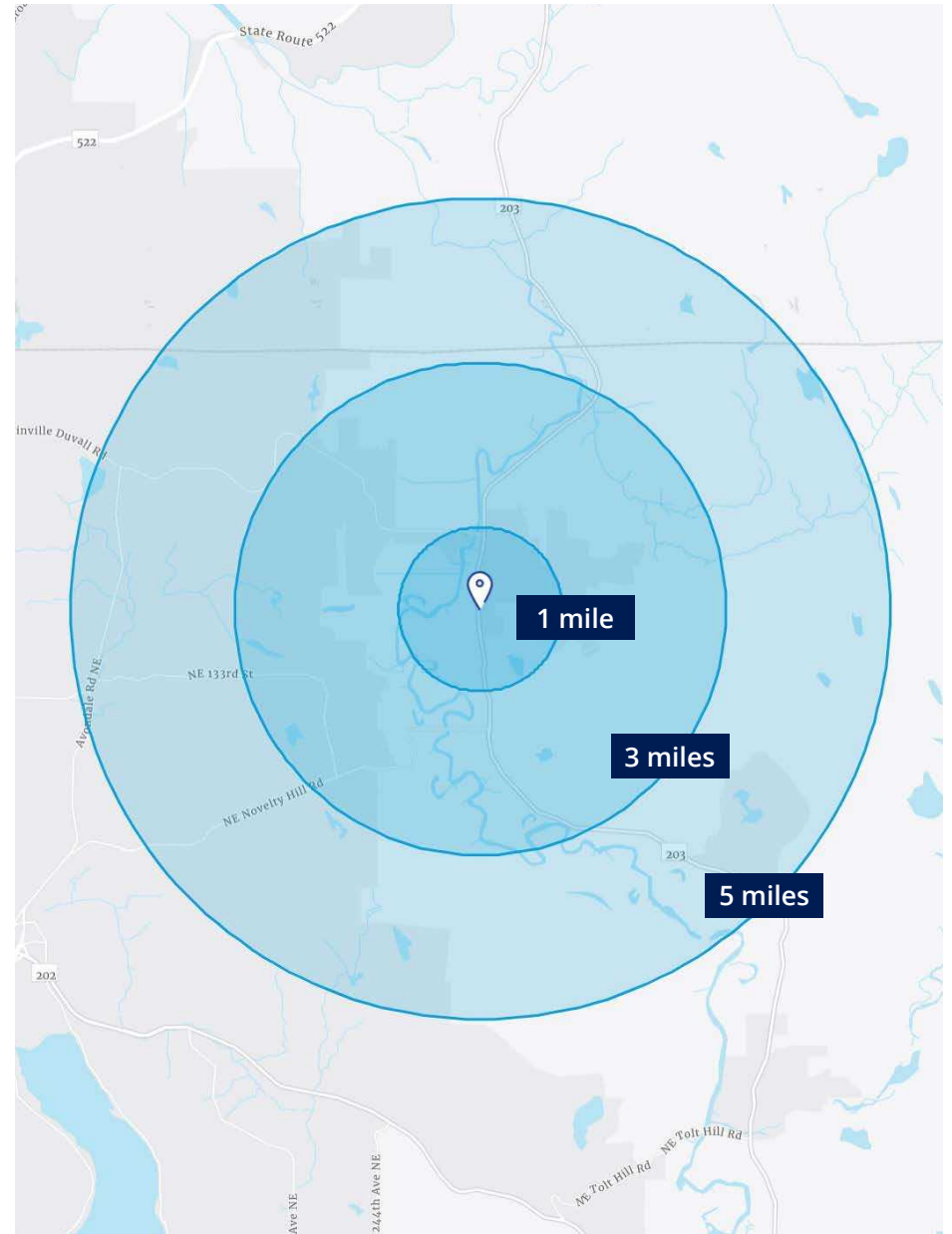


Duvall is a rapidly growing community that presents a unique opportunity for investors looking to capitalize on undeveloped land. Nestled in the scenic Snoqualmie Valley, Duvall offers a blend of small-town charm and strategic growth potential, making it an ideal location for multifamily residential, retail, or light industrial development. With a strong sense of community and proximity to major employment centers like Redmond and Bellevue, Duvall attracts families and professionals seeking a balance between rural tranquility and urban convenience. The city's commitment to sustainable growth, coupled with its vibrant downtown, offers a solid foundation for new development. Investors can leverage Duvall's expanding infrastructure and favorable demographic trends to create high-demand properties that meet the needs of this growing market. By investing in Duvall, you're not just developing land—you're shaping the future of a community on the rise in the Pacific Northwest.



Demographics

	1 mile	3 miles	3 miles
Current Total Population	5,631	18,626	44,998
5 Year Total Population	5,757	18,708	44,945
Current Total Household	1,918	6,893	15,790
5 Year Total Household	1,946	6,850	15,636
Median Household Income	\$186,694	\$176,068	\$197,527
Median Home Value	\$854,581	\$996,649	\$1,120,993
Per Capita Income	\$85,845	\$88,713	\$91,469
Daytime Population	4,430	14,669	33,989
Total Businesses	170	338	737
Total Employees	1,262	2,777	5,655



Duvall Commercial Land



Colliers Bellevue

11225 SE 6th St., Suite 240
Bellevue, WA 98004
colliers.com

Jeff Kaiser

Senior Vice President
+1 425 453 3145
Jeff.Kaiser@colliers.com

Ryan Olson

Senior Vice President
+1 425 468 0704
Ryan.Olson@colliers.com

Nico deVita

Associate
+1 206 219 2363
Nico.deVita@colliers.com

This document has been prepared by Colliers for advertising and general information only. Colliers makes no guarantees, representations or warranties of any kind, expressed or implied, regarding the information including, but not limited to, warranties of content, accuracy and reliability. Any interested party should undertake their own inquiries as to the accuracy of the information. Colliers excludes unequivocally all inferred or implied terms, conditions and warranties arising out of this document and excludes all liability for loss and damages arising there from. This publication is the copyrighted property of Colliers and/or its licensor(s). ©2026. All rights reserved.