



1,260 SF | RETAIL BUILDING | CORNER LOT

34049 MILITARY RD S, AUBURN, WA • AUBURN, WA 98001

LOT SIZE

0.39 AC

SALE TYPE

INVESTMENT
OR
OWNER USER

ZONING

NB
(KING COUNTY)

OFFERED AT

\$1,200,000

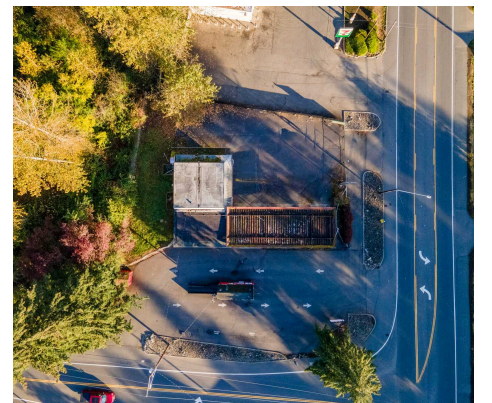
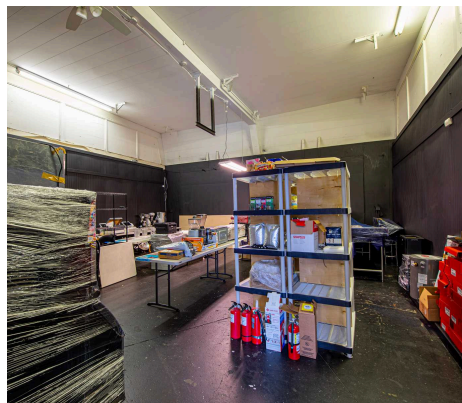
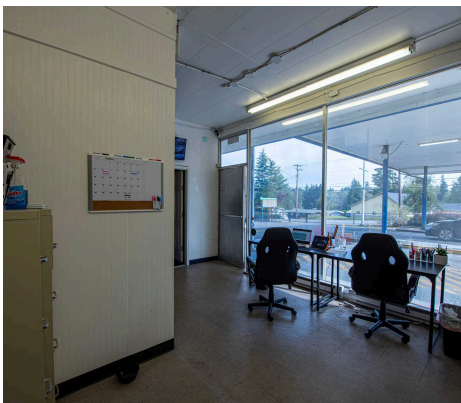
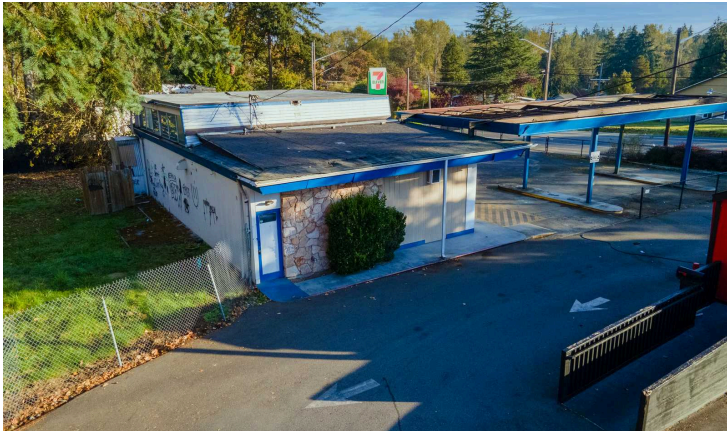
Prime corner lot on Military Rd. in Auburn with excellent visibility and high traffic count. Zoned NB (Neighborhood Business), this property offers diverse commercial and development opportunities. The site includes an espresso stand (currently generating up to \$30K a month in income) and a former auto retail shop building, providing multiple flexible use options. Ideal for businesses seeking a strategic location with easy access to major highways. This is a chance to capitalize on a versatile property in a high-demand area.

ENGEL & VÖLKERS®

Robert Laing
Engel & Völkers Seattle Downtown
(206) 552-0599
robert.laing@evrealestate.com
fontanezlaing.com

John L. Scott®
REAL ESTATE

Francie Zanuzoski
John L. Scott, Inc.
(253) 381-5878
franciezjl@gmail.com
franciez.johnlscott.com



ENGEL & VÖLKERS®

John L. Scott®
REAL ESTATE