

COMMERCIAL BUILDING FOR SALE

1007 SCOTT AVE

BREMERTON, WA 98310

BUILDING FOR SALE

\$985,000



JCM
SILVERDALE, WA
9351 Bayshore DR NW

CALL FOR AN APPOINTMENT

+360-620-5300

jcmpm.com

jeff@jcmpm.com



UNIT D



UNIT F



UNIT E

5 LEASED UNITS



UNIT B

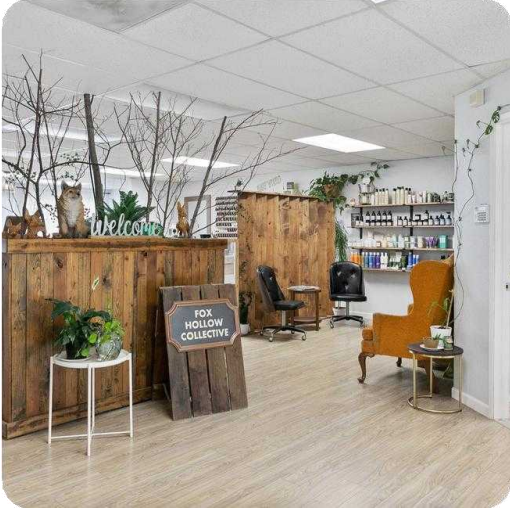
ABOUT THIS PROPERTY:

- • •
- • •
- • •
- • •
- • •
- • •

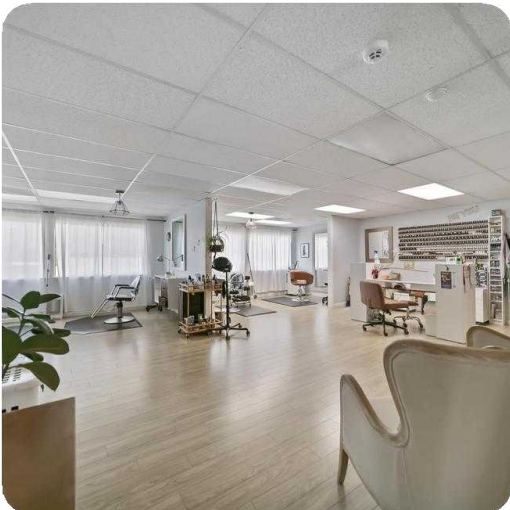
This 7,902 SF building on 10,890 SF of land sits right in the prime retail area of Manette, just off the main stretch of shops/restaurants on E 11th St. It's just blocks away from the Manette bridge which connects to all of the downtown Bremerton hub including theaters, restaurants, upscale condos, Puget Sound Naval Shipyard and the Bremerton/Seattle Ferry terminal.

There are 2 large spaces with entrances located on Scott Ave (Unit A/B & Unit C). These are currently occupied by Manette Day Spa & a coop of beauty/salon stations in Fox Hollow Collective.





UNIT C



There is 100% occupancy with five tenants in six units, the lower units (D, E & F) have entrances off Pitt Ave and currently include Floral Design, Hair Salon and Counseling. There are 15 onsite parking stalls and on street parking available. 3,860 sf of contiguous space could be available for owner/occupancy.



1007 SCOTT AVE

ABOUT MANETTE

Relocate your business to BREMERTON, WA! Manette is a community in Kitsap County, Washington. It was established as a town on April 20, 1891, but was later made part of Bremerton, Washington. Manette is located on Point Herron, commonly known as the Manette Peninsula, in the body of water known as Port Orchard, part of Puget Sound. There is lots of retail & shopping nearby, restaurants and fast food for lunch breaks, YMCA is just up the road, PSNS & Downtown are just across the Manette Bridge, as well as the Bremerton/Seattle Ferry Terminal and fast ferry across to Port Orchard, & amazing bridge/city/water views!



CALL FOR AN APPOINTMENT



+360-620-5300



jcmpm.com



jeff@jcmpm.com

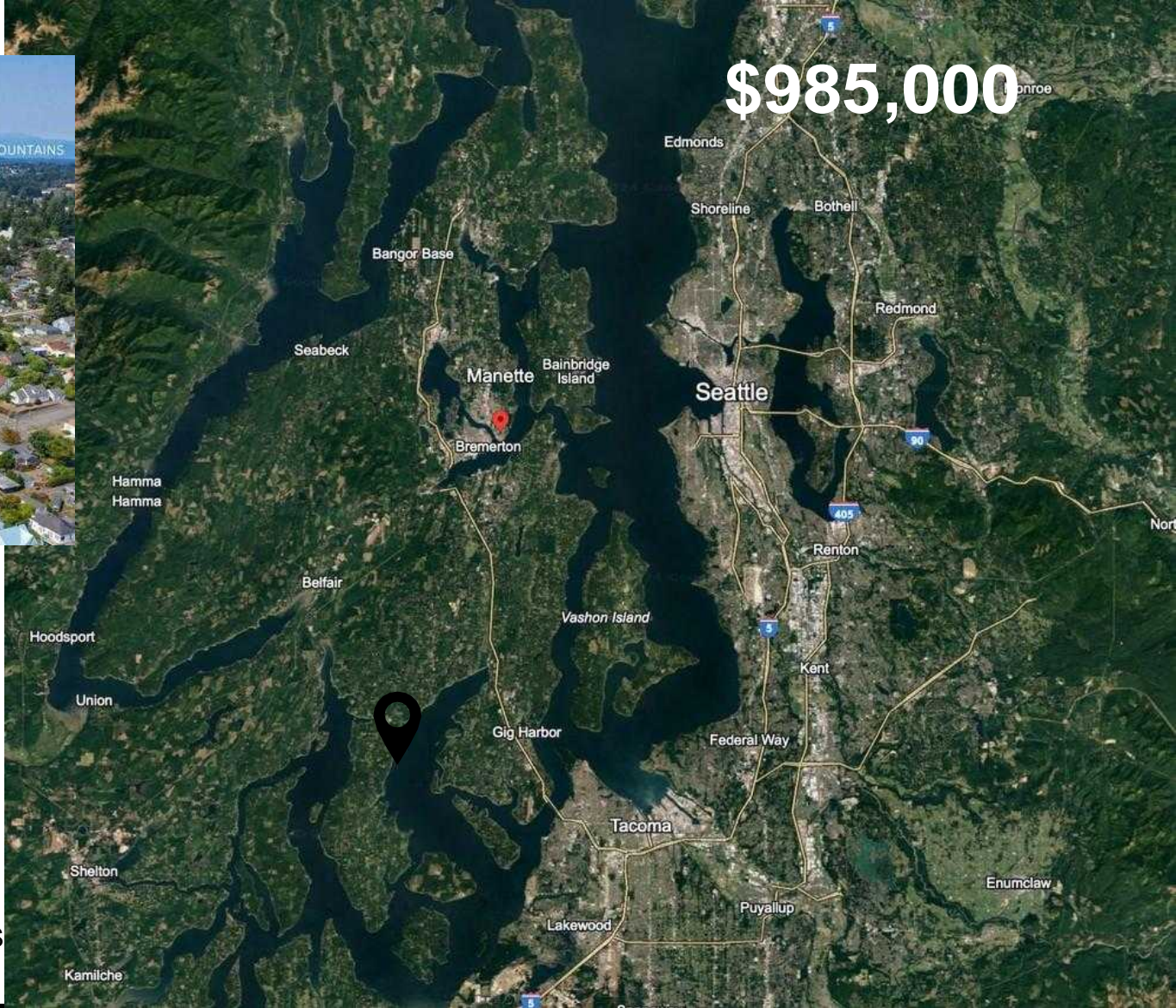
1007 SCOTT AVE

BREMERTON, WA 98310

FOR SALE



\$985,000



EASY ACCESS:

- ✓ State HWY 3 Entrances: N to Bainbridge Island (Ferry to Downtown Seattle)/Kingston (Ferry to Edmonds); S to Hwy 16 Gig Harbor
- ✓ Tacoma- 35 Min
- ✓ Olympic College/Brem HS
- ✓ Nearby to Naval Base Kitsap/Bangor & PSNS

 **JCM**
SILVERDALE, WA
9351 Bayshore DR NW

CALL FOR AN APPOINTMENT

 +360-620-5300

 jcmpm.com

 jeff@jcmpm.com