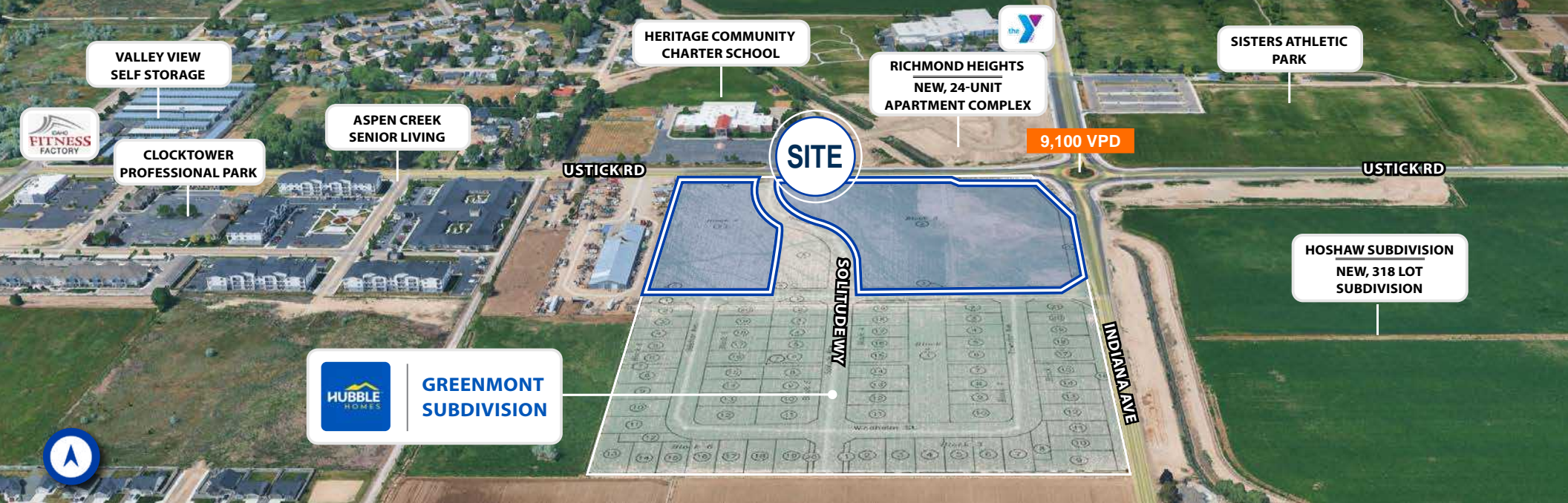


TOK GREENMONT SUBDIVISION

COMMERCIAL

COMMERCIAL DEVELOPMENT LAND FOR SALE | SOLITUDE WAY | CALDWELL, ID 83607



Prominent hard-corner location with full access on the frontage parcels of the new Greenmont Subdivision by Hubble Homes.

Prime opportunity to add needed amenities and services in a commercially underserved submarket.

Directly across from schools, parks, sports facilities and gyms, and surrounded by abundant rooftops.

C-2 (Community Commercial) zoning supports a wide range of commercial uses. Development Agreement has no restrictions for uses in the C-2 zone.

Surrounded by residential development, in Caldwell's path of rapid residential growth, with more to come — historical 5-year growth rate of 21.5%!

Accessible within minutes from I-84 providing accessibility to major area employers, educational facilities, entertainment, and services.

PROPERTY TYPE:	Commercial Land
LOT SIZE:	10.32 Acres
LOT DIVISIBILITY:	3.316 - 7.021 Acres
SALE PRICE:	\$5,400,000 (\$12.00/SF)
PARCEL NO:	R3255210100, R3255210300
ZONING:	C-2, Community Commercial
UTILITIES:	All to Site

CONTACT

SAM MCCASKILL
CCIM
 208.947.0804
 sam@tokcommercial.com

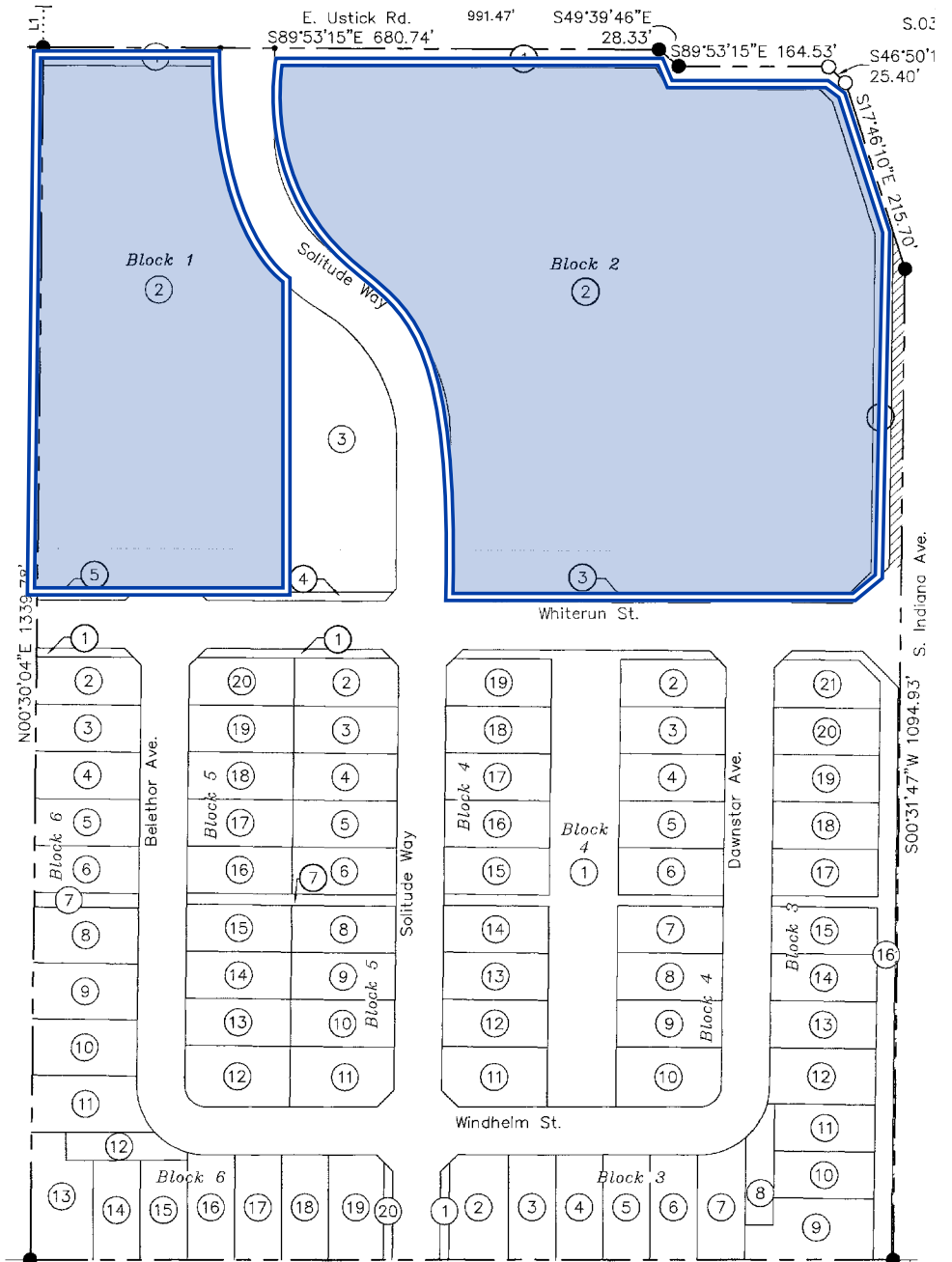
HIGHLIGHTS



DETAILS



UPDATED: 2.12.2026
 THIS PROPERTY IS EXCLUSIVELY MARKETED BY TOK BOISE LLC DBA TOK COMMERCIAL
 This information was obtained from sources believed reliable but cannot be guaranteed. Any opinions or estimates are used for example only.



**PLANNED SUBDIVISIONS
+4,014 PLANNED LOTS**

**ENTITLED SUBDIVISIONS
+4,125 TOTAL LOTS**



POPULATION
72,293
3 MI. RADIUS

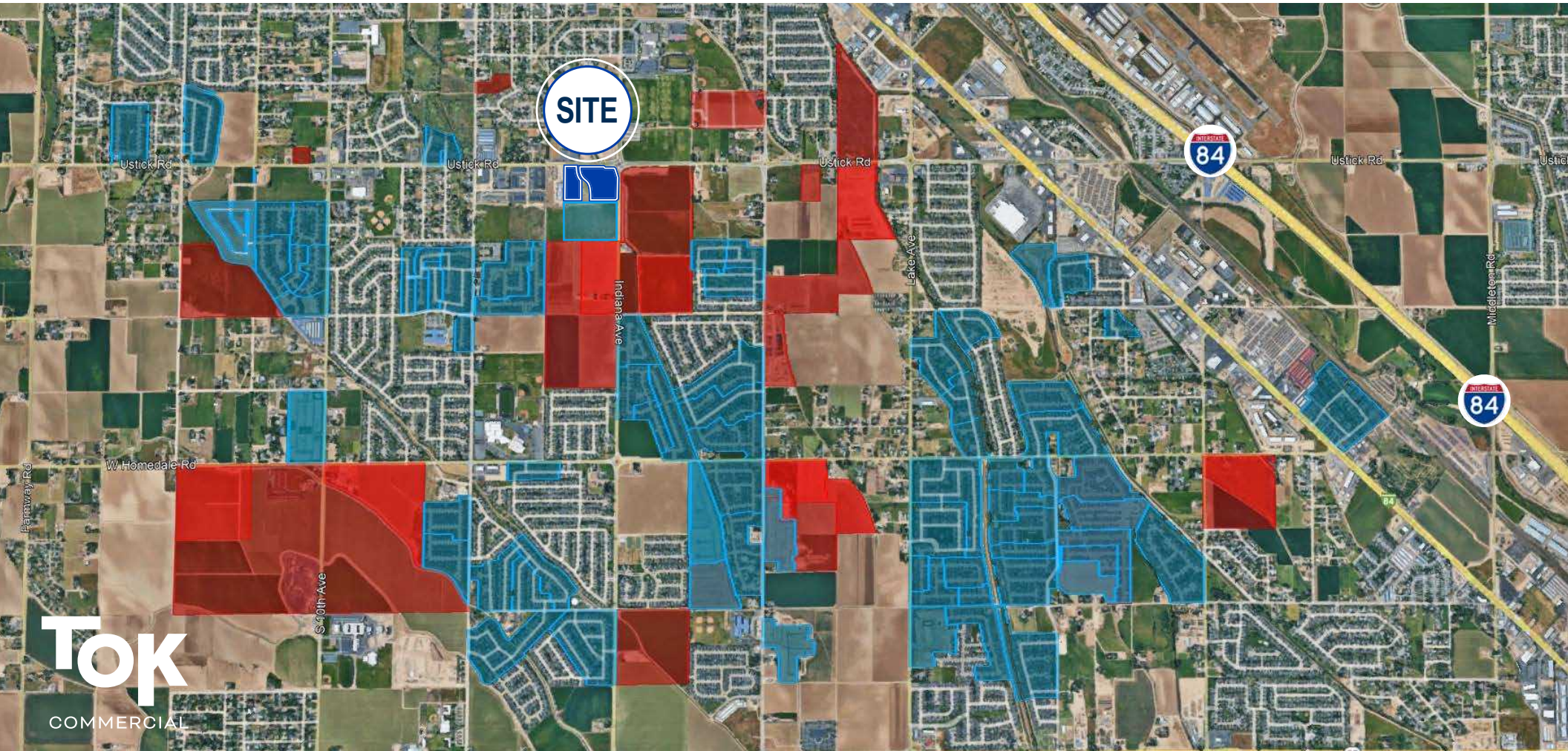


HISTORIC ANN. GROWTH
21.5%
PAST 5 YEARS



AVG. HOUSEHOLD INC.
\$86,111
3 MI. RADIUS

Caldwell is the fastest growing city in the state. It has experienced a 21.5% increase in population over the past five years. Furthermore, it ranked 51st nationally among the fastest-growing cities. The city's commercial and industrial growth has outpaced even its residential growth, with a 40% increase in valuation according to the Canyon County assessor.

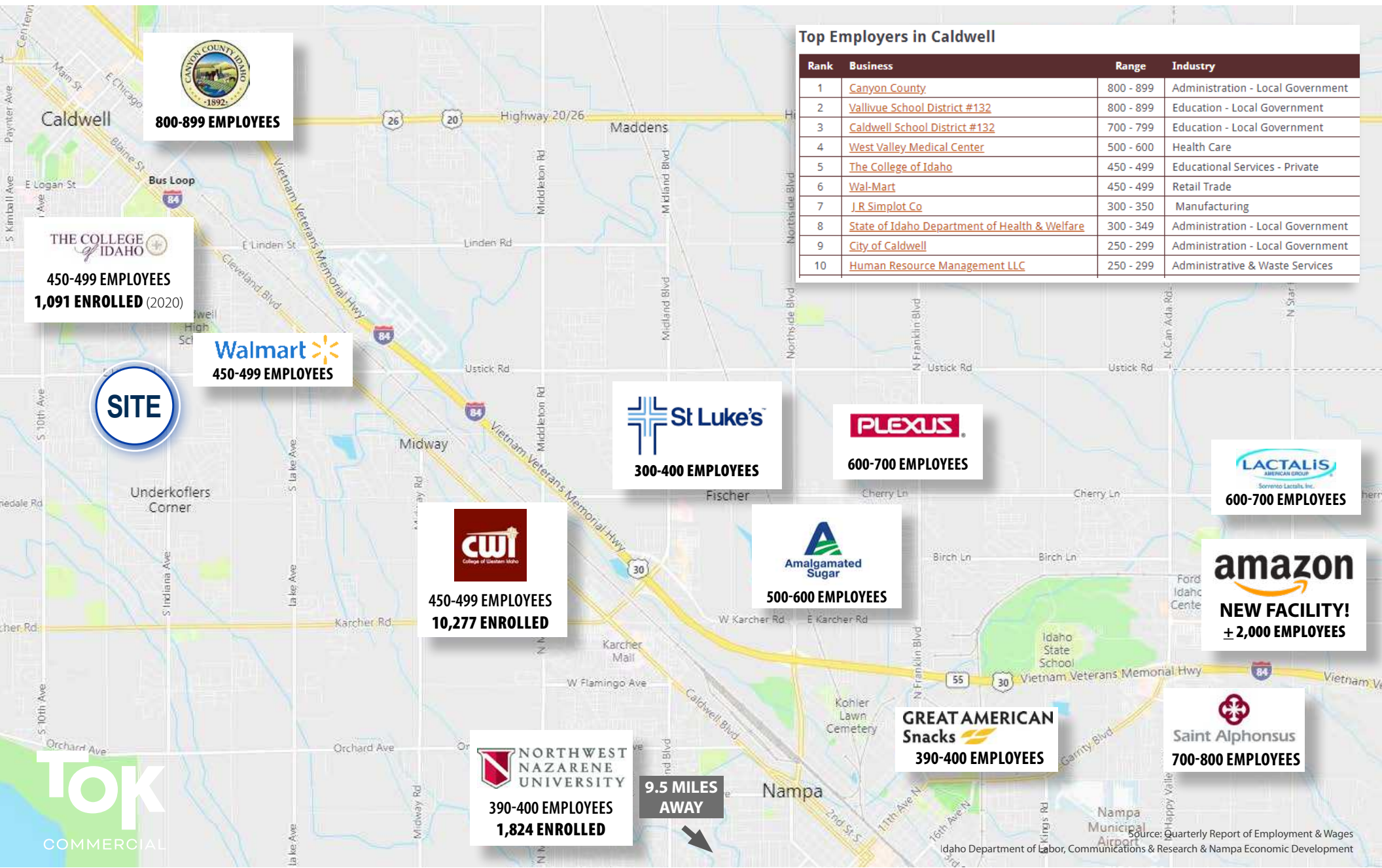


TOK
COMMERCIAL

UPDATED: 2.12.2026

THIS PROPERTY IS EXCLUSIVELY MARKETED BY TOK BOISE LLC DBA TOK COMMERCIAL
This information was obtained from sources believed reliable but cannot be guaranteed. Any opinions or estimates are used for example only.

TOKCOMMERCIAL.COM



800-899 EMPLOYEES

THE COLLEGE OF IDAHO

450-499 EMPLOYEES
1,091 ENROLLED (2020)

Walmart
450-499 EMPLOYEES

SITE



300-400 EMPLOYEES



600-700 EMPLOYEES



450-499 EMPLOYEES
10,277 ENROLLED



500-600 EMPLOYEES



600-700 EMPLOYEES



NEW FACILITY!
± 2,000 EMPLOYEES



Saint Alphonsus
700-800 EMPLOYEES



390-400 EMPLOYEES
1,824 ENROLLED

9.5 MILES AWAY

GREAT AMERICAN Snacks
390-400 EMPLOYEES

Top Employers in Caldwell

Rank	Business	Range	Industry
1	Canyon County	800 - 899	Administration - Local Government
2	Vallivue School District #132	800 - 899	Education - Local Government
3	Caldwell School District #132	700 - 799	Education - Local Government
4	West Valley Medical Center	500 - 600	Health Care
5	The College of Idaho	450 - 499	Educational Services - Private
6	Wal-Mart	450 - 499	Retail Trade
7	J.R. Simplot Co	300 - 350	Manufacturing
8	State of Idaho Department of Health & Welfare	300 - 349	Administration - Local Government
9	City of Caldwell	250 - 299	Administration - Local Government
10	Human Resource Management LLC	250 - 299	Administrative & Waste Services