

10714 1ST AVE S



FOR SALE

*A 2,592 Square Feet Standalone Industrial Shop Space  
for Sale in Seattle's King County*

10714 1ST AVE S | SEATTLE, WA

6,600

SF LAND AREA

10'

CLEAR HEIGHT

## Property Highlights

2,592 SF shop space

330 SF office

6,600 SF land area

Zoned CB - King County

600 amps, 240V, 3-Phase

10' clear height

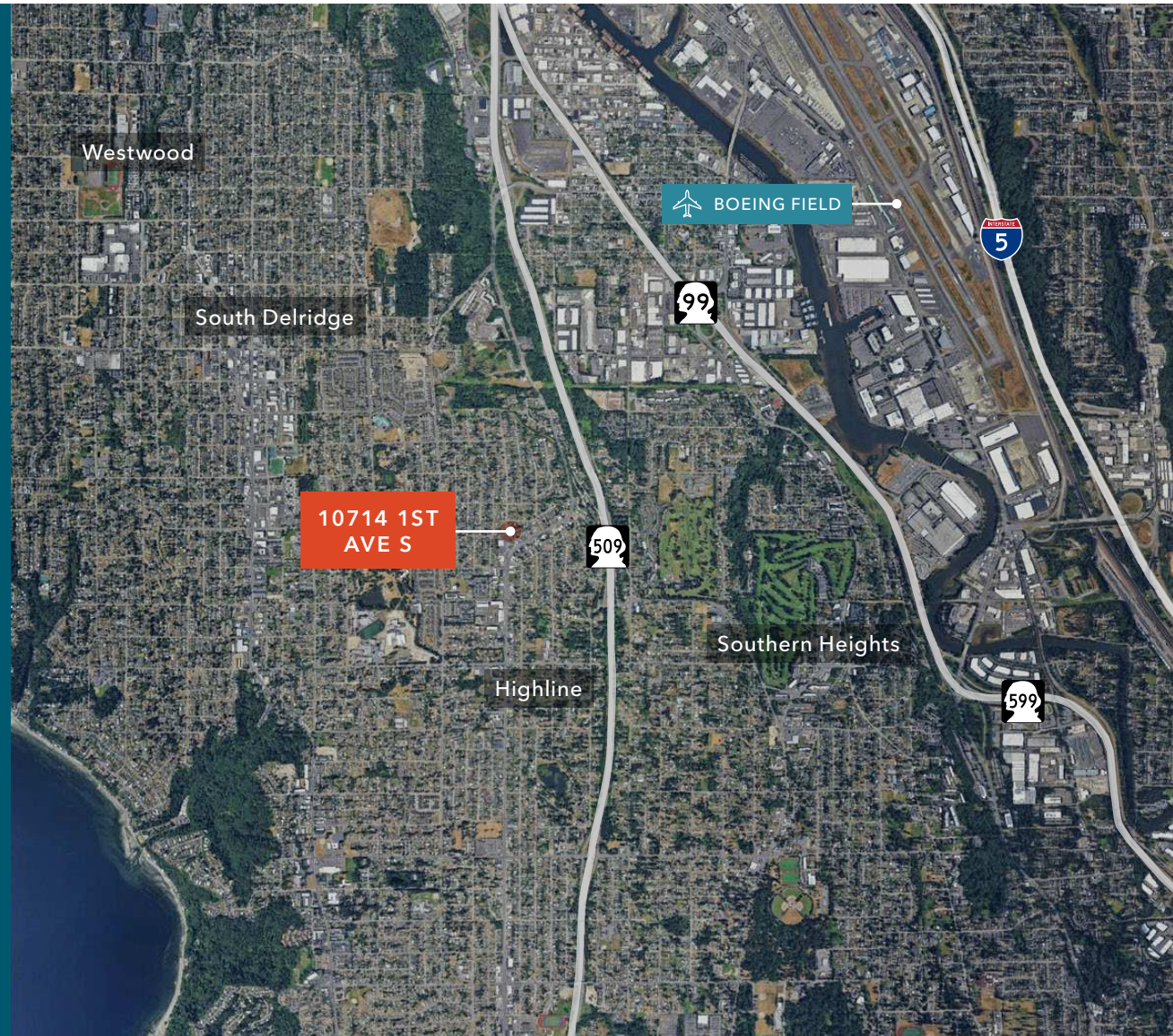
2 drive in doors - 10'x10'

Standalone building

\$1,150,000 sale price

**10'**  
CLEAR HEIGHT

**6,600 SF**  
LAND AREA



[KIDDER.COM](https://www.kidder.com)

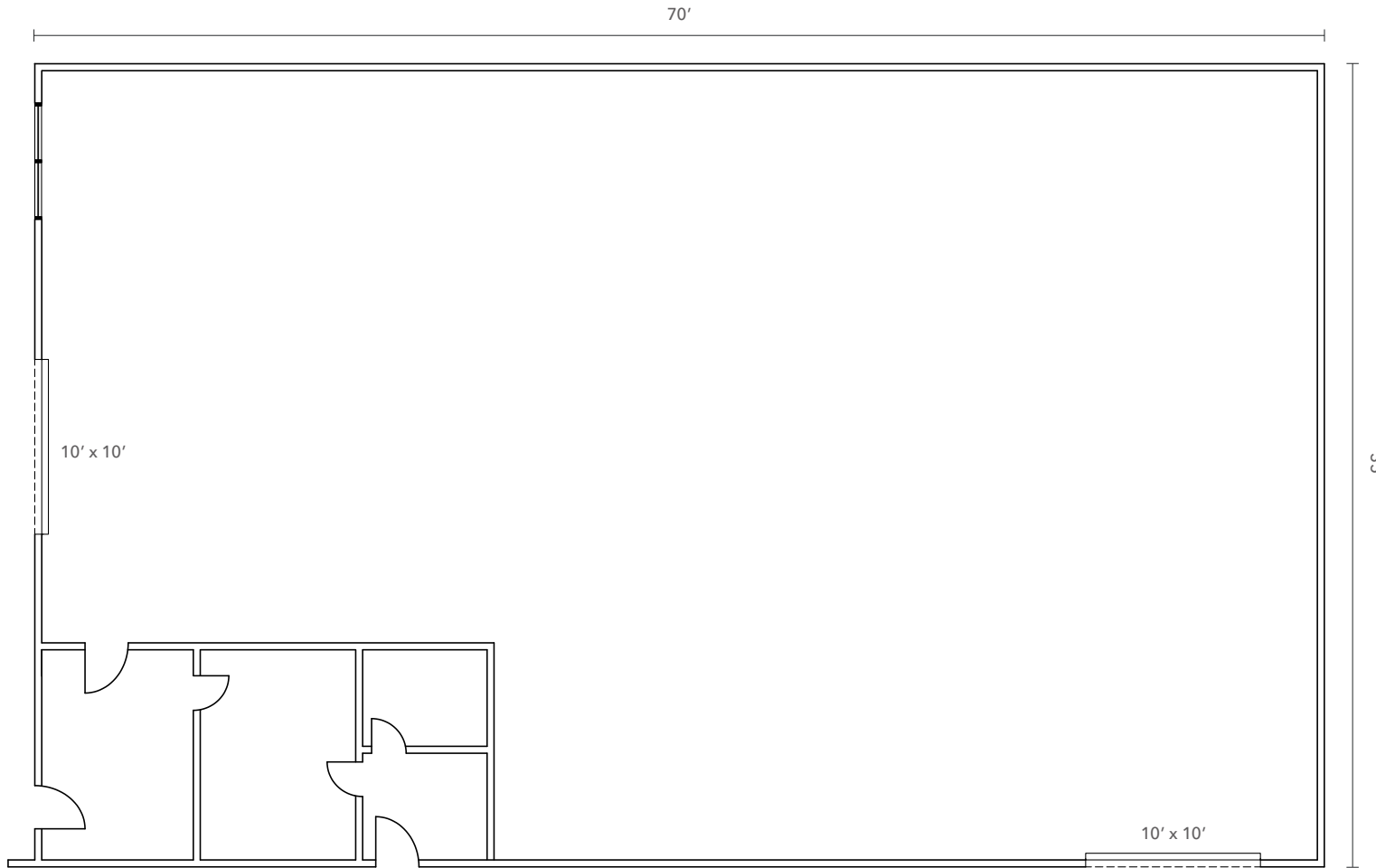
This information supplied herein is from sources we deem reliable. It is provided without any representation, warranty, or guarantee, expressed or implied as to its accuracy. Prospective Buyer or Tenant should conduct an independent investigation and verification of all matters deemed to be material, including, but not limited to, statements of income and expenses. Consult your attorney, accountant, or other professional advisor. All Kidder Mathews designs are the sole property of Kidder Mathews. Branded materials and layouts are not authorized for use by any other firm or person.



# MAIN FLOOR PLAN

2,592 SF

TOTAL AREA



[KIDDER.COM](http://KIDDER.COM)

This information supplied herein is from sources we deem reliable. It is provided without any representation, warranty, or guarantee, expressed or implied as to its accuracy. Prospective Buyer or Tenant should conduct an independent investigation and verification of all matters deemed to be material, including, but not limited to, statements of income and expenses. Consult your attorney, accountant, or other professional advisor. All Kidder Mathews designs are the sole property of Kidder Mathews. Branded materials and layouts are not authorized for use by any other firm or person.



10714 1ST  
AVE S

---



*Exclusively listed by*

JIM KIDDER

206.248.7328

jim.kidder@kidder.com

KIDDER.COM

This information supplied herein is from sources we deem reliable. It is provided without any representation, warranty, or guarantee, expressed or implied as to its accuracy. Prospective Buyer or Tenant should conduct an independent investigation and verification of all matters deemed to be material, including, but not limited to, statements of income and expenses. Consult your attorney, accountant, or other professional advisor. All Kidder Mathews designs are the sole property of Kidder Mathews. Branded materials and layouts are not authorized for use by any other firm or person.

**km** Kidder  
Mathews