



MULTIFAMILY/RETAIL/INDUSTRIAL
DEVELOPMENT LAND

1625 E. Bentley Dr., 1021 & 1080 S. Truss Pl.
Meridian, ID 83642

NAISelect



PROPERTY INFORMATION

PROPERTY TYPE	Multifamily
SALE PRICE	\$1,650,000
ADDRESS	1625 E. Bentley Dr., 1021 & 1080 S. Truss Pl. Meridian, ID 83642
LOT SIZE	±2.5 Acres

HIGHLIGHTS

- Recently rezoned commercial, allowing for a variety of development opportunities
- Multi-Family potential with conditional use permit (CUP)
- Concept plans for 48 units including either four 12-plex buildings or two 24-plex buildings
- Strong student housing opportunity near Idaho College of Osteopathic Medicine (ICOM) and Idaho State University programs
- Alternative development concept for flex/office/industrial space similar to nearby projects along Locust Grove
- Strategic location near Locust Grove corridor with excellent regional access
- Growing Meridian submarket surrounded by expanding residential and institutional demand drivers
- Conceptual site plans available for both multifamily and flex development scenarios

This information was obtained from sources believed reliable but cannot be guaranteed and is subject to change at any time. Any opinions or estimates are used for example only.

208.229.6015 | mike@naiselect.com
MIKE ERKMANN, CCIM

208.229.6002 | ben@naiselect.com
BEN KNEADLER, CCIM

NAI SELECT | 5571 N. GLENWOOD ST., BOISE, ID 83714 | 208.229.2020





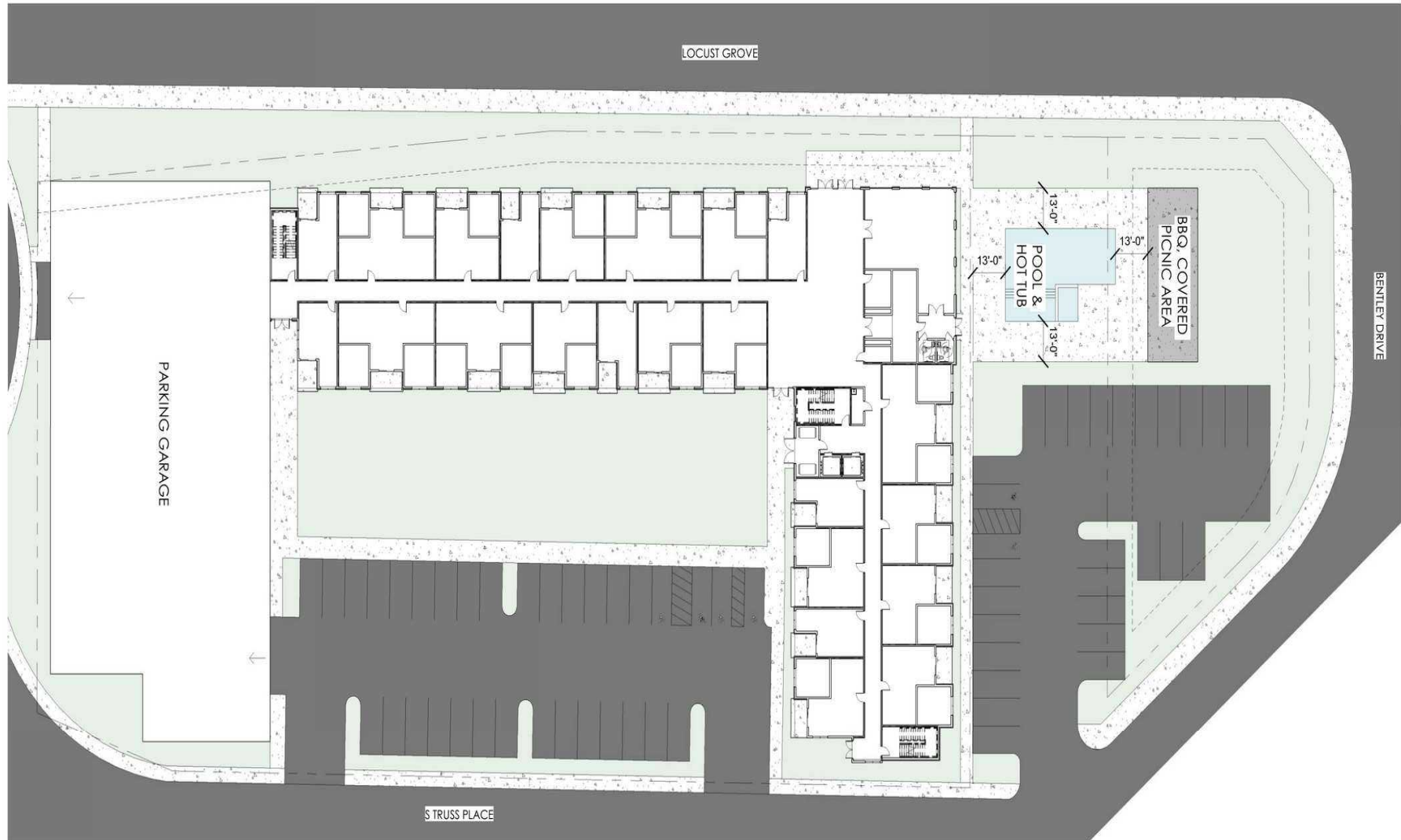
SITE PLAN
1-2-2017



SITE PLAN
1-2-2017

208.229.6015 | mike@naiselect.com
MIKE ERKMANN, CCIM

208.229.6002 | ben@naiselect.com
BEN KNEADLER, CCIM



208.229.6015 | mike@naiselect.com
MIKE ERKMANN, CCIM

208.229.6002 | ben@naiselect.com
BEN KNEADLER, CCIM



1 LOCUST GROVE ENTRANCE



2 PARKING LOT ENTRANCE



3 SOUTHEAST CORNER



4 SOUTHWEST CORNER

Multi-Opportunity Development Land

MERIDIAN, ID

Aerial



208.229.6015 | mike@naiselect.com
MIKE ERKMANN, CCIM

208.229.6002 | ben@naiselect.com
BEN KNEADLER, CCIM

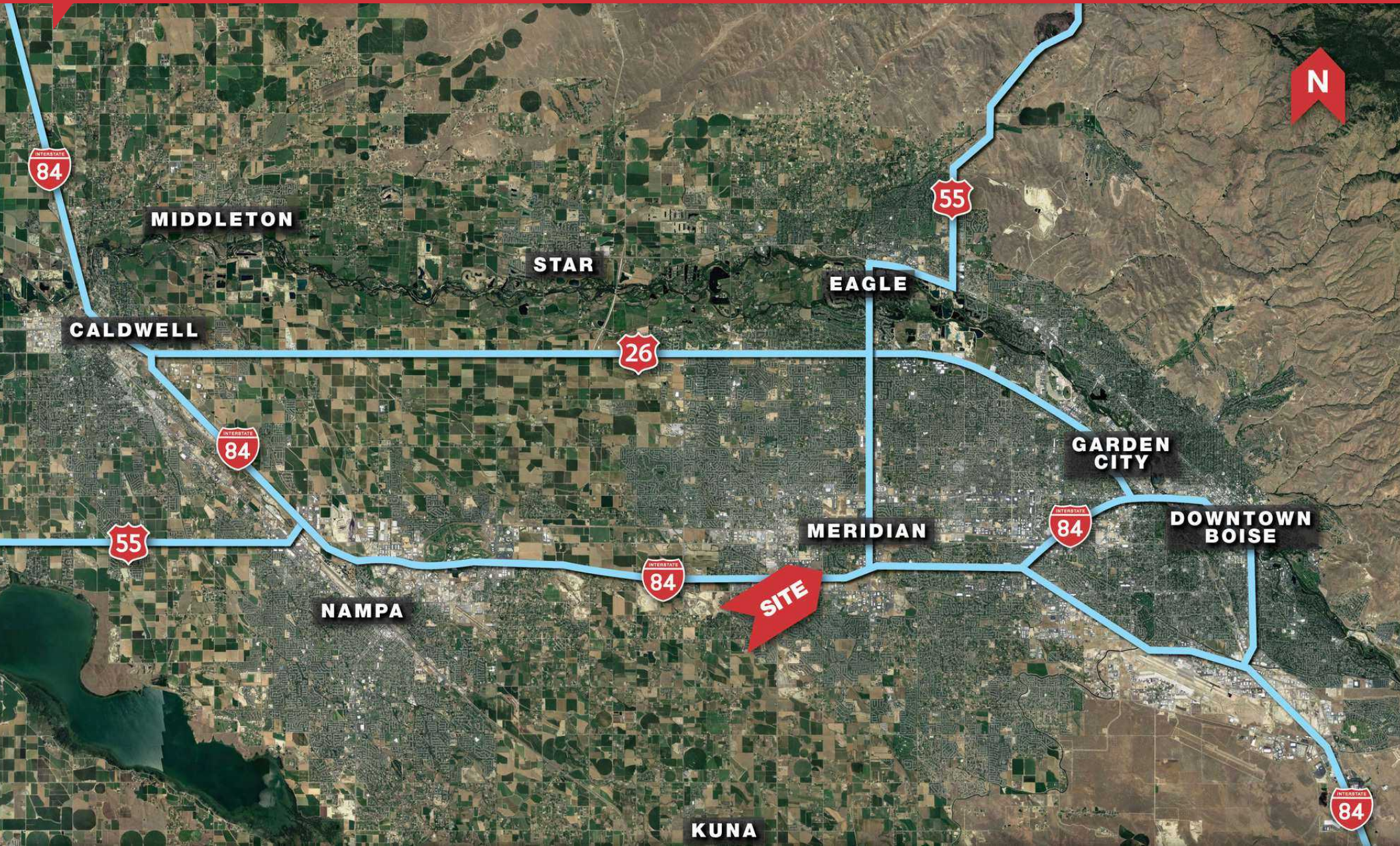
NAI SELECT | 5571 N. GLENWOOD ST., BOISE, ID 83714 | 208.229.2020

NAISelect



208.229.6015 | mike@naiselect.com
MIKE ERKMANN, CCIM

208.229.6002 | ben@naiselect.com
BEN KNEADLER, CCIM



208.229.6015 | mike@naiselect.com
MIKE ERKMANN, CCIM

208.229.6002 | ben@naiselect.com
BEN KNEADLER, CCIM