



First Western Properties | 425.822.5522
11621 97th Lane NE Kirkland, WA 98034 | fwp-inc.com

19121 HIGHWAY 2 | MONROE, WA

FOR SALE
ALFY'S PIZZA BUILDING

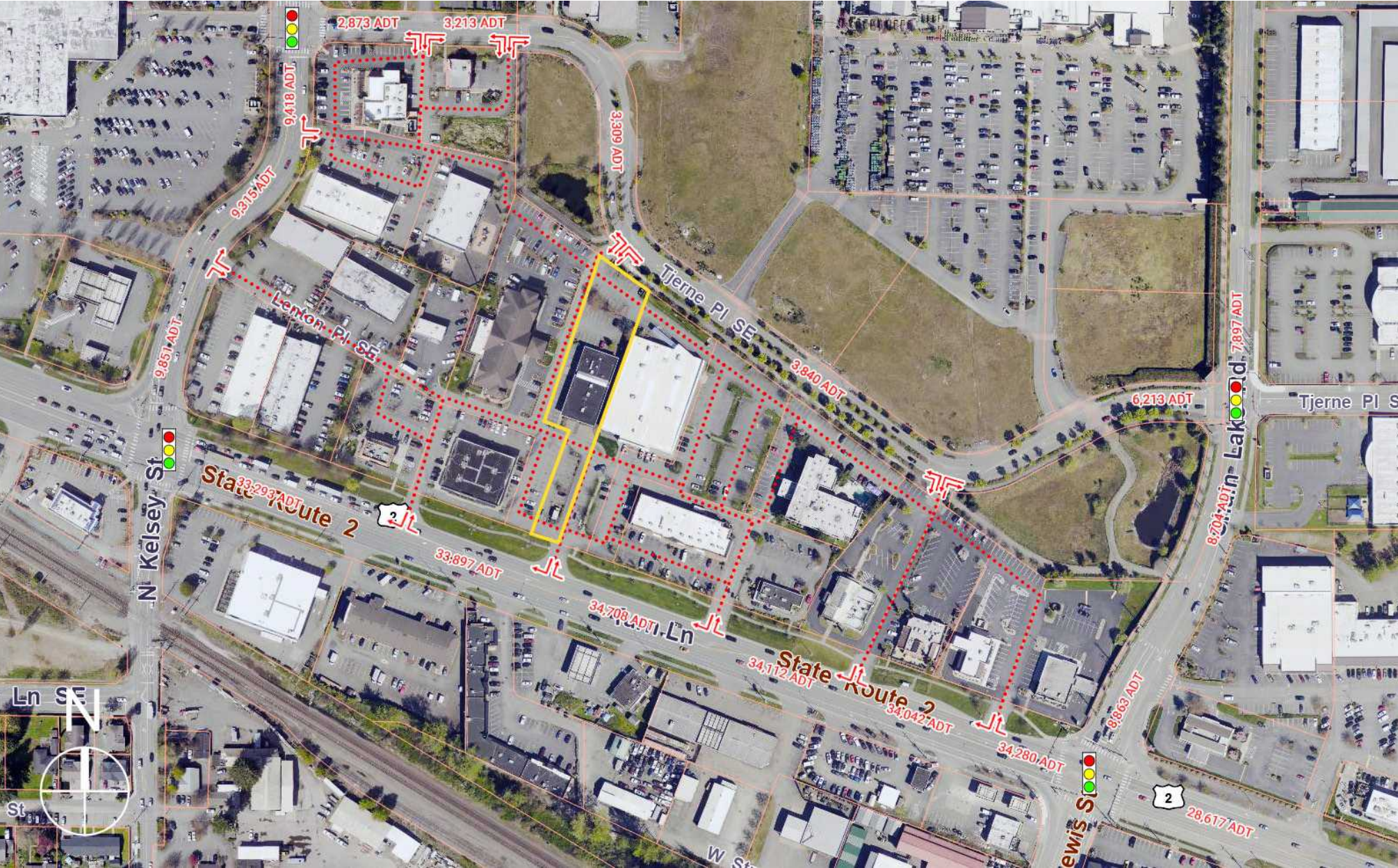
PROPERTY SUMMARY

The site is situated along the primary Hwy 2 corridor, a high-exposure gateway within one of Snohomish County's most resilient growth submarkets. Defined by excellent visibility and access, the location benefits from prominent pylon signage in a well-established commercial hub offers a rare opportunity to secure a site with proximity to Monroe's dense retail core and expanding residential base.

Building Use	Alfy's Pizza Restaurant
Address	19121 Highway 2
Total Land Area	43,124 SF (0.99 Acres)
Building Size	6,552 SF
Year Built	1998
Zoning	GC
Jurisdiction	City of Monroe
Parcel	00808900000502
Price	\$2,599,000



PROPERTY SUMMARY

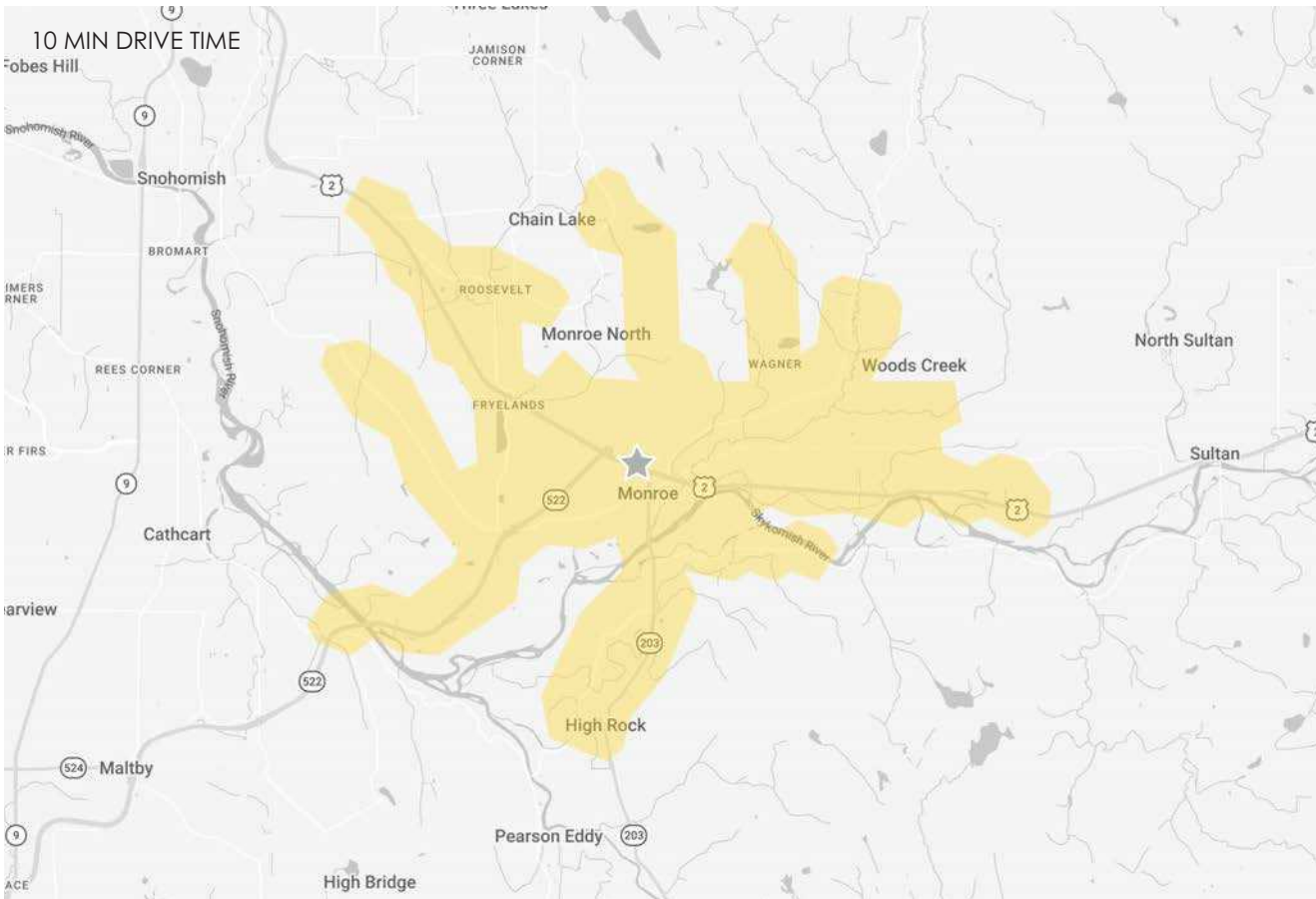


PROPERTY SUMMARY



DEMOGRAPHICS

MONROE, WA, serves as a vital inland crossroads where the Puget Sound lowlands meet the foothills of the Cascade Range. Located at the strategic junction of Highway 2 and Highway 522, Monroe has transformed from a historic agricultural and timber hub into a thriving regional destination and essential commuter gateway. The city's economy is anchored by a resilient mix of high-traffic retail centers, light manufacturing, and a growing healthcare sector, supported by its role as the home of the Evergreen State Fairgrounds. With its high-visibility commercial corridors and rapid residential expansion, Monroe offers a unique competitive advantage for businesses seeking to capture the consistent consumer momentum of the Skykomish Valley. Its blend of small-town heritage and modern economic vitality makes it a cornerstone of Snohomish County's eastern growth.



25,614

POPULATION
10 MIN DT



8,812

NO OF HOUSEHOLDS
10 MIN DT



\$151,496

AVERAGE HH INCOME
10 MIN DT



\$701,334

MEDIAN PROPERTY VALUE
10 MIN DT



37.3

YEARS OLD
MEDIAN AGE



\$581.99M

TOTAL NON-RETAIL
EXPENDITURE



16,381

DAYTIME ADJ. POPULATION
10 MIN DT



33,982

IS HIGHWAY 2
ADT





RELATIONSHIP FOCUSED. RESULTS DRIVEN.

KIRKLAND | TACOMA | PORTLAND | SEATTLE

Brennan McClurg
+1 425.822.5522
bmccclurg@fwp-inc.com

Kyle Nordby
+1 425.250.3287
kyle@fwp-inc.com

First Western Properties | 425.822.5522 | 11621 97th Lane NE Kirkland, WA 98034 | fwp-inc.com

© First Western Properties, Inc. DISCLAIMER: The above information has been secured from sources believed to be reliable, however, no representations are made to its accuracy. Prospective tenants or buyers should consult their professional advisors and conduct their own independent investigation. Properties are subject to change in price and/or availability without notice.