

3+ Acre Development Opportunity

Premier Corner Parcel Near Meridian & Hwy. 512



TERHUNE RAY
PROPERTIES



3.04 acres near Meridian commercial hub

Zoned for Limited Mixed Use (LMX)

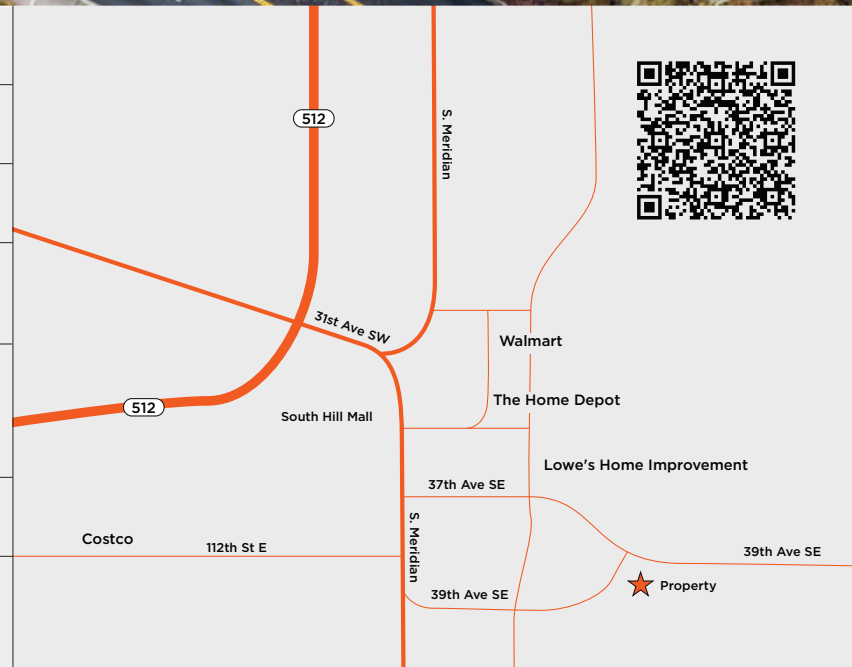
Highly visible corner location with level topography

Ideal for multi-story residential, professional office space and stand-alone retail up to 50,000 sq. ft.

Urban Center Mixed Use (UCX) zoning has been proposed, which may increase unit density and commercial options significantly.*

\$2,000,000

810 39th Ave. SE Puyallup, WA 98374
NWMLS #2464103



Jacob Ray
(253) 389-2497
Jacob@TerhuneRay.com

Presented by TerraFin RE
www.TerraFinRE.com

Robert Terhune
(253) 561-1569
Robert@TerhuneRay.com

The Seller reserves the right to modify maps, specifications and price without notice. Renderings are artists' conceptions and may not be to scale. Measurements are approximate and should be independently verified by buyer(s). Seller does not guarantee future rezoning. See agent for further details.

