

MAVERICKS BUILDING

200 E 1st St, Cle Elum, WA 98922



9,000 SF Available

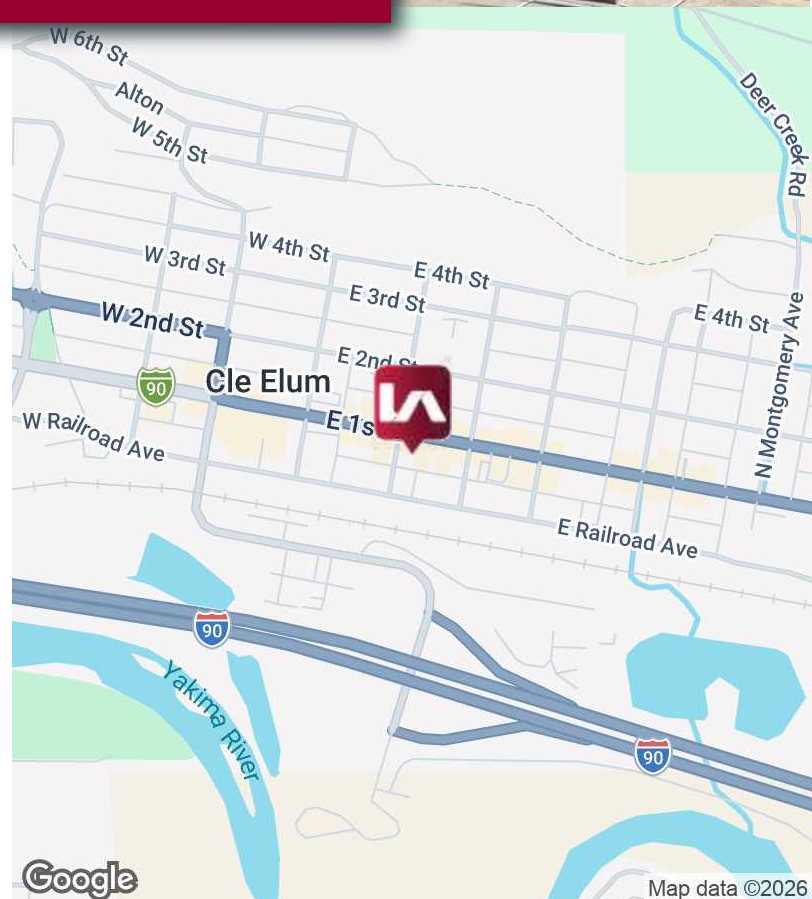
LISTING INFORMATION

ADDRESS:	200 E 1st St, Cle Elum WA
AVAILABLE SF:	9,000 SF
DATE AVAILABLE:	Now
LEASE RATE:	\$18 SF/Yr (NNN)

COMMENTS

200 E First Street offers a prime opportunity to acquire a well-located commercial property in the heart of Cle Elum. The building provides approximately 9,000sf of flexible Downtown Commercial (DC) zoned space suitable for retail, restaurants, bars, office and medical, personal services, hospitality, and entertainment uses, as well as financial institutions, breweries/wineries, and select civic or cultural uses.

The property features strong visibility, prominent street frontage, and convenient access for both customers and tenants. Its central location and versatile layout make it an attractive option for tenants seeking to capitalize on the area's continued growth.



MAVERICKS BUILDING

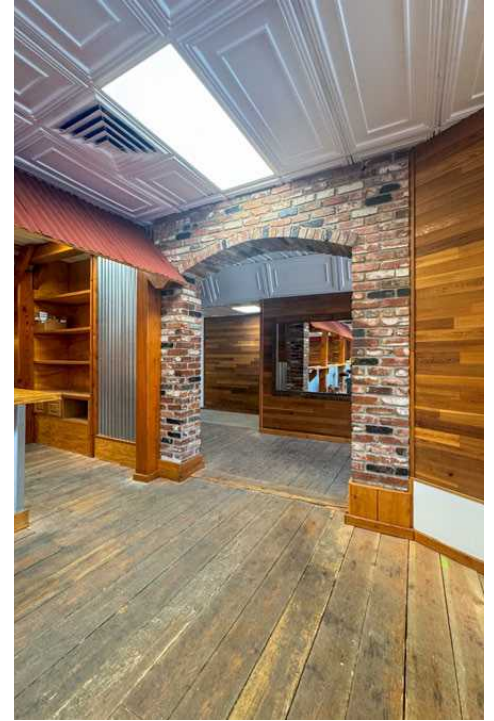
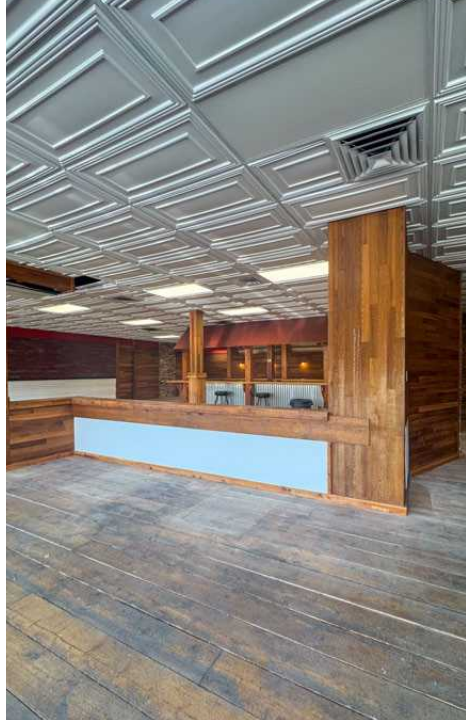
200 E 1st St, Cle Elum, WA 98922



LEE &
ASSOCIATES

COMMERCIAL REAL ESTATE SERVICES

PHOTOS



CONTACT

Amanda Hahnemann, CCIM

206.773.2691

ahahnemann@lee-associates.com

We obtained the information above from sources we believe to be reliable. However, we have not verified its accuracy and make no guarantee, warranty or representation about it. It is submitted subject to the possibility of errors, omissions, change of price, rental or other conditions, prior sale, lease or financing, or withdrawal without notice. We include projections, opinions, assumptions or estimates for example only, and they may not represent current or future performance of the property. You and your tax and legal advisors should conduct your own investigation of the property and transaction.

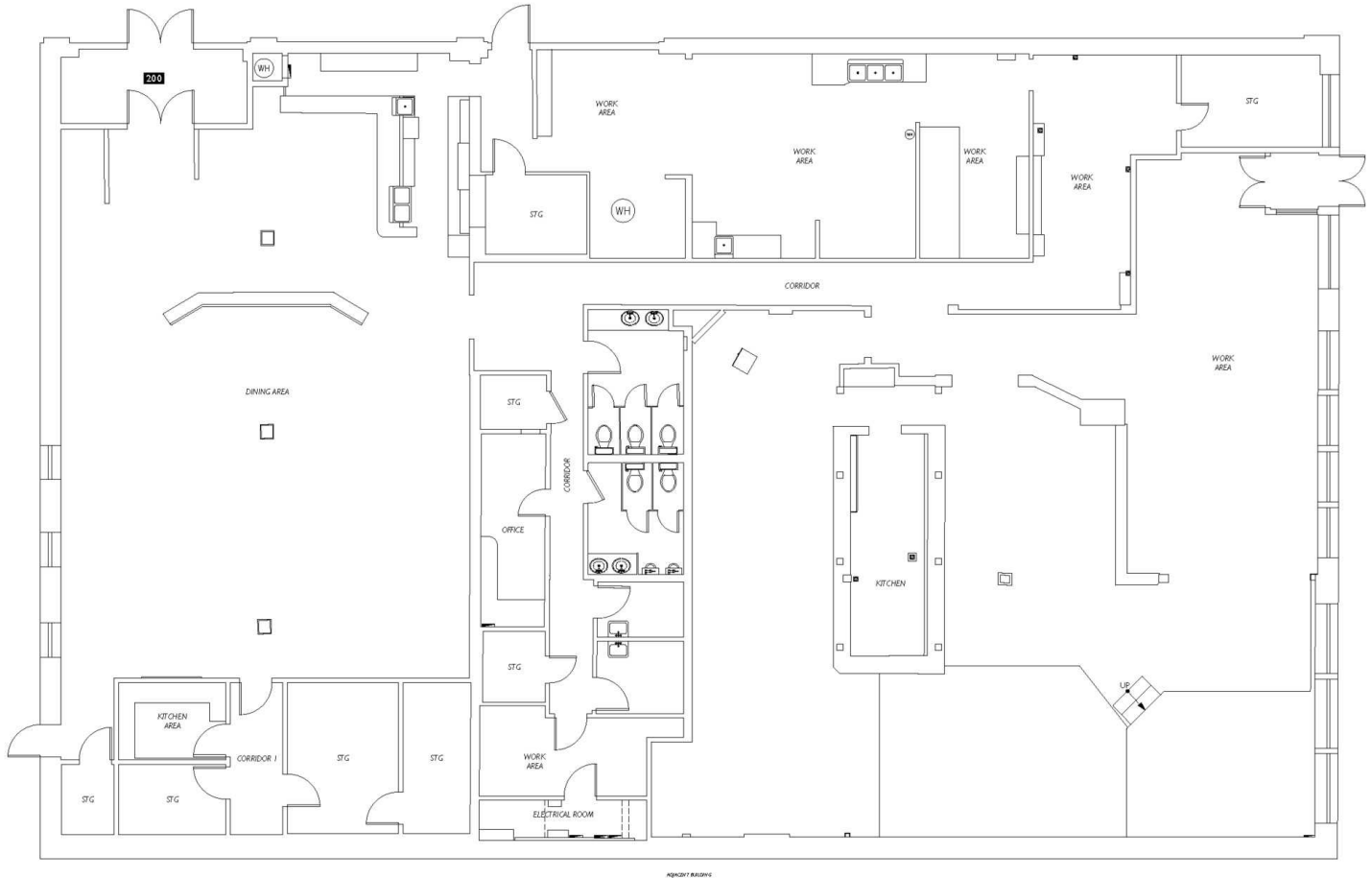
MAVERICKS BUILDING

200 E 1st St, Cle Elum, WA 98922



COMMERCIAL REAL ESTATE SERVICES

FLOOR PLAN



CONTACT

Amanda Hahnemann, CCIM

206.773.2691

ahahnemann@lee-associates.com

We obtained the information above from sources we believe to be reliable. However, we have not verified its accuracy and make no guarantee, warranty or representation about it. It is submitted subject to the possibility of errors, omissions, change of price, rental or other conditions, prior sale, lease or financing, or withdrawal without notice. We include projections, opinions, assumptions or estimates for example only, and they may not represent current or future performance of the property. You and your tax and legal advisors should conduct your own investigation of the property and transaction.

MAVERICKS BUILDING

200 E 1st St, Cle Elum, WA 98922



COMMERCIAL REAL ESTATE SERVICES



CONTACT

Amanda Hahnemann, CCIM

206.773.2691

ahahnemann@lee-associates.com

We obtained the information above from sources we believe to be reliable. However, we have not verified its accuracy and make no guarantee, warranty or representation about it. It is submitted subject to the possibility of errors, omissions, change of price, rental or other conditions, prior sale, lease or financing, or withdrawal without notice. We include projections, opinions, assumptions or estimates for example only, and they may not represent current or future performance of the property. You and your tax and legal advisors should conduct your own investigation of the property and transaction.