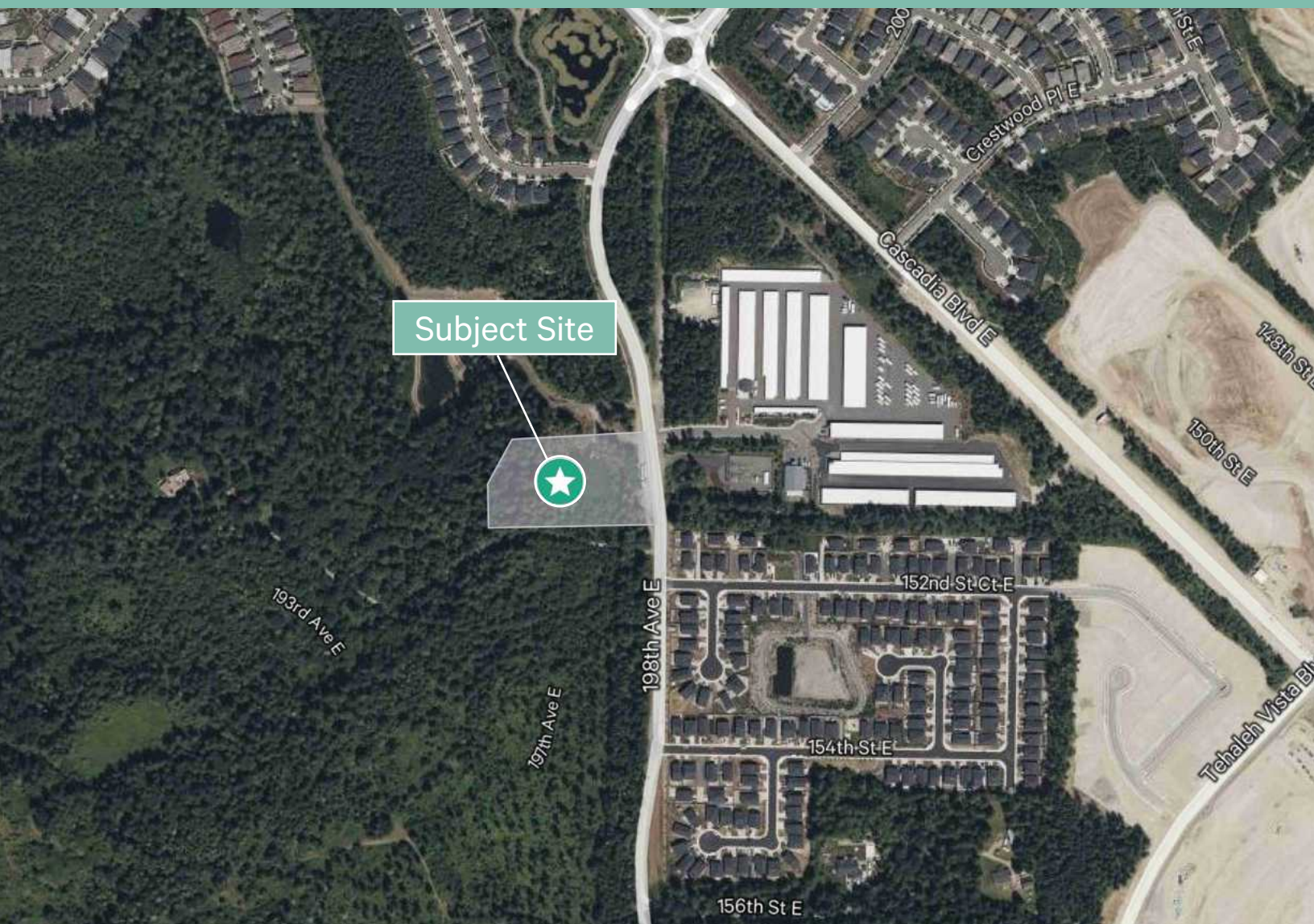


15155 198th Ave E

Bonney Lake, WA 98391

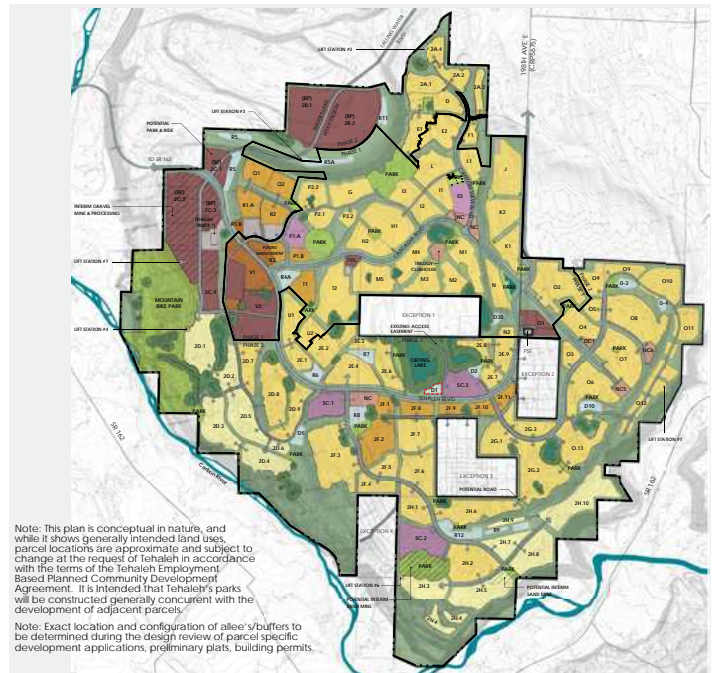
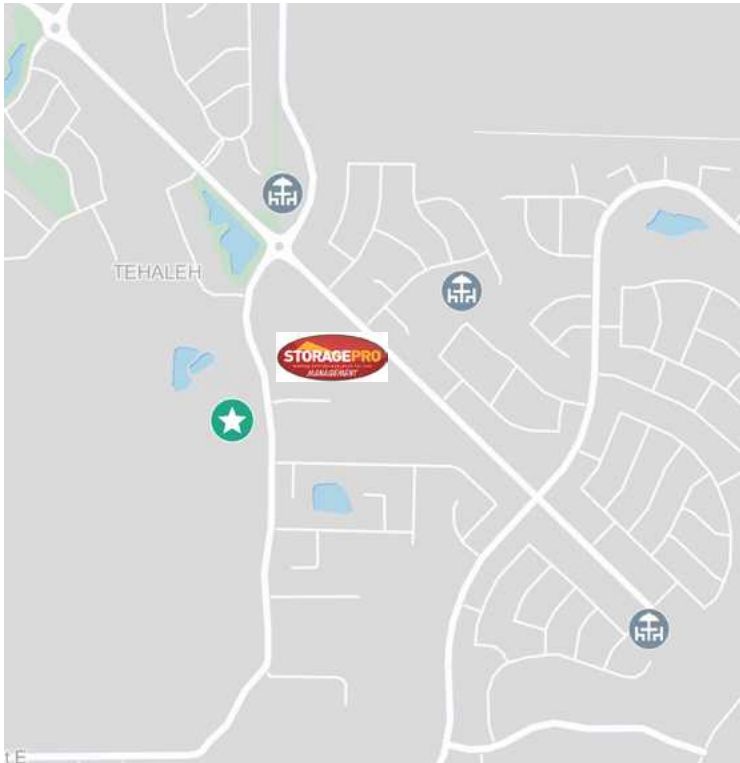
www.cbre.com/tacoma

Price: \$1,575,000



Property Information

- + Parcel #: 051921-5001
- + Acres: ±4.77 acres
- + Zoning: EBPC Master Plan, Tehaleh
- + Infrastructure: Sewer, water, electric available
- + Price: \$1,575,000



Note: This plan is conceptual in nature, and while it shows generally intended land uses, parcel locations are approximate and subject to change at the request of Tehaleh in accordance with the terms of the Tehaleh Employment Based Planned Community Development Agreement. It is intended that Tehaleh's parks will be constructed generally concurrent with the development of adjacent parcels.

Note: Exact location and configuration of allee's/buffers to be determined during the design review of parcel specific development applications, preliminary plats, building permits.

Legend:

- Cascadia EBPC Boundary
 - Phase Boundary
 - School District Boundary
- Land Use Classifications:
- Residential Designations / Zones
 - Residential (Detached)
 - Residential (Potential Multi-family)

- Development Designations / Zones
- BP - Business Park
 - CC - Community Center
 - NC - Neighborhood Center
- Public Facilities Designations / Zones
- Schools
 - Master Stormwater Drainage Facilities
 - Public Facilities

- Parks & Open Space Designations / Zones
- Community Parks
 - Wetlands
 - Buffers / Allees
 - Natural Open Space
- Future Employment Parcels
- These parcels may be designated as Business Park or Neighborhood Center if the applicant proposes these parcels for employment use & Pierce County approves this use in the future.

Contact Us

Teresa Patton
First Vice President
+1 206 963 1000
teresa.patton@cbre.com
Lic. 31830

CBRE
710 Market Street
Tacoma, WA 98402

© 2026 CBRE, Inc. All rights reserved. This information has been obtained from sources believed reliable, but has not been verified for accuracy or completeness. You should conduct a careful, independent investigation of the property and verify all information. Any reliance on this information is solely at your own risk. CBRE and the CBRE logo are service marks of CBRE, Inc. All other marks displayed on this document are the property of their respective owners, and the use of such logos does not imply any affiliation with or endorsement of CBRE. Photos herein are the property of their respective owners. Use of these images without the express written consent of the owner is prohibited. BSO 03.06.2026