

RETAIL/FLEX SUITE FOR LEASE



Images are for illustration purposes only

Offered at
\$1,000
Per Month, Modified Gross

AIN: 110057
Acres: 0.92
Zoned: CDA-C-17

Prime 1,000 sf Retail/Flex/Distribution Space – Coeur d’Alene, Idaho. Versatile multi-tenant building in an excellent Government Way location, just south of North 40 Outfitters, Great Floors and Home Depot —right in the heart of high-traffic commercial activity. Features a prominent large monument sign for great visibility, a strong mix of quality tenants, and easy access to Highway 95. Ideal for retail, office, showroom, light industrial, distribution, or flexible uses. Suite has roll-up door.



3700 N Government Way
Coeur d’Alene, ID 83815

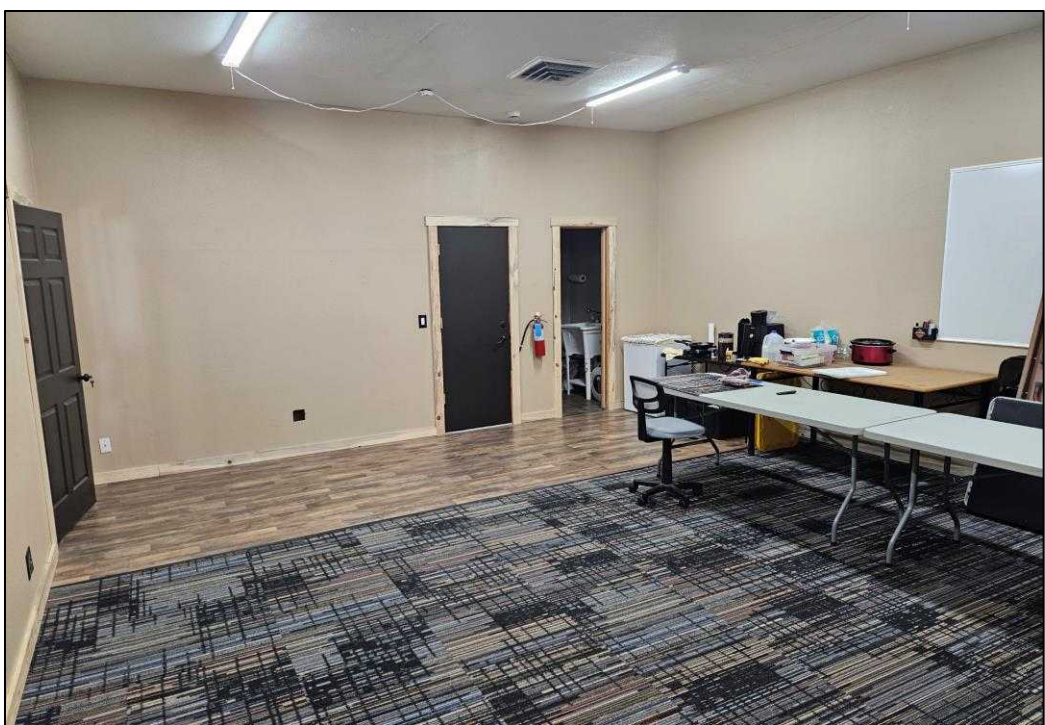
ROB KANNAPIEN, CCIM

208.704.3832
robk@ccim.net

VISIT
CCIMTEAM.COM



COLDWELL BANKER
COMMERCIAL



 3700 N Government Way
Coeur d'Alene, ID 83815

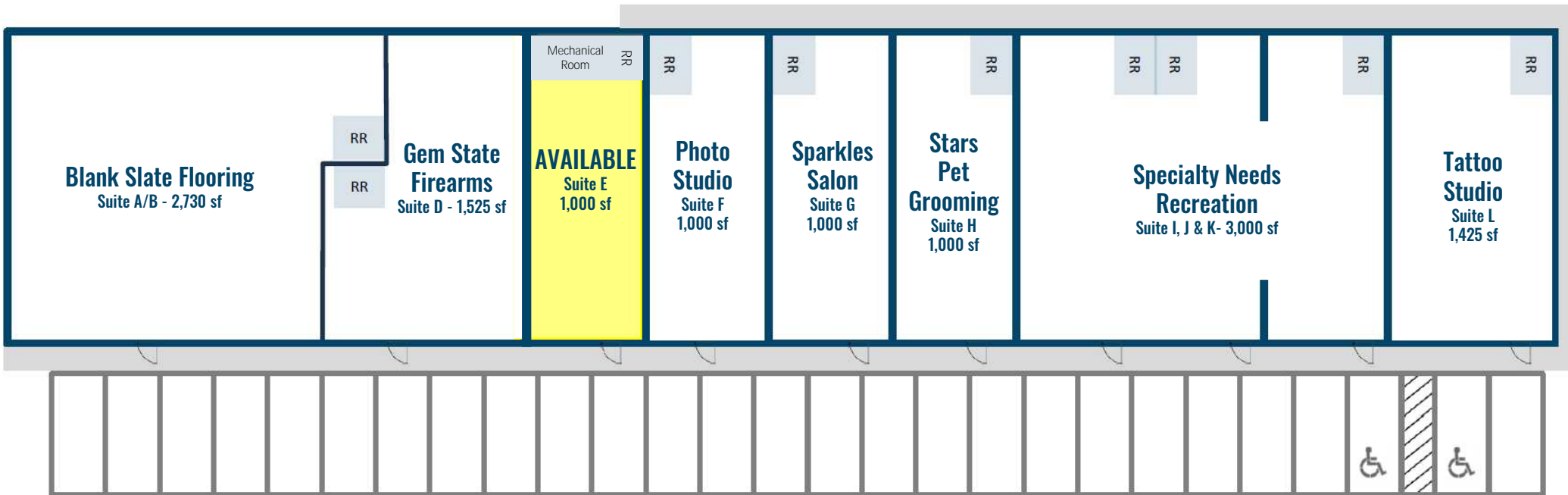
ROB KANNAPIEN, CCIM
208.704.3832
robk@ccim.net

VISIT
CCIMTEAM.COM

 **COLDWELL BANKER
COMMERCIAL**

FLOOR PLAN

Images or illustrations are for visual purposes only



3700 N Government Way
Coeur d'Alene, ID 83815

ROB KANNAPIEN, CCIM
208.704.3832
robk@ccim.net

VISIT
CCIMTEAM.COM

 **COLDWELL BANKER
COMMERCIAL**



GREAT FLOORS

AFFORDABLE BRIDAL
AUTOBODY SUPPLY
DJS COINS

GARNET CAFE

Government Way

Sunset Avenue

HOME DEPOT

ZIPS

CAR WASH

BARKAN HOUSE
JA BERTSCH
LE STUDIO
MCKEES UPHOLSTERY
NPS CABINETS
RECLAIMED BEAUTY
THEOS DETAIL GARAGE
TRUE NORTH BUILDERS

JA BERTSCH

SUNSET BOWLING

Images are for illustration purposes only



VIEW LOCATION



STREET VIEW

ROB KANNAPIEN, CCIM

208.704.3832
robk@ccim.net

VISIT
CCIMTEAM.COM



COLDWELL BANKER
COMMERCIAL

NEARBY BUSINESSES

Images or illustrations are for visual purposes only



3700 N Government Way
Coeur d'Alene, ID 83815

ROB KANNAPIEN, CCIM
208.704.3832
robk@ccim.net
CCIMTEAM.COM

Data is deemed reliable. No warranty or representation, expressed or implied, is made by Coldwell Banker Schneidmiller Realty, its agents or its employees as to the accuracy of the information contained herein. All information furnished is from sources deemed reliable and submitted subject to errors, omissions, change of terms and conditions, prior sale without notice, lease or financing, or withdrawal without notice. No one should rely solely on the above information, but instead should conduct their own investigation to satisfy themselves. All critical measurements shall be done by Lessee or Buyer. All Images are for illustration or visual purposes only.



SCHNEIDMILLER REALTY
2000 Northwest Blvd
Coeur d'Alene, ID 83814