

# FOR SALE



## CREATE LOTS. CAPTURE VALUE.

- \* 33± ACRES \* Seller Financing Options \*
- \* Adjoins Lake Stevens UGA \*

13420 12<sup>th</sup> Street NE  
Lake Stevens, WA 98258

Asking **\$3.5M**



*\* Boundaries are approximate*

More Info: <https://www.investmentnw.com/13420>



# Lake Stevens Development



**13420 12<sup>th</sup> St NE, Lake Stevens, WA 98258**

**32.61 ± acres**

## Table of Contents

---

<b>Description</b>	<b>3</b>
<b>Seller Financing Options</b>	<b>4</b>
<b>Location Overview</b>	<b>5-6</b>
<b>Site Aerial Overview</b>	<b>7</b>
<b>Survey</b>	<b>8</b>
<b>Topographic Map</b>	<b>9</b>
<b>Wetland Delineation</b>	<b>10</b>
<b>Zoning Map</b>	<b>11</b>
<b>Highlights &amp; Photos</b>	<b>12-14</b>
<b>Demographics</b>	<b>15-16</b>
<b>Housing Statistics</b>	<b>17</b>
<b>NE Building Site</b>	<b>18</b>

More Info: <https://www.investmentnw.com/13420>



# Lake Stevens Development



## Create Lots. Capture Value.

**33± acres of rolling terrain.** Open meadows. Stands of mature evergreens. Elevated ground captures sweeping views of the Cascades and Mount Baker. A true natural canvas for something exceptional.

Set along the edge of Lake Stevens, **this property invites vision.** Picture view lots across the upper ridgelines, with a luxury-leaning neighborhood. A thoughtfully designed community with trails, green belts, and a connection to the Centennial Trail at the east entrance. Quiet. Scenic. Desirable. This is the place that future homeowners seek out—and builders can proudly deliver.

Positioned for flexibility. **Over 1,500 feet adjoining city R6 zoning to the north and 450 feet against R4 on the west** along 131st Ave NE. Currently zoned **Snohomish County R-5.** Develop now as a rural cluster or plan for an annexation and increased density. Multiple paths. Real upside. Your design.

**Wetlands and survey complete.** Key steps handled. Time saved. Clarity gained. Access is established from Machias Rd across Catherine Creek or connect to city roads on the west. City services possible along the adjoining city boundaries, bringing infrastructure within reach as growth expands around Lake Stevens.

Whether land packagers, developers, or builders - this is a site that works on paper and in the field.

Create and capture value at scale. **Seller financing may be available** for experienced groups. **Extensive rental income** options on site with multiple structures, 2 units, & pasture. Adding flexibility to your structure and timing.

Opportunities like this don't sit. They move. Let's explore how this site can become your next successful project. **Call us to arrange your private tour.**

**Address:** 13420 12<sup>th</sup> St NE  
Lake Stevens, WA 98258

**Jurisdiction, Zoning:** Snohomish County, R-5

**Adjoining Parcels:** Lake Stevens UGA R6 & R4

**Parcel IDs:** 290616-002-014-00; 004-00;  
290616-002-006-00; & 013-00

**Residence & ADU:** 1,980± SF above; 1,356± SF below

**Outbuildings:** 100'x75' ± ; 20'x20' ±

**Lot Size:** 32.61 ± acres

More Info: <https://www.investmentnw.com/13420>





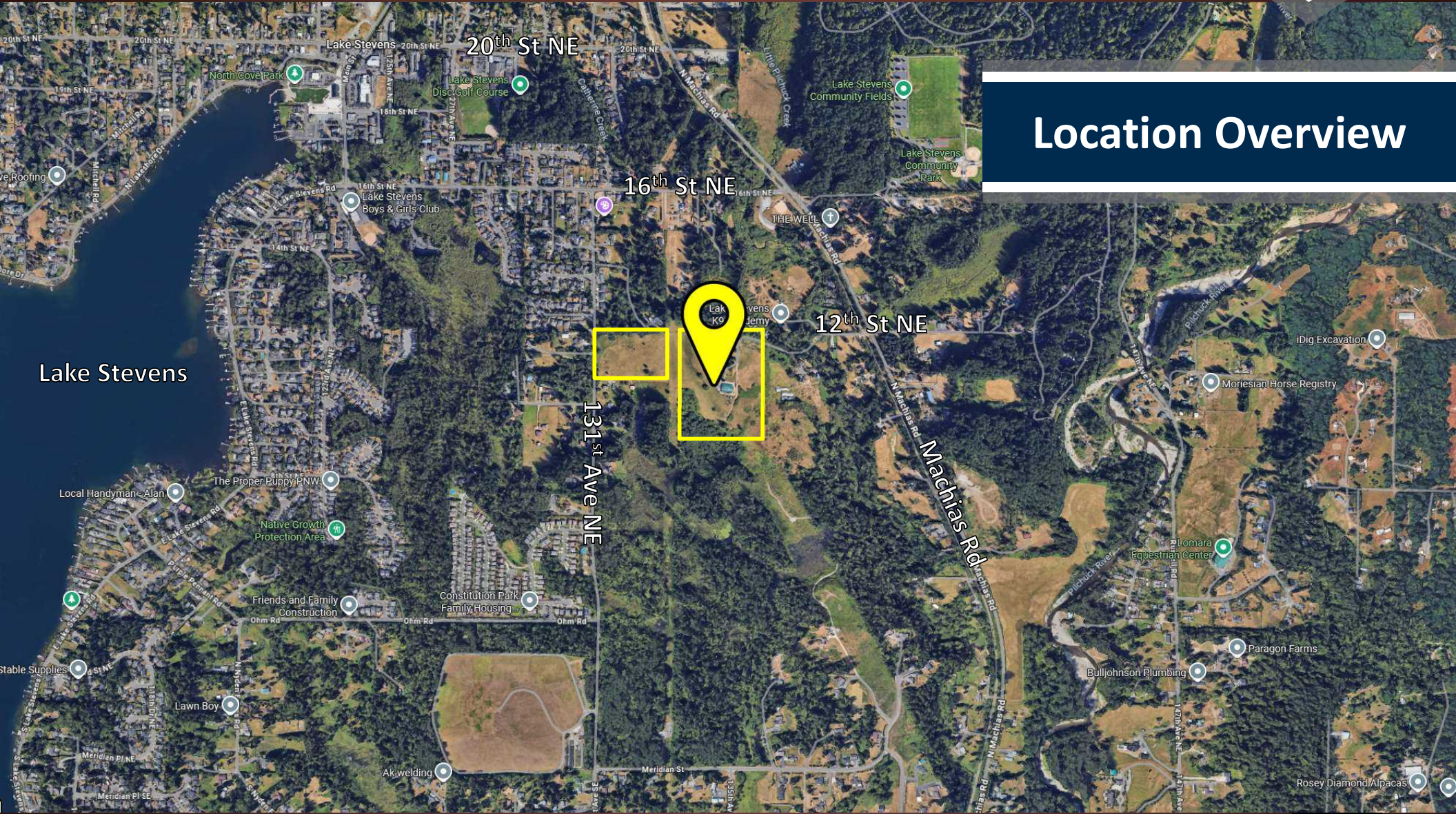
# LAKE STEVENS DEVELOPMENT

## Potential Seller Financing Options

Purchase Price	\$3,500,000
35% Down	\$1,225,000
Balance	\$2,275,000
Interest Rate	5.0%
Interest Only Payment	\$9,479
Balance Due In	72 Months

More Info: <https://www.investmentnw.com/13420>





# Location Overview

More Info: <https://www.investmentnw.com/13420>





# LAKE STEVENS DEVELOPMENT

**Prime Location**

**Easy Access**

**3.7<sub>±</sub> miles to Hwy 9**

**6.7<sub>±</sub> miles to Hwy 2**

**9.0<sub>±</sub> miles to I-5**



More Info: <https://www.investmentnw.com/13420>





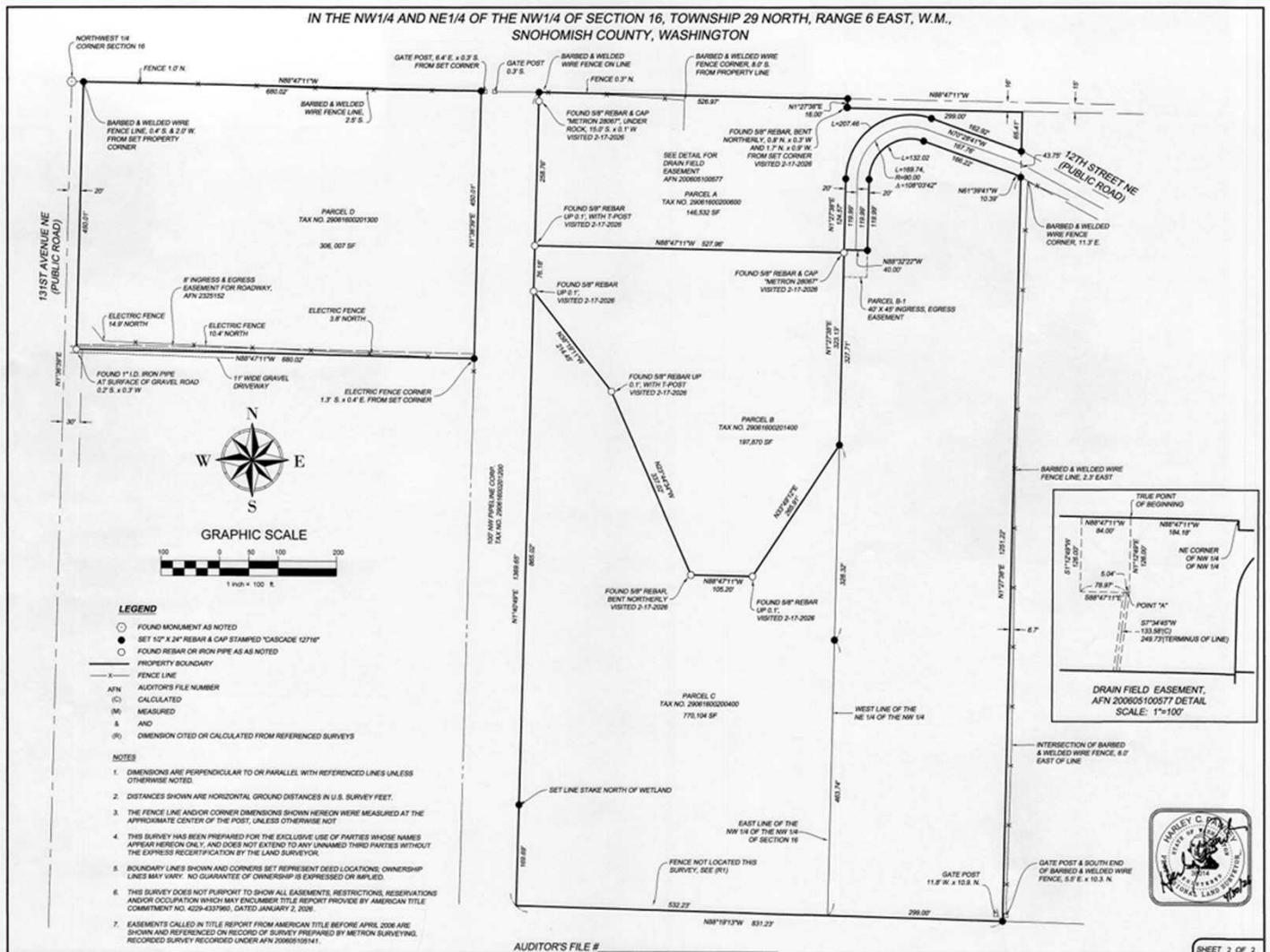
**Site Overview**

More Info: <https://www.investmentnw.com/13420>





# Survey Overview



PARCEL	LOT SF
Parcel A 290616-002-006-00	146,532 SF
Parcel B 290616-002-014-00	197,870 SF
Parcel C 290616-002-004-00	770,104 SF
Parcel D 290616-002-013-00	306,007 SF
<b>TOTAL</b>	<b>1,420,513 SF</b>

**CASCADE SURVEYING & ENGINEERING, INC.**



Engineers - Surveyors - Planners

105 E. Division St. - PO Box 326, Suite 1  
Arlington, Washington 98223  
www.cascadesurveying.com

(206) 889-0881  
Phone: (206) 456-8881  
Fax: (206) 456-4142  
kshel@cadet.cascadesurveying.com

IN THE NW1/4 AND NE1/4 OF THE NW1/4 OF SEC. 16, T. 29 N., R. 6 E., W.M.  
JOB# 24152 DRAWN BY AMEKG FIELD BOOK # SN 1047  
DATE 4/20/2016 REVISED: CHECKED BY: HCP

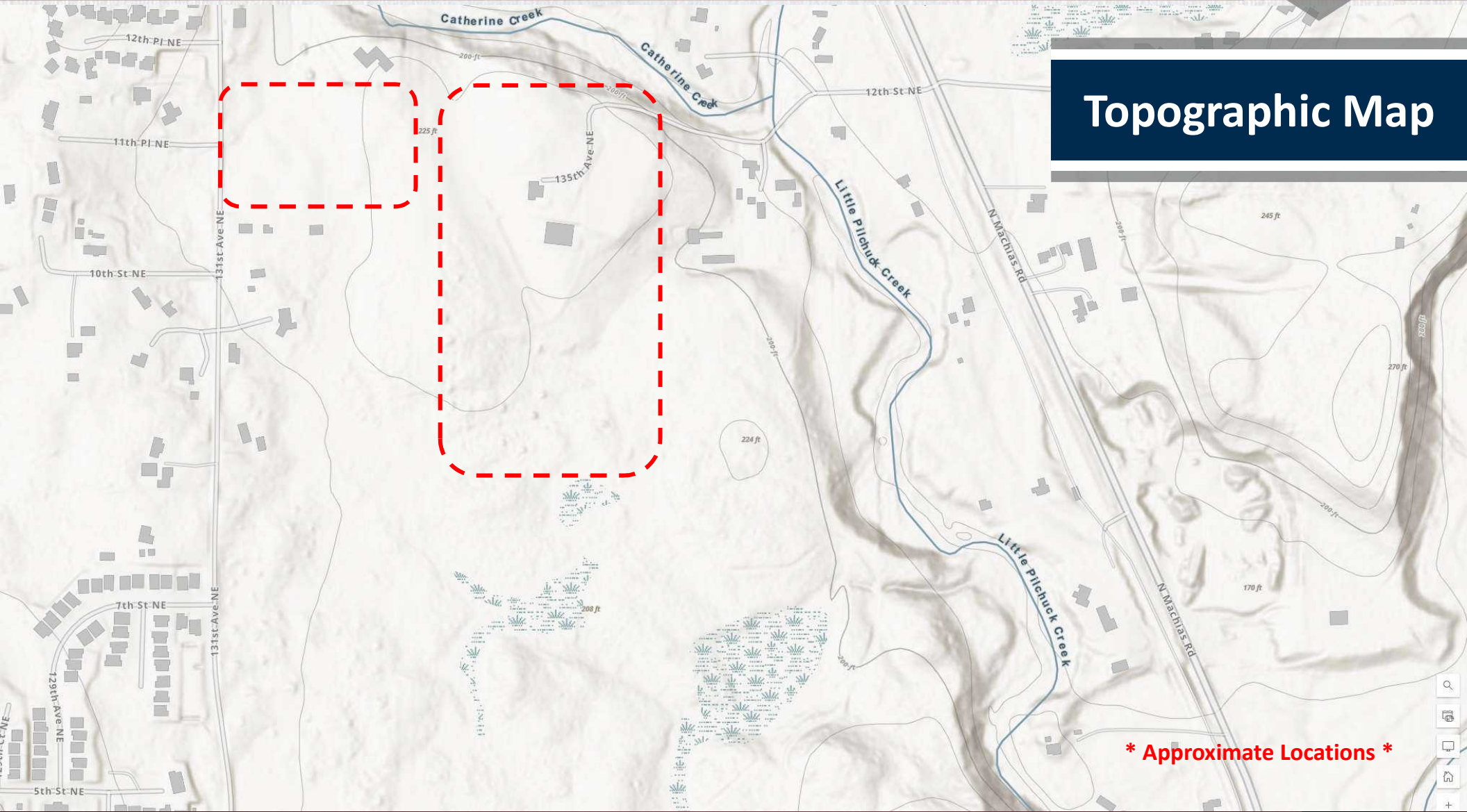


More Info: <https://www.investmentnw.com/13420>





# Topographic Map



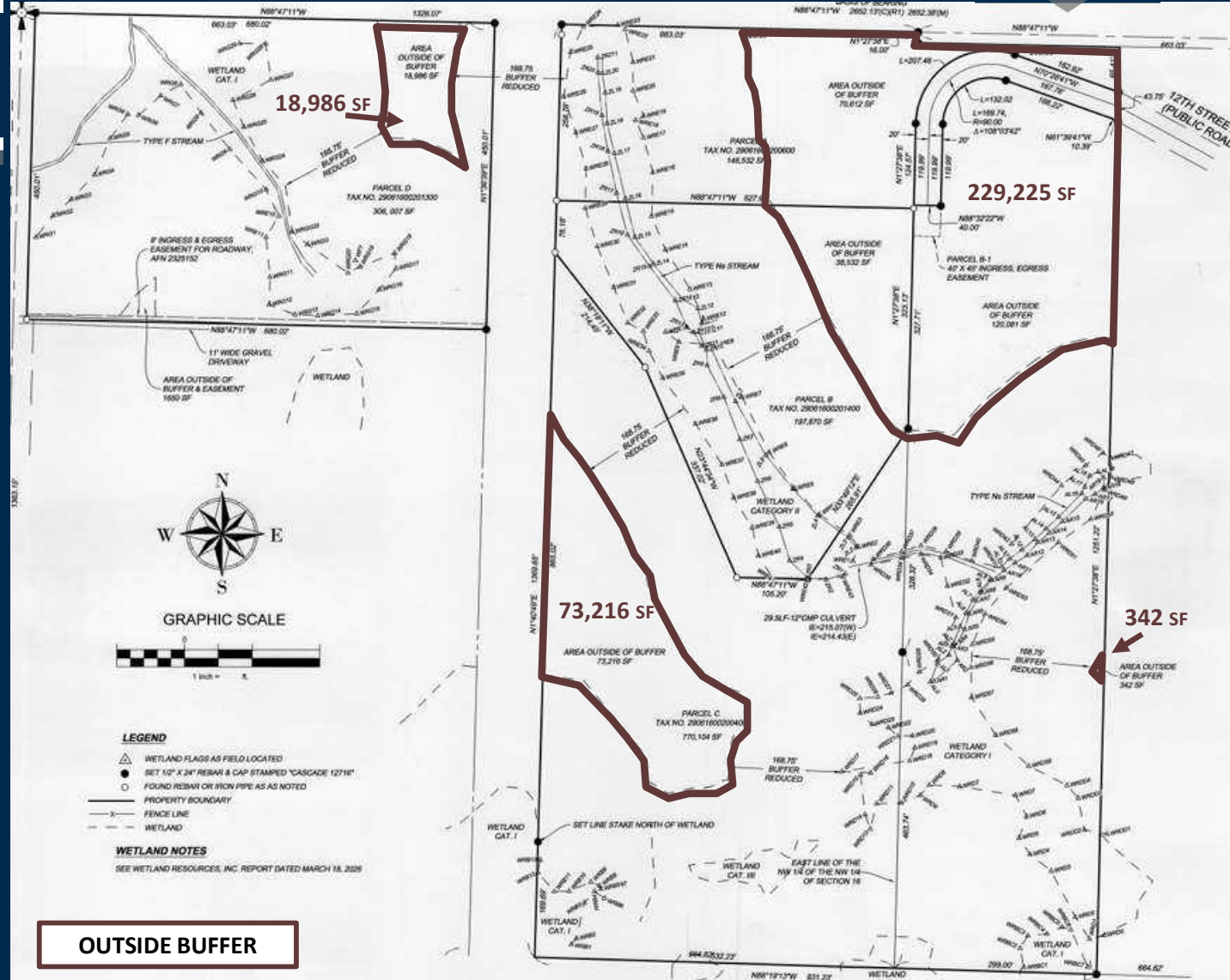
More Info: <https://www.investmentnw.com/13420>





# Wetland Overview

<u>PARCEL</u>	<u>OUTSIDE BUFFER</u>	<u>LOT SF</u>
Parcel A	70,612 SF	146,532 SF
Parcel B (NE)	120,081 SF	197,870 SF
Parcel B (SE)	342 SF	
Parcel C (NE)	38,532 SF	770,104 SF
Parcel C (SW)	73,216 SF	
Parcel D	18,986 SF	306,007 SF
<b>TOTAL SF</b>	<b>321,769 SF</b>	<b>1,420,513 SF</b>
<b>TOTAL AC</b>	<b>7.39 AC</b>	<b>32.61 AC</b>

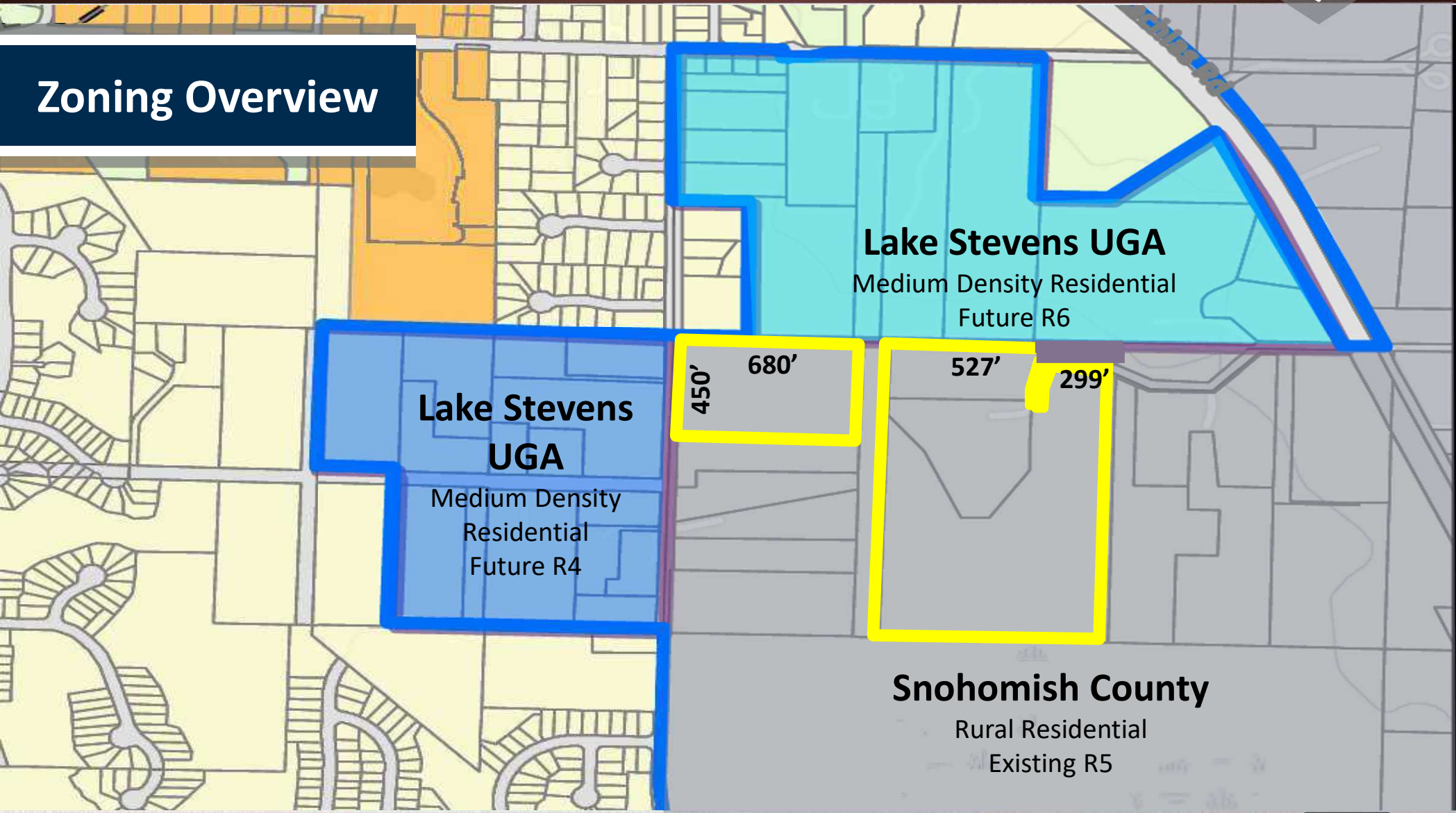


**OUTSIDE BUFFER**





# Zoning Overview



More Info: <https://www.investmentnw.com/13420>





# LAKE STEVENS FEATURES

**Main Home  
Attached ADU**

**Open 8 Bay Shop  
7500 ± SF  
Easily Re-Secured**

**400 ± SF Workshop**

**Fenced Pasture**



More Info: <https://www.investmentnw.com/13420>





# LAKE STEVENS DEVELOPMENT



More Info: <https://www.investmentnw.com/13420>





# LAKE STEVENS DEVELOPMENT



More Info: <https://www.investmentnw.com/13420>





## Demographics

	<u>1 Mile</u>	<u>3 Miles</u>	<u>5 Miles</u>
Population	3,903	37,060	80,873
Median Age	35.7	37.4	37.6
Avg. Household Size	3.0	2.9	3.0
Unemployment Rate	2.7%	2.9%	3.3%
Median Net Worth	\$361,737	\$556,323	\$588,977



More Info: <https://www.investmentnw.com/13420>





## Population by Generation

5 Mile

<b>GREATEST</b> Born Pre 1945	2.2%
<b>BOOMER</b> 1946-1964	15.4%
<b>GEN X</b> 1965-1980	20.1%
<b>MILLENNIAL</b> 1981-1998	26.4%
<b>GEN Z</b> 1999-2016	23.3%
<b>ALPHA</b> 2017-Present	12.5%

More Info: <https://www.investmentnw.com/13420>





## Housing Statistics

NWMLS – May 9, 2026

### 5 Miles

Average Beds/Baths	4 / 2.5
Average Square Feet	2,277
Low Sold	\$375,000
Average Sold	\$809,000
High Sold	\$5,250,000

# Sold Past 12 Months	891
# Active	186
# Pending	117
Months Inventory	2.5
Median Days on Market	46

## Housing by Year Built

### 5 Mile

Pre 1939	4.5%
1940-49	1.0%
1950-59	2.2%
1960-69	7.1%
1970-79	10.6%
1980-89	11.5%
1990-99	21.9%
2000-09	23.4%
2010-19	13.7%
2020+	4.1%

More Info: <https://www.investmentnw.com/13420>





## NE Building Site



More Info: <https://www.investmentnw.com/13420>





Presented By:

The Hudson Group LLC  
Windermere Real Estate/M2, LLC

Jen Hudson, CCIM  
(206) 293-1005  
jen@hudsonreg.com

Duane Petzoldt  
(425) 239-1780  
duane@hudsonreg.com

[WWW.HUDSONREG.COM](http://WWW.HUDSONREG.COM)