

FOR SALE | HIGH VISIBILITY RETAIL/OFFICE BUILDING IN TUMWATER



510 CUSTER WAY, TUMWATER, WA 98501

## PROPERTY OVERVIEW

Located in Tumwater's revitalized Special Brewery District, this 5,244 square foot commercial property offers an excellent opportunity for investors or owner/users. The 0.28-acre parcel is entirely outside flood zones. The modern building features strong curb appeal and high-visibility frontage on Custer Way. Its flexible layout supports multiple units or suites, making it ideal for both retail and professional office uses.

The site offers 9,710 square feet of asphalt paving, convenient vehicle access, and 23 surface parking stalls at the rear of the building. With modern construction in a growing commercial corridor, this property represents a secure investment for those seeking high visibility in a desirable area.

Parcel: 84900201200

**BUILDING SIZE: 5,244 SF**

**LAND: 0.28AC (12,197 SF)**

**SALE PRICE: \$999,000**

**CBA # 44980268**



[greene.properties/510CusterWay\\_VT](https://greene.properties/510CusterWay_VT)



**Quint Newell**  
COMMERCIAL BROKER

360.688.8333

[quintn@greenecommercial.com](mailto:quintn@greenecommercial.com)

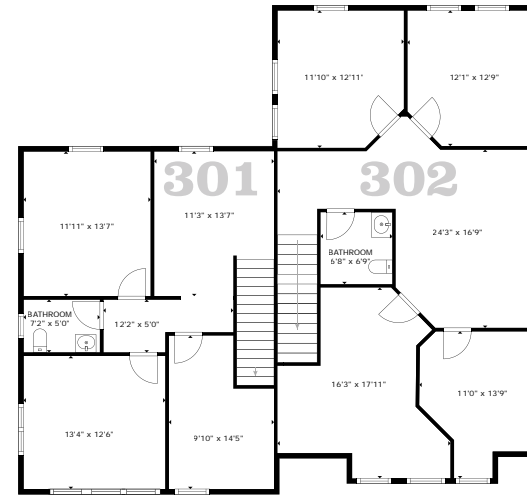
Information provided is from sources deemed reliable but is not guaranteed and is subject to errors, omissions, change of price, or withdrawal without notice. All projections, square footages, and property lines are approximate, provided for illustrative marketing purposes only, and do not constitute a certified appraisal or legal survey (RCW 18.43). Prospective buyers and tenants must independently verify all boundaries, dimensions, and property data with licensed professionals. Greene Commercial assumes no liability for the accuracy of these depictions.



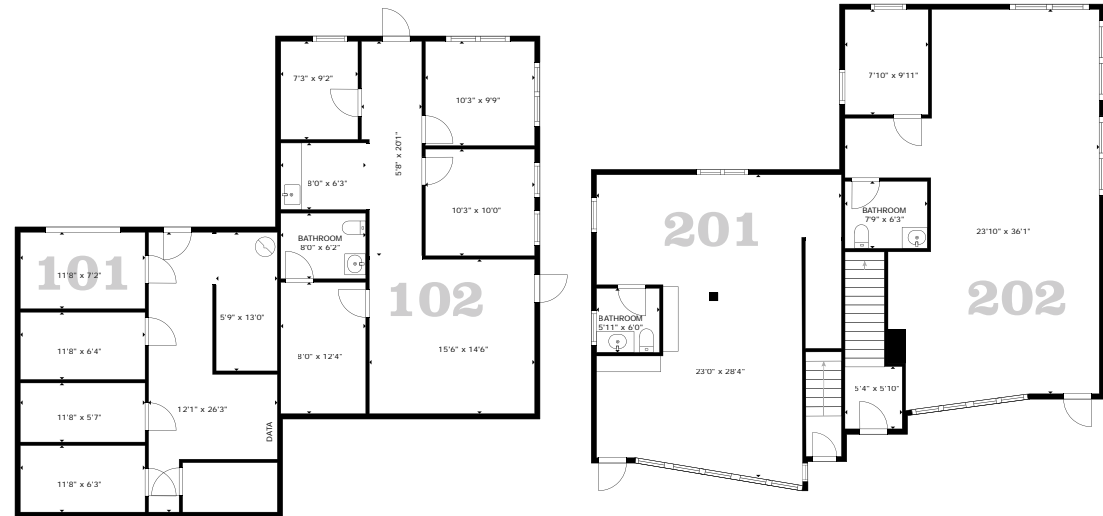
**GREENE**  
COMMERCIAL

360.528.4167

[greenecommercial.com](https://greenecommercial.com)



THIRD FLOOR



FIRST FLOOR

SECOND FLOOR



THIS FLOORPLAN IS NOT TO SCALE

**Quint Newell**  
 COMMERCIAL BROKER  
 360.688.8333  
 quintn@greenecommercial.com

## DEMOGRAPHIC SUMMARY

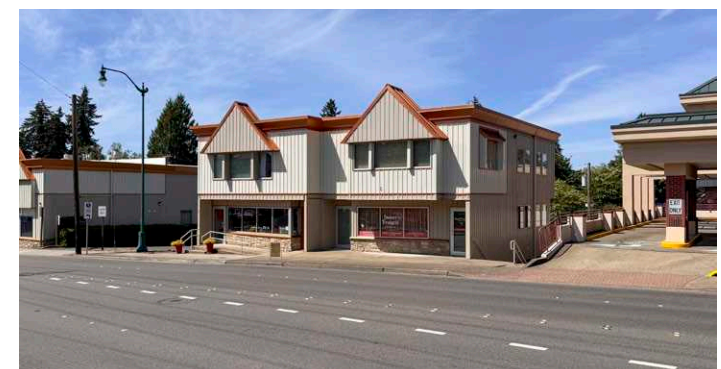
The area surrounding 510 Custer Way features high income levels, low vacancy rates, and a predominantly skilled, white-collar workforce. These factors support long-term viability for the building's retail and office spaces.

## CORE METRICS

	1 MILE	3 MILE	5 MILE
<b>POPULATION</b>	27,303	103,337	184,318
<b>MEDIAN HH INCOME</b>	\$89,833	\$88,824	\$94,438
<b>MEDIAN AGE</b>	38.0	39.9	40.1
<b>EMPLOYMENT BASE</b>	23,158	86,297	152,177

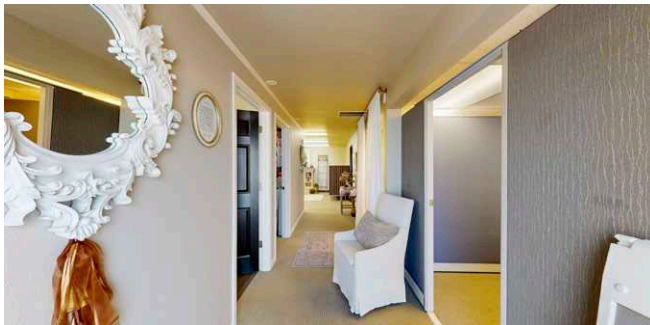
## NEIGHBORHOOD PROFILE

Tumwater's Brewery District is a lively area for both businesses and residents, built around the historic Olympia Brewing Company on the Deschutes River. The city has changed the zoning to turn this former industrial spot into a walkable neighborhood that honors the area's brewing history. With projects like the Tumwater Craft District, the neighborhood is quickly becoming a popular place for shopping, dining, and enjoying craft drinks.



**Quint Newell**  
 COMMERCIAL BROKER  
 360.688.8333  
 quintn@greenecommercial.com

**FIRST FLOOR: 101 & 102**



**SECOND FLOOR: 201 & 202**



**THIRD FLOOR: 301 & 302**



**Quint Newell**  
COMMERCIAL BROKER  
360.688.8333  
quintn@greenecommercial.com