

TOK

COMMERCIAL

5963 EMERALD ST

FOR SALE, LEASE, OR BTS / BOISE, ID 83704

JOINT SPECIALIST
Saint Alphonus

URGENT CARE
Saint Alphonus

REHAB. CENTER
Saint Alphonus

EMERALD STREET



SITE

CURTIS ROAD

DENTON STREET

CONTACT

PETER OLIVER, SIOR, CCIM
208.947.0816
peter@tokcommercial.com

NICK SCHUITEMAKER, CCIM
208.947.0802
nick@tokcommercial.com

HIGHLIGHTS

- Surrounded by quality medical office users.
- Just off of the connector via Curtis Road and minutes to I-84.
- Located directly behind the St. Alphonus Medical Center campus.
- MX-1 Mixed Use Neighborhood zoning allows for a variety of users.
- Corner lot exposure at Emerald and St. Al's Rehabilitation Hospital entrance.

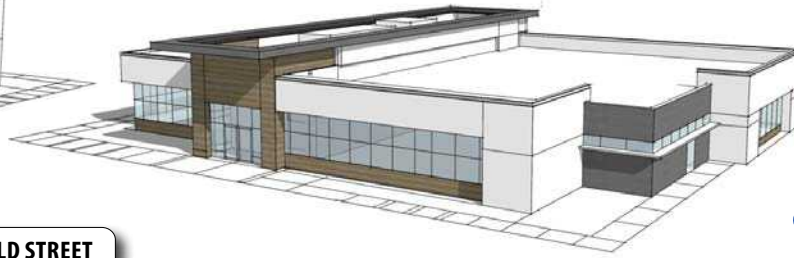
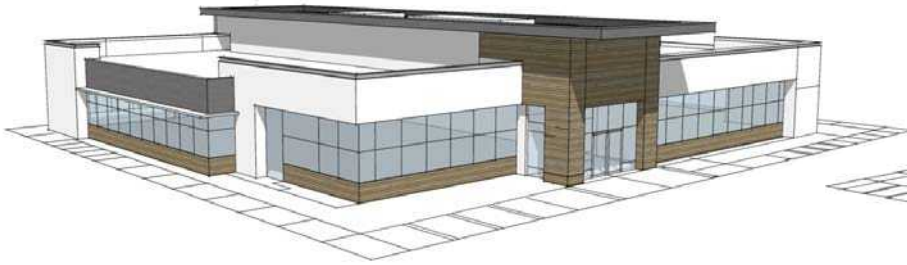
DETAILS

SALE PRICE:	\$2,200,000
LEASE RATE:	Contact Agent
SUBMARKET:	Central Boise
BLDG TYPE:	Medical Office
BLDG SIZE:	11,200 to 13,100 SF
PARKING:	65 Stalls
ZONING:	MX-1

UPDATED: 5.26.2026

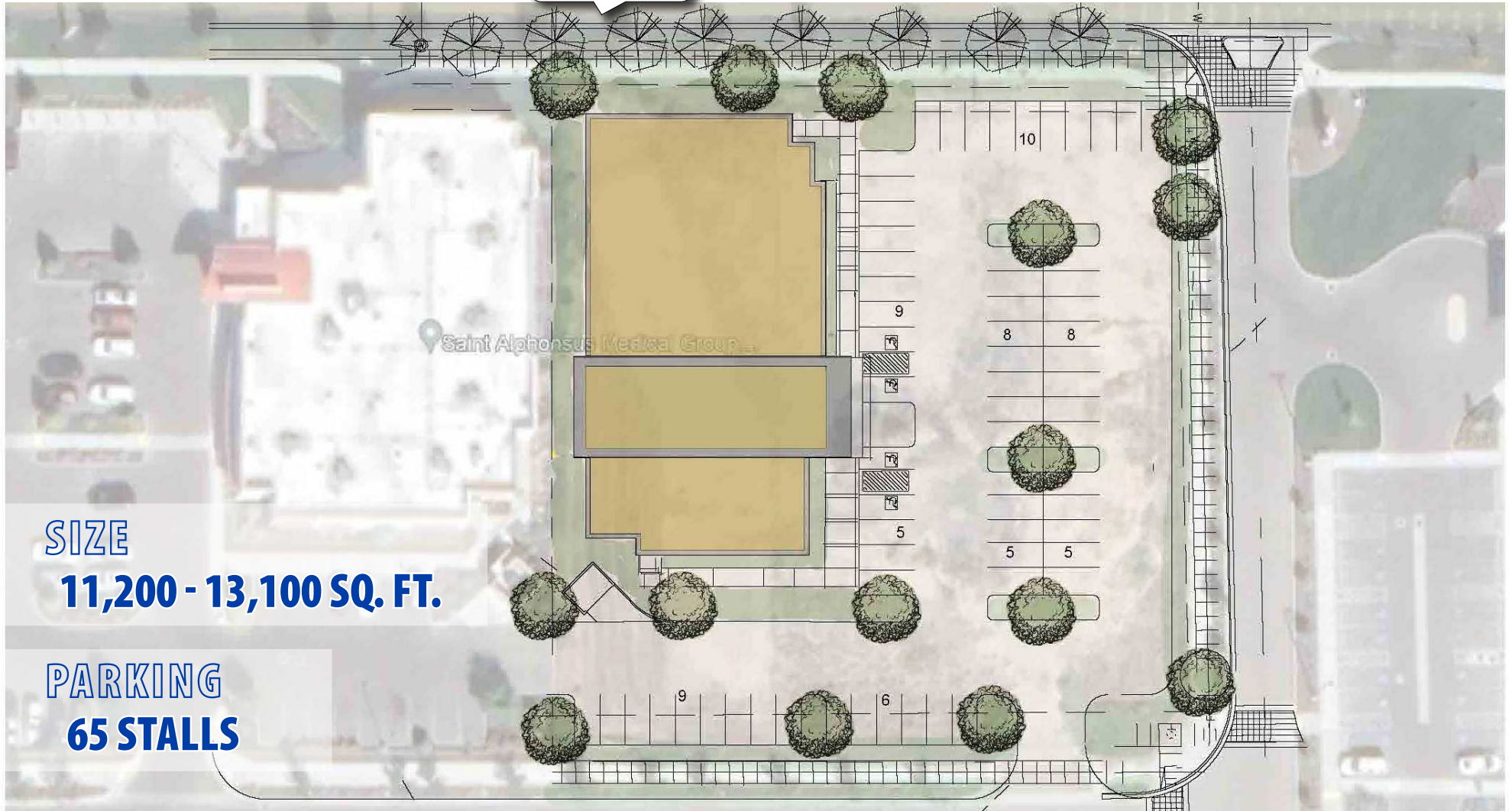
THIS PROPERTY IS EXCLUSIVELY MARKETED BY TOK BOISE LLC DBA TOK COMMERCIAL. This information was obtained from sources believed reliable but cannot be guaranteed. Any opinions or estimates are used for example only.

TOKCOMMERCIAL.COM



CONCEPTUAL SITE PLAN

EMERALD STREET



SIZE

11,200 - 13,100 SQ. FT.

PARKING

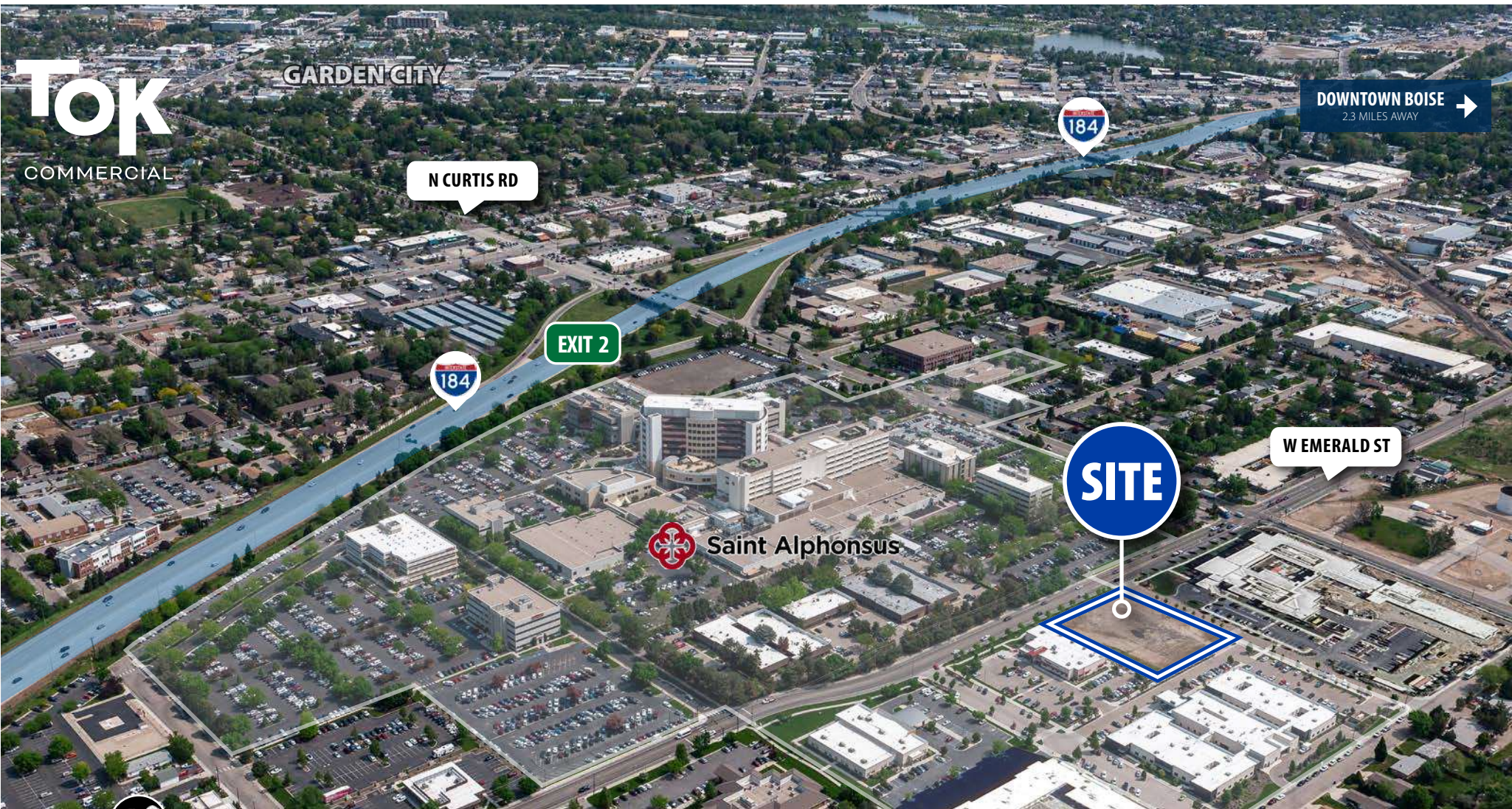
65 STALLS

5963 EMERALD STREET

UPDATED: 5.26.2026

THIS PROPERTY IS EXCLUSIVELY MARKETED BY TOK BOISE LLC DBA TOK COMMERCIAL
This information was obtained from sources believed reliable but cannot be guaranteed. Any opinions or estimates are used for example only.

TOKCOMMERCIAL.COM



 **ZONING | MX-1 MIXED-USE: NEIGHBORHOOD**

MX-1 | Mixed-use: Neighborhood

MX-1 is Boise’s Mixed-Use: Neighborhood zone that supports neighborhood-scale medical and healthcare uses—such as clinics, therapy practices, dental offices, and small outpatient facilities—integrated with residential and limited commercial uses in a walkable, pedestrian-oriented setting, emphasizing active street-facing entrances, patient-friendly access, and compatibility with surrounding housing.

5963 EMERALD STREET

UPDATED: 5.26.2026

THIS PROPERTY IS EXCLUSIVELY MARKETED BY TOK BOISE LLC DBA TOK COMMERCIAL
This information was obtained from sources believed reliable but cannot be guaranteed. Any opinions or estimates are used for example only.