

FOR SALE

19258 15th Avenue NW, Lake Forest Park, WA 98155





Site Summary

Building SF: Building SF: 7,660
Floor 1 - 4,316 SF
Floor 2 - 3,344 SF

Land SF: 14,934 SF

Zoning: Neighborhood Business (NB)

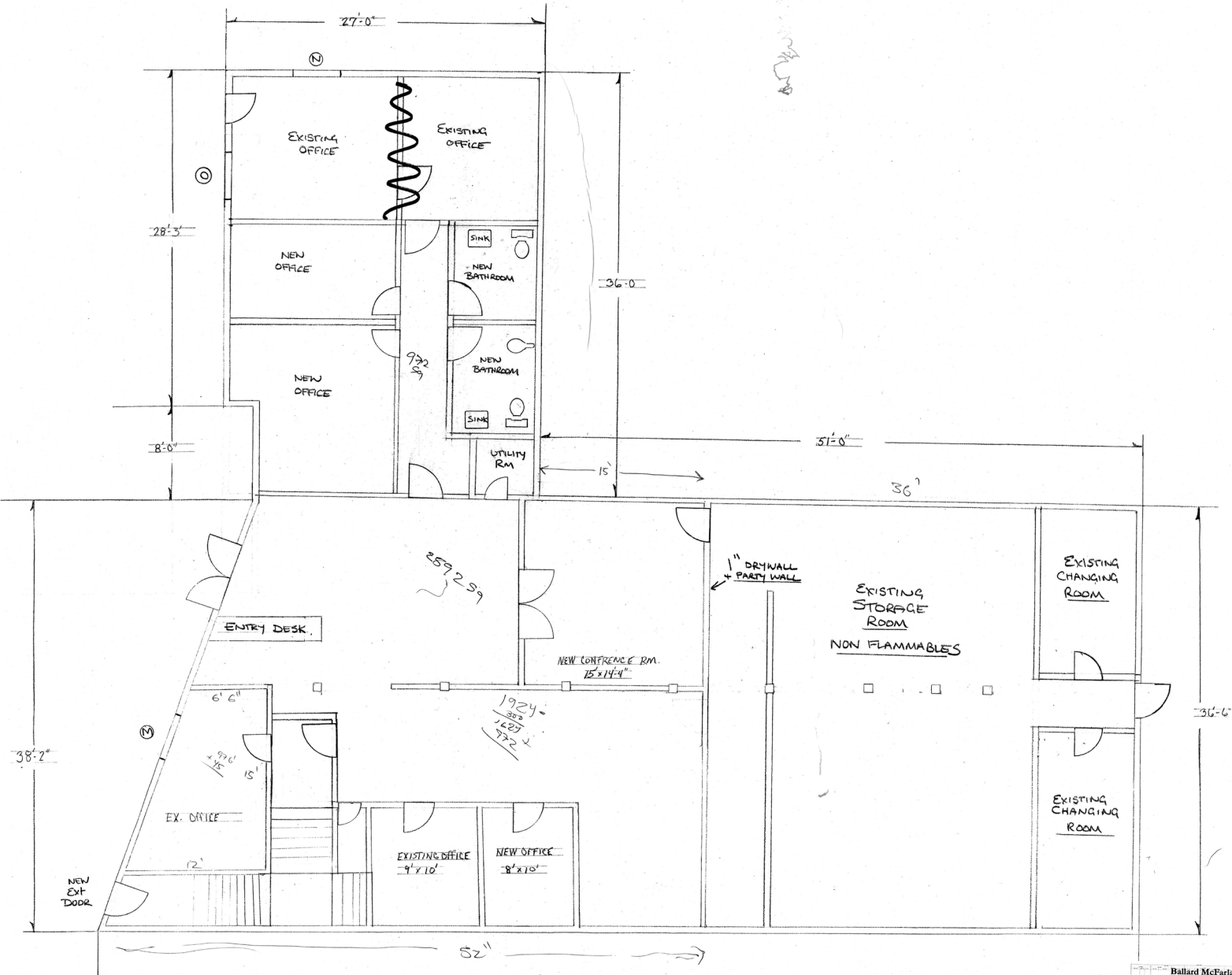
Tenants: The Kushery (MMJ) - lease expires
4/30/2027 (downstairs)
GMG Construction - month to month
Seattle Best Plumbing - month to month

High Visibility: Located on 15th Ave NE, a primary north-south arterial connecting Shoreline and Lake Forest Park.

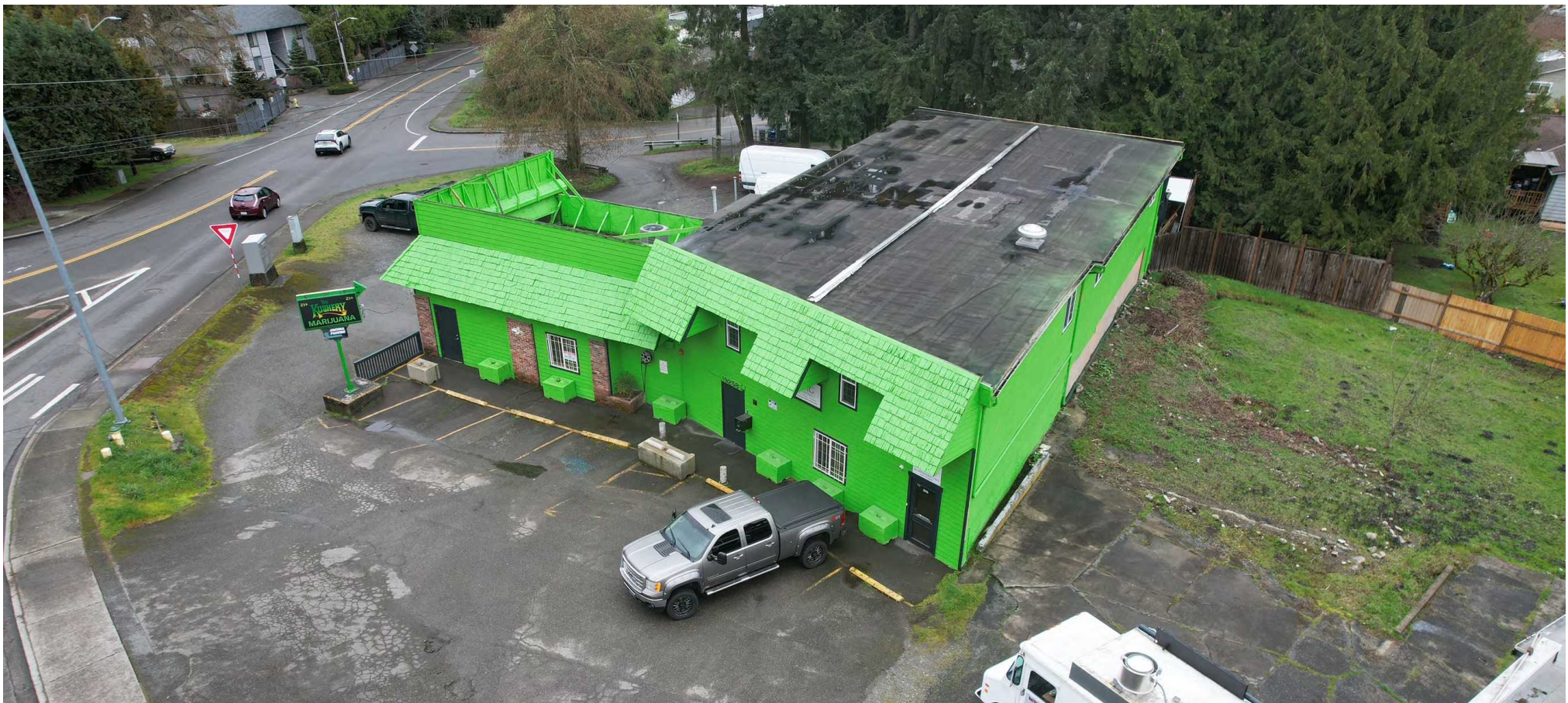
The Gateway Location: approx. 4,380+ vehicles per day. Positioned perfectly between the affluent residential streets of Lake Forest Park and the high-growth corridors of Shoreline.

Transit-Oriented Opportunity: Minutes from the new Shoreline Light Rail stations, providing a future-proof location for future redevelopment.

FLOOR PLAN



Ballard McFarlane



19258 15th Avenue NW,
Lake Forest Park, WA 98155

Blake Taylor

blake@wccommercialrealty.com

206 931 0525

WCCR | West Coast
Commercial
Realty

DISCLAIMER: The above information has been secured from sources believed to be reliable, however, no representations are made to its accuracy. Prospective tenants or buyers should consult their professional advisors and conduct their own independent investigation. Site plan and configuration are subject to change. Properties are subject to change in price and/or availability without notice. West Coast Commercial Realty, LLC

MEMBER OF
SITE SOURCE
DIGITAL. BROKER. REAL ESTATE.

CBA

ICSC

CoStar
POWERBROKER

206 283 5212
wccommercialrealty.com