



BANNOCK BUILDING PROFESSIONAL/OFFICES

OFFICE SPACE FOR LEASE | 845 W CENTER ST | POCATELLO, ID



CONTACT



NICK TERRY
208.357.4678
nickt@tokcommercial.com

HIGHLIGHTS



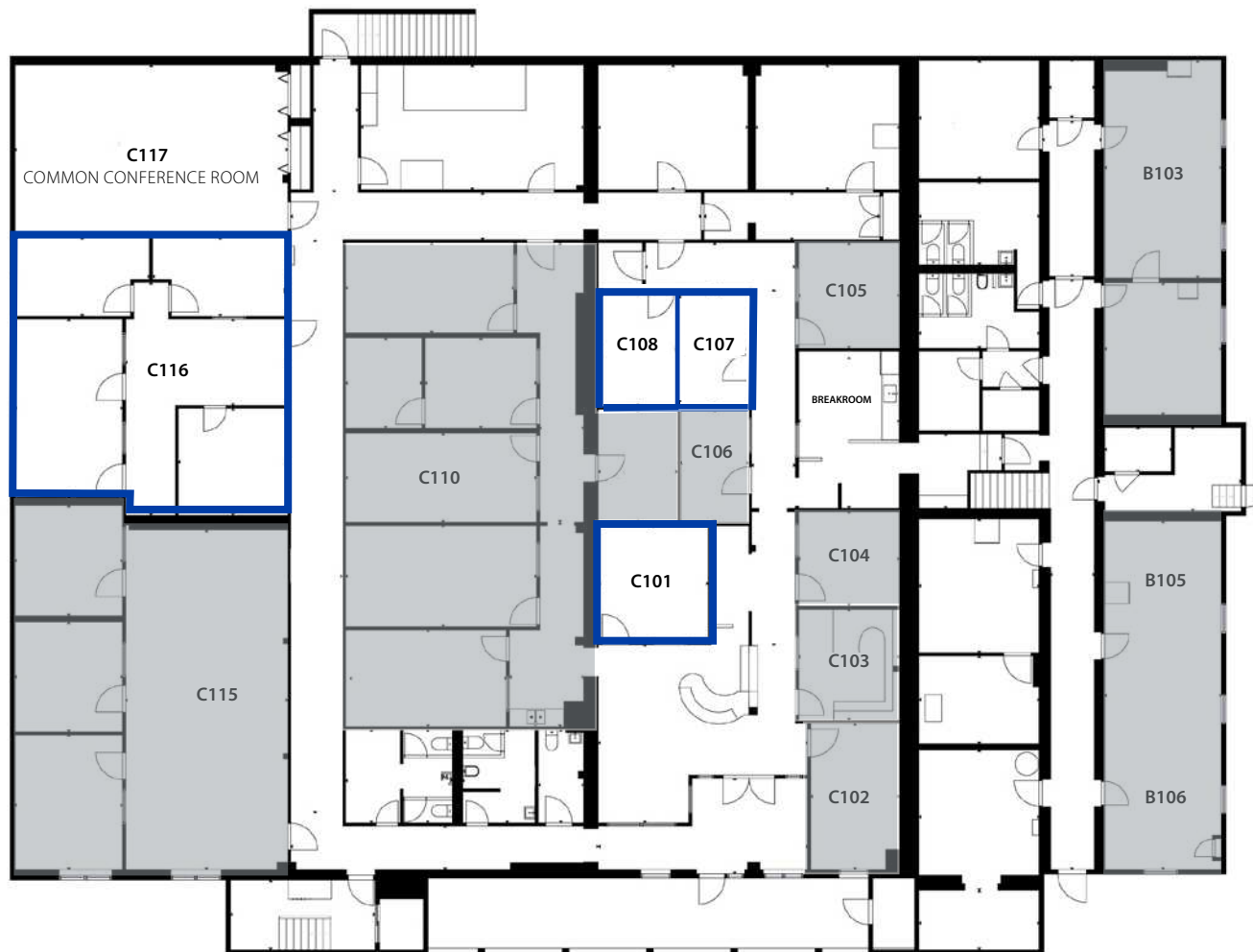
- Prominent, historic office building in Pocatello, ID.
- Rare, small office suites available — variable size options available to fit tenant needs.
- Abundant on-site, shared tenant parking.
- Excellent location within walking distance to prime downtown restaurants, shops, and services.

DETAILS



BLDG SIZE:	35,034 SF
T.I. ALLOWANCE:	Negotiable
SPACE AVAILABLE:	See Floor Plans
LEASE RATE:	See Floor Plan Pages
LEASE TYPE:	FSEJ
LEASE TERM:	Negotiable
AVAILABLE:	Immediately, Unless Otherwise Stated

SPACE	SIZE	LEASE RATE
C101	144 SF	\$425/Mo.
C107	100 SF	\$300/Mo.
C108	120 SF	\$300/Mo.
C116	925 SF	\$1,000/Mo.



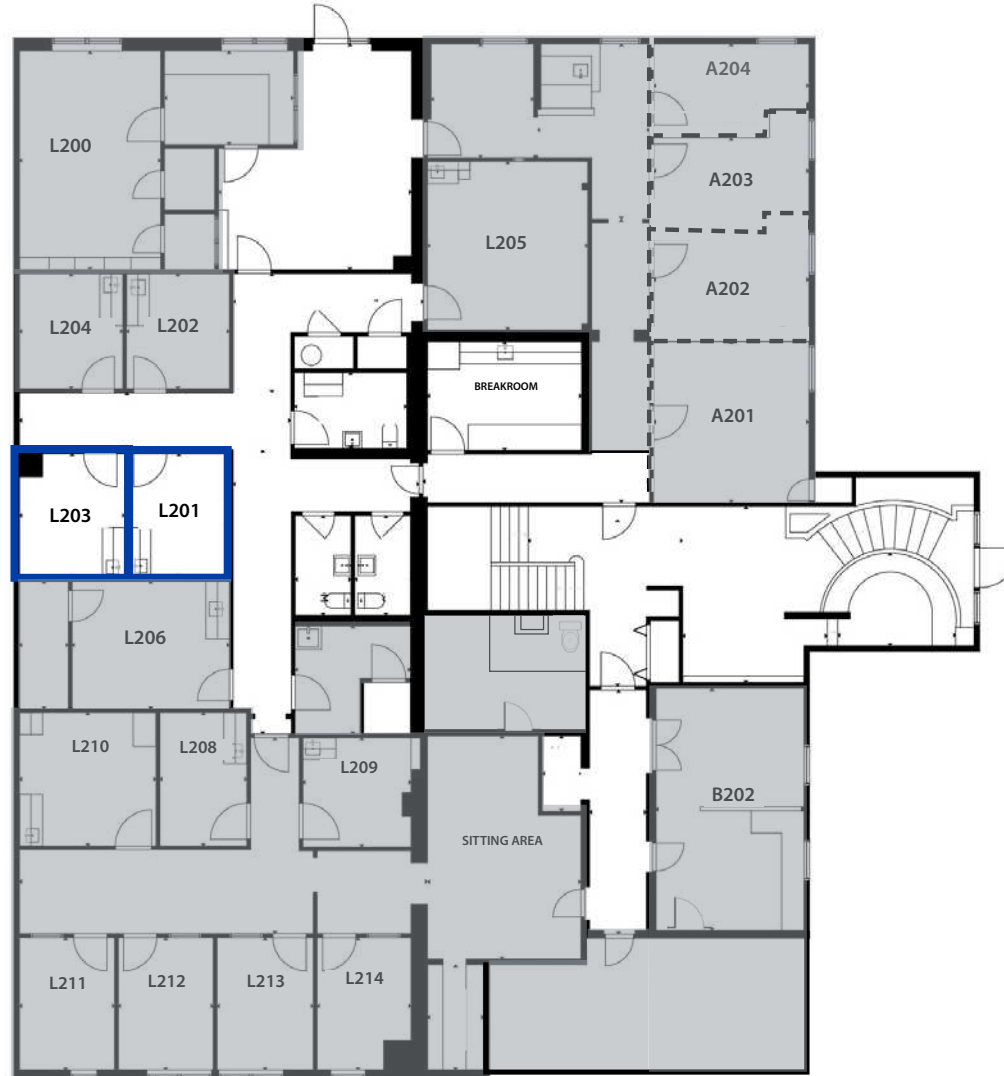
FIRST FLOOR

AVAILABLE
 LEASED

UPDATED: 6.4.2026

THIS PROPERTY IS EXCLUSIVELY MARKETED BY TOK EASTERN IDAHO LLC DBA TOK COMMERCIAL
 This information was obtained from sources believed reliable but cannot be guaranteed. Any opinions or estimates are used for example only.

SPACE	SIZE	LEASE RATE
L201	102 SF	\$300/Mo.
L203	92 SF	\$300/Mo.



SECOND FLOOR

■ AVAILABLE
■ LEASED

UPDATED: 6.4.2026

THIS PROPERTY IS EXCLUSIVELY MARKETED BY TOK EASTERN IDAHO LLC DBA TOK COMMERCIAL
This information was obtained from sources believed reliable but cannot be guaranteed. Any opinions or estimates are used for example only.

SPACE	SIZE	LEASE RATE
B304	154 SF	\$250/Mo.



THIRD FLOOR

- AVAILABLE
- LEASED

UPDATED: 6.4.2026

THIS PROPERTY IS EXCLUSIVELY MARKETED BY TOK EASTERN IDAHO LLC DBA TOK COMMERCIAL
 This information was obtained from sources believed reliable but cannot be guaranteed. Any opinions or estimates are used for example only.

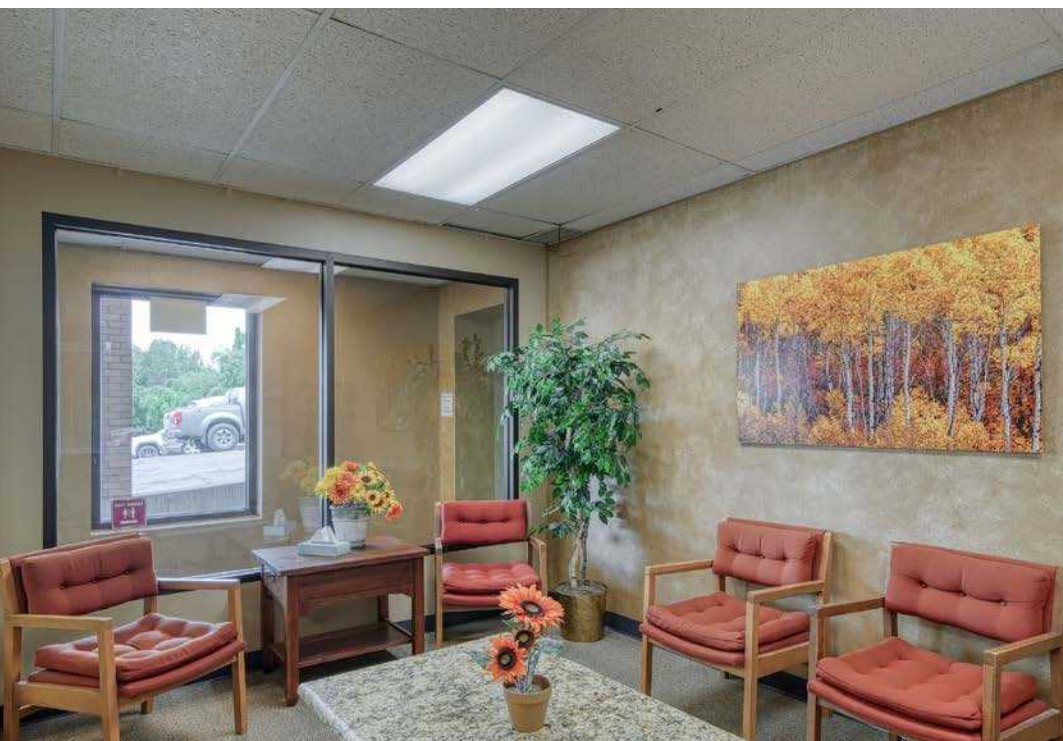


UPDATED: 6.4.2026

THIS PROPERTY IS EXCLUSIVELY MARKED BY TOK EASTERN IDAHO LLC DBA TOK COMMERCIAL

This information was obtained from sources believed reliable but cannot be guaranteed. Any opinions or estimates are used for example only.

TOKCOMMERCIAL.COM



UPDATED: 6.4.2026

THIS PROPERTY IS EXCLUSIVELY MARKETED BY TOK EASTERN IDAHO LLC DBA TOK COMMERCIAL

This information was obtained from sources believed reliable but cannot be guaranteed. Any opinions or estimates are used for example only.

S LINCOLN AVENUE

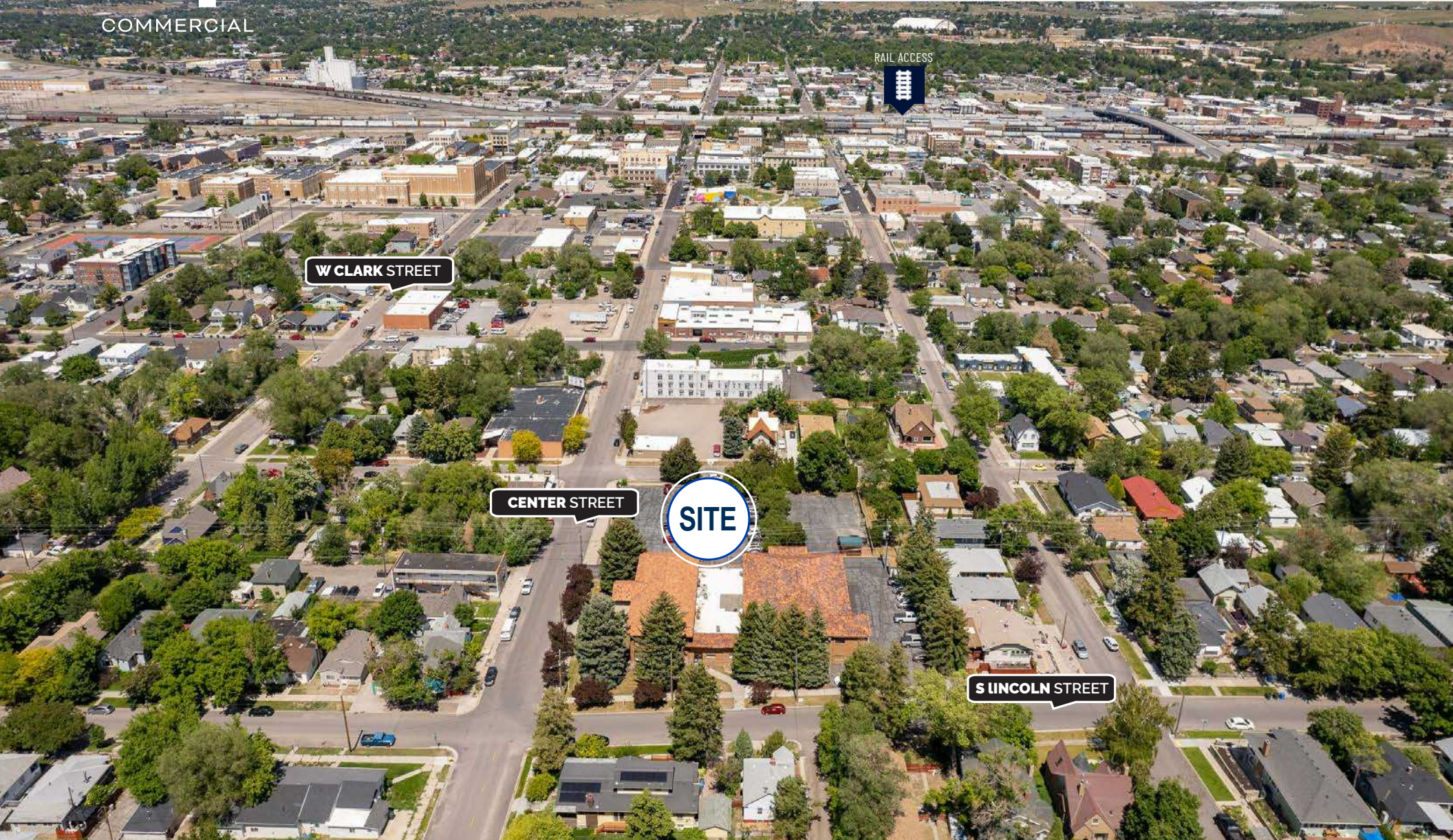
SITE

CENTER STREET

UPDATED: 6.4.2026

THIS PROPERTY IS EXCLUSIVELY MARKETED BY TOK EASTERN IDAHO LLC DBA TOK COMMERCIAL

This information was obtained from sources believed reliable but cannot be guaranteed. Any opinions or estimates are used for example only.



UPDATED: 6.4.2026

THIS PROPERTY IS EXCLUSIVELY MARKETED BY TOK EASTERN IDAHO LLC DBA TOK COMMERCIAL

This information was obtained from sources believed reliable but cannot be guaranteed. Any opinions or estimates are used for example only.