

IN A PORTION OF THE SW 1/4, SECTION 29, TOWNSHIP 34 NORTH, RANGE 4 EAST, W.M. MOUNT VERNON, WASHINGTON

**SITE PLAN NOTES**

1. BUILDING A CONFORMS TO WASHINGTON STATE CODES AND REGULATIONS.
2. BUILDING B CONFORMS TO WASHINGTON STATE CODES AND REGULATIONS.
3. BUILDING C CONFORMS TO WASHINGTON STATE CODES AND REGULATIONS.
4. ALL DIMENSIONS ARE GIVEN UNLESS OTHERWISE SPECIFIED.
5. ALL DIMENSIONS ARE GIVEN UNLESS OTHERWISE SPECIFIED.
6. ALL DIMENSIONS ARE GIVEN UNLESS OTHERWISE SPECIFIED.
7. ALL DIMENSIONS ARE GIVEN UNLESS OTHERWISE SPECIFIED.
8. ALL DIMENSIONS ARE GIVEN UNLESS OTHERWISE SPECIFIED.
9. ALL DIMENSIONS ARE GIVEN UNLESS OTHERWISE SPECIFIED.
10. ALL DIMENSIONS ARE GIVEN UNLESS OTHERWISE SPECIFIED.
11. ALL DIMENSIONS ARE GIVEN UNLESS OTHERWISE SPECIFIED.
12. ALL DIMENSIONS ARE GIVEN UNLESS OTHERWISE SPECIFIED.
13. ALL DIMENSIONS ARE GIVEN UNLESS OTHERWISE SPECIFIED.
14. ALL DIMENSIONS ARE GIVEN UNLESS OTHERWISE SPECIFIED.
15. ALL DIMENSIONS ARE GIVEN UNLESS OTHERWISE SPECIFIED.
16. ALL DIMENSIONS ARE GIVEN UNLESS OTHERWISE SPECIFIED.
17. ALL DIMENSIONS ARE GIVEN UNLESS OTHERWISE SPECIFIED.
18. ALL DIMENSIONS ARE GIVEN UNLESS OTHERWISE SPECIFIED.
19. ALL DIMENSIONS ARE GIVEN UNLESS OTHERWISE SPECIFIED.
20. ALL DIMENSIONS ARE GIVEN UNLESS OTHERWISE SPECIFIED.

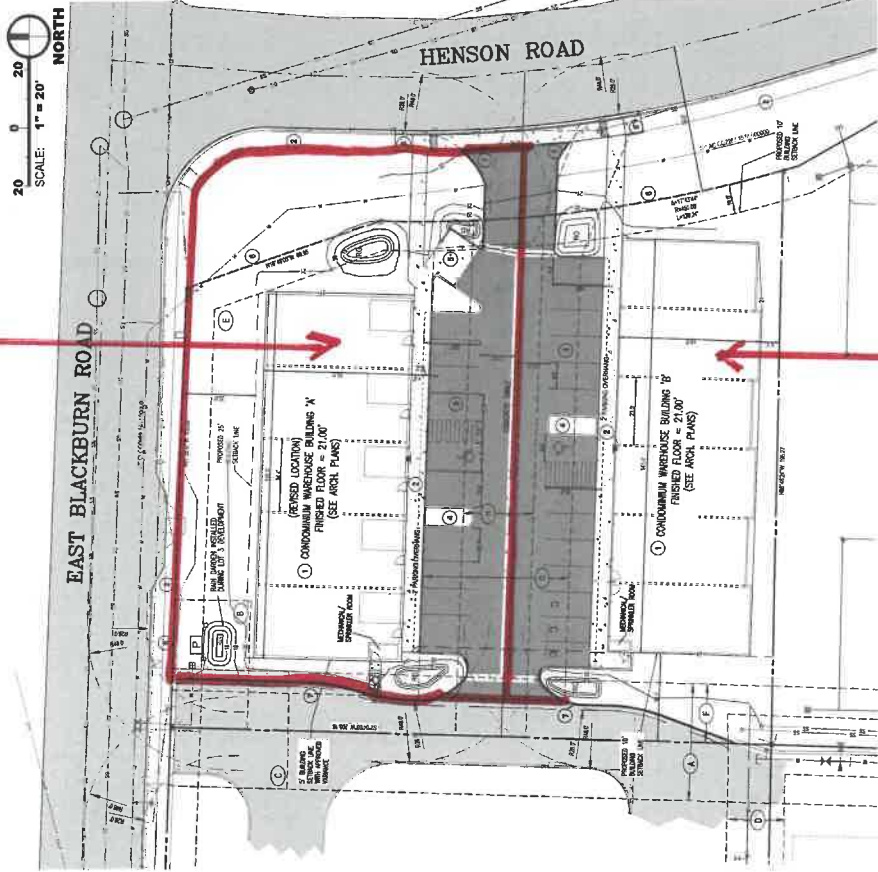
**PROPOSED PARKING**

| BUILDING | TYPE OF USE | PROPOSED PARKING | REQUIREMENTS | REMARKS   |
|----------|-------------|------------------|--------------|-----------|
| A        | WAREHOUSE   | 15 SPACES        | 15 SPACES    | 15 SPACES |
| B        | WAREHOUSE   | 15 SPACES        | 15 SPACES    | 15 SPACES |
| C        | WAREHOUSE   | 15 SPACES        | 15 SPACES    | 15 SPACES |

**REVISION 2 NOTE**

- THE FOLLOWING REVISIONS HAVE BEEN MADE TO THE PREVIOUS EDITIONS OF THIS PLAN SET:
1. BUILDING A CONFORMS TO WASHINGTON STATE CODES AND REGULATIONS.
  2. BUILDING B CONFORMS TO WASHINGTON STATE CODES AND REGULATIONS.
  3. BUILDING C CONFORMS TO WASHINGTON STATE CODES AND REGULATIONS.
  4. ALL DIMENSIONS ARE GIVEN UNLESS OTHERWISE SPECIFIED.
  5. ALL DIMENSIONS ARE GIVEN UNLESS OTHERWISE SPECIFIED.
  6. ALL DIMENSIONS ARE GIVEN UNLESS OTHERWISE SPECIFIED.
  7. ALL DIMENSIONS ARE GIVEN UNLESS OTHERWISE SPECIFIED.
  8. ALL DIMENSIONS ARE GIVEN UNLESS OTHERWISE SPECIFIED.
  9. ALL DIMENSIONS ARE GIVEN UNLESS OTHERWISE SPECIFIED.
  10. ALL DIMENSIONS ARE GIVEN UNLESS OTHERWISE SPECIFIED.
  11. ALL DIMENSIONS ARE GIVEN UNLESS OTHERWISE SPECIFIED.
  12. ALL DIMENSIONS ARE GIVEN UNLESS OTHERWISE SPECIFIED.
  13. ALL DIMENSIONS ARE GIVEN UNLESS OTHERWISE SPECIFIED.
  14. ALL DIMENSIONS ARE GIVEN UNLESS OTHERWISE SPECIFIED.
  15. ALL DIMENSIONS ARE GIVEN UNLESS OTHERWISE SPECIFIED.
  16. ALL DIMENSIONS ARE GIVEN UNLESS OTHERWISE SPECIFIED.
  17. ALL DIMENSIONS ARE GIVEN UNLESS OTHERWISE SPECIFIED.
  18. ALL DIMENSIONS ARE GIVEN UNLESS OTHERWISE SPECIFIED.
  19. ALL DIMENSIONS ARE GIVEN UNLESS OTHERWISE SPECIFIED.
  20. ALL DIMENSIONS ARE GIVEN UNLESS OTHERWISE SPECIFIED.

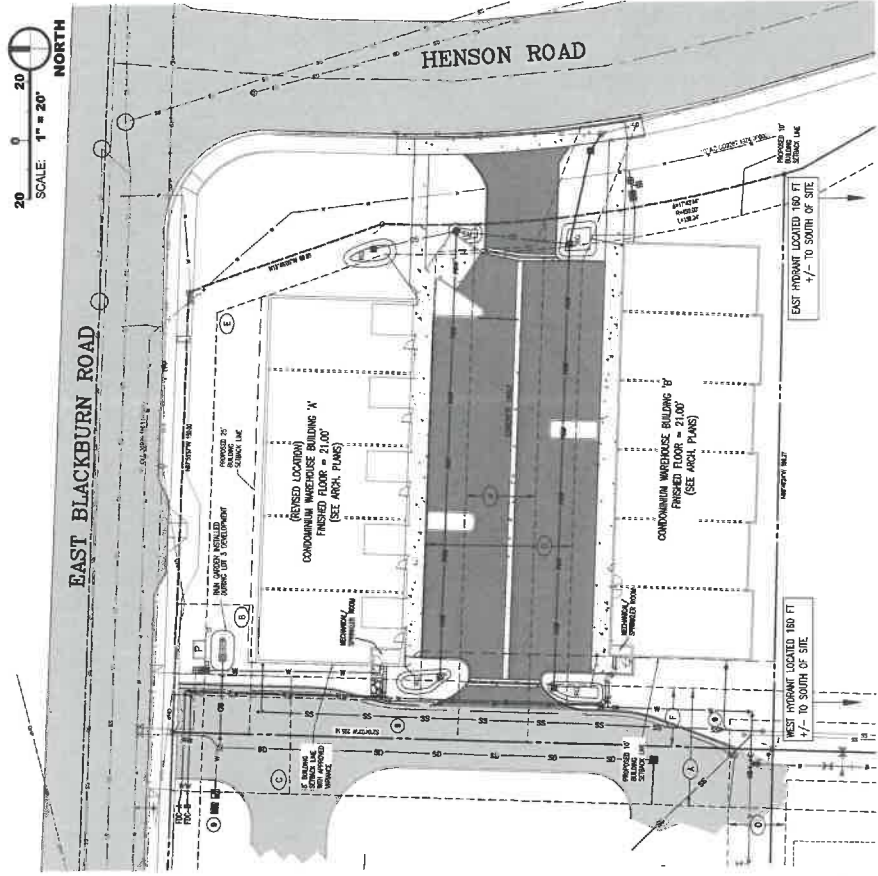
**BUILDING PLAN**



**PHASE 1**

**PHASE 2**

**UTILITY PLAN**



**LEONARD KARGACIN**  
FOR  
**LOT 4 \$MVB**  
**SITE PLAN**

**SITE & UTILITY PLAN**



SCALE: 1" = 20'  
DRAWN BY: C. SEVERIN  
DESIGNED BY: P. SEVERIN  
DATE: 12.22.2021  
JOB NUMBER: 21028  
DWG NAME: 21028ENG.DWG  
SHEET NUMBER: C-1.2

**CALL 48 HOURS BEFORE YOU DIG 1.800.424.3555**

**Sound Development Group**  
P.O. Box 1706, Mt. Vernon, WA 98573  
Tel: 509.462.0201  
www.sounddevelopment.com