

FOR SALE

19 Acres of Commercial Development Land

1710 W Columbia Rd, Meridian, ID 83642



Accelerating success.



Logan Wheeler

+1 208 472 2868

logan.wheeler@colliers.com

Kelly Schnebly

+1 208 472 1650

kelly.schnebly@colliers.com

Charlie Finn

+1 323 301 0234

charlie.finn@colliers.com

Jimmy Roumanis

+1 208 908 8998

jimmy.roumanis@colliers.com

Erik Forgione

+1 208 918 2805

erik.forgione@colliers.com

City of Kuna Zoning Information*

City of Kuna Land Use Table*



1710 W Columbia Rd

has prime exposure along one of the Treasure Valley's fastest growing east-west routes. This growth is supported by the City of Kuna's* [comprehensive plans](#) which focus on corridor connectivity and transportation investments linking Kuna with South Meridian employment, retail, and residential growth.

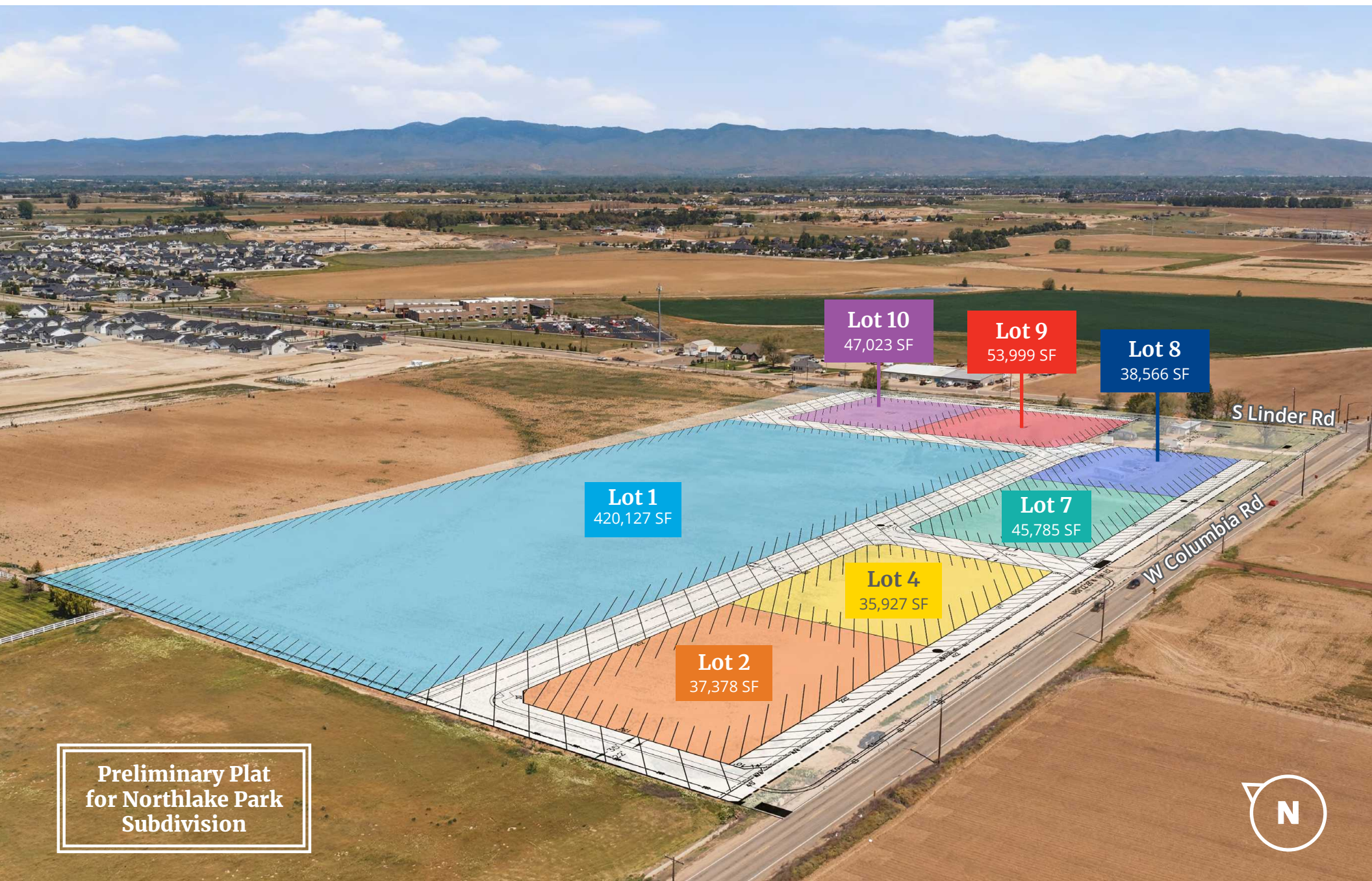
PROPERTY OVERVIEW

Property Type	Land
Size	± 19 Acres
Location	NWC Columbia and Linder
Zoning	C-2
Price	Contact Agent

DEMOGRAPHICS

	1 Mile	3 Miles	5 Miles
Population	2,559	33,744	92,021
Households	833	11,439	32,308
Average Household Income	\$162,169	\$138,496	\$142,927

*Anticipated annexation into City of Kuna in late summer 2026.



Lot 1
420,127 SF

Lot 2
37,378 SF

Lot 4
35,927 SF

Lot 10
47,023 SF

Lot 9
53,999 SF

Lot 8
38,566 SF

Lot 7
45,785 SF

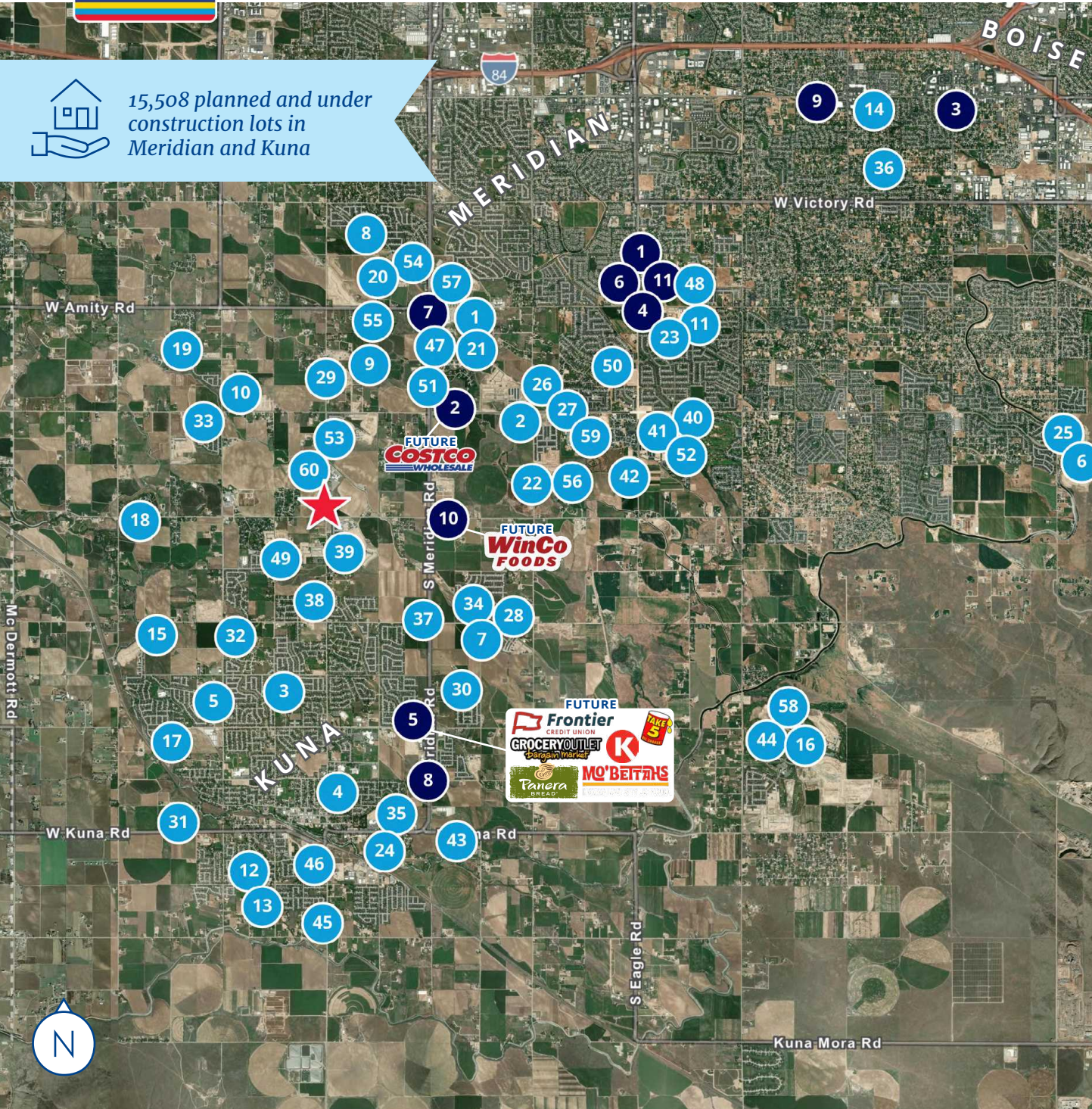
**Preliminary Plat
for Northlake Park
Subdivision**



DEVELOPMENT IN MERIDIAN & KUNA



15,508 planned and under construction lots in Meridian and Kuna



★ 1710 W Columbia Rd

Residential Developments Planned & Under Construction

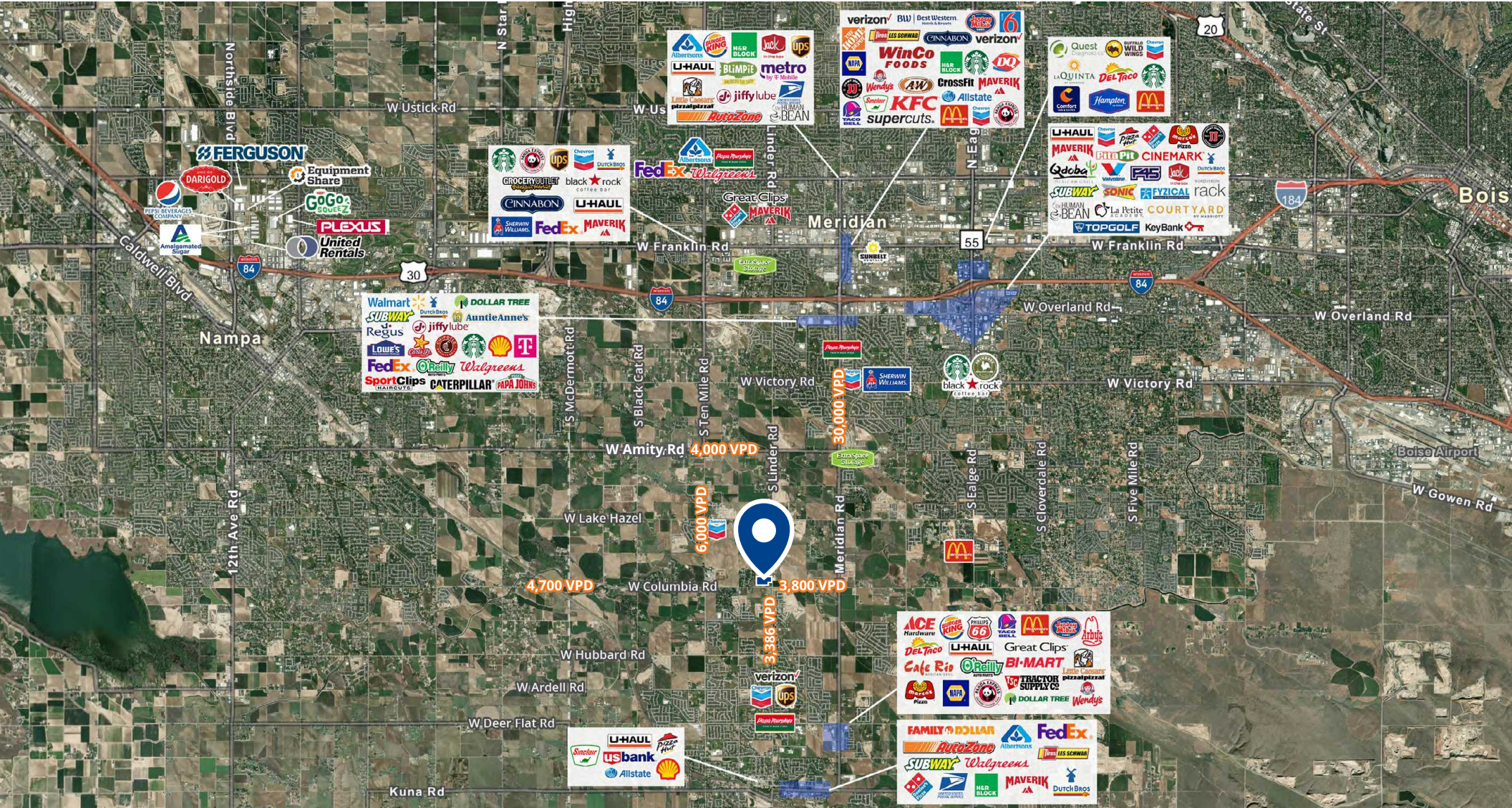
- 1 Allure
- 2 Apex/Pinnacle
- 3 Ardell Estates
- 4 Arroyo Vista
- 5 Athleta
- 6 Barnwood
- 7 Bellaro Springs
- 8 Biltmore Estates
- 9 Briar Ridge
- 10 Caspian
- 11 Centerville
- 12 Chotika
- 13 Circinae Valley
- 14 Ebb and Flow
- 15 Ewing Meadows
- 16 Falcon Crest
- 17 Fossil Creek
- 18 Gallica Heights
- 19 Gran Prado
- 20 Graycliff Estates
- 21 Grayson
- 22 Hadler
- 23 Hill's Century Farm Townhomes
- 24 Journey's End
- 25 Kirsten
- 26 Lavender Heights
- 27 Lavender Place
- 28 Ledgestone
- 29 Linrock
- 30 Lugarno Terra
- 31 Madrone Heights
- 32 Malaspina Ranch
- 33 Memory Ranch
- 34 Merino Cove
- 35 Merlin Cottages
- 36 Monitor Way
- 37 Napa Vineyards
- 38 Paloma Ridge

- 39 Patagonia East, Ridge & Lakes
- 40 Poiema
- 41 Pura Vida Ridge Ranch
- 42 Reveille Ridge
- 43 Rising Sun
- 44 Robinhood
- 45 Rockaway Cove
- 46 Sera Sole
- 47 Shafer View
- 48 Shelburne South
- 49 Silver Trail
- 50 Sky Mesa
- 51 Sky Ranch
- 52 Skybreak
- 53 Springhill
- 54 Stapleton
- 55 Storyrock
- 56 Summerlin
- 57 Syringa Crossing
- 58 Valor Golf Village
- 59 Vertex
- 60 Whisper Meadows

Commercial Developments Planned & Under Construction

- 1 Chase Bank
- 2 Costco
- 3 Maple Grove Apartments
- 4 Mystic Realm Escape Rooms
- 5 Paul Bunyan Plaza: Grocery Outlet, Panera Bread, Burger King, Take 5, Circle K, Frontier Credit Union, Mo Bettahs
- 6 Potlatch No 1 Financial Credit Union
- 7 Syringa Crossing Grocery & Comm Dev
- 8 True Grit Sports Complex
- 9 Washington Trust Bank & Tommy's Express Car Wash
- 10 Winco Foods
- 11 Zigg's Coffee

LOCATION



755 West Front Street, Suite 300
 Boise, Idaho 83702
 +1 208 345 9000
 colliers.com/idaho

This document has been prepared by Colliers for advertising and general information only. Colliers makes no guarantees, representations or warranties of any kind, expressed or implied, regarding the information including, but not limited to, warranties of content, accuracy and reliability. Any interested party should undertake their own inquiries as to the accuracy of the information. Colliers excludes unequivocally all inferred or implied terms, conditions and warranties arising out of this document and excludes all liability for loss and damages arising therefrom. This publication is the copyrighted property of Colliers and /or its licensor(s). © 2026. All rights reserved. This communication is not intended to cause or induce breach of an existing listing agreement. Colliers Paragon, LLC.