



 SR-99 / SE EVERETT MALL WAY
32,032 VPD



Everett Jewel Box **& SECURED YARD**

CONFIDENTIAL OFFERING MEMORANDUM

Everett Jewel Box & Secured Yard

3,000 SF JEWEL BOX OFFICE ON 1.07 AC WITH EXPANSIVE 30,000+ SF YARD

118 SE Everett Mall Way, Everett, WA 98204





OFFERED EXCLUSIVELY BY

RJ VARA

Senior Vice President
206.584.6195
rvara@northmarq.com
License: WA 135292

JOHN MARKS

Associate Vice President
425.299.8048
jmarks@northmarq.com
License: WA 139009

JACK HINCHCLIFFE

Associate
206.743.6999
jhinchcliffe@northmarq.com
License: WA 24028466

KEVIN ADATTO

License: WA 21038208

DEBT & EQUITY

STUART OSWALD

Managing Director
425.974.1005
soswald@northmarq.com

JACK BELL

Associate Producer
425.974.1058
jbell@northmarq.com

Northmarq

130 Nickerson St, Suite 200
Seattle, WA 98109

northmarq.com

CONFIDENTIALITY AND RESTRICTED USE AGREEMENT

This Confidential Offering Memorandum ("COM") is provided by Northmarq, solely for your consideration of the opportunity to acquire the commercial property described herein (the "Property"). This COM may be used only as stated herein and shall not be used for any other purpose, or in any other manner, without prior written authorization and consent of Northmarq.

This COM does not constitute or pertain to an offer of a security or an offer of any investment contract. This COM contains descriptive materials, financial information and other data compiled by Northmarq for the convenience of parties who may be interested in the Property. Such information is not all inclusive and is not represented to include all information that may be material to an evaluation of the acquisition opportunity presented. Northmarq has not independently verified any of the information contained herein and makes no representations or warranties of any kind concerning the accuracy or completeness thereof. All summaries and discussions of documentation and/or financial information contained herein are qualified in their entirety by reference to the actual documents and/or financial statements, which upon request may be made available. An interested party must conduct its own independent investigation and verification of any information the party deems material to consideration of the opportunity, or otherwise appropriate, without reliance upon Northmarq.

The Property may be financed or withdrawn from the market without notice, and its owner(s) reserve(s) the right to negotiate with any number of interested parties at any time. The Property is offered and sold by its owner(s) as is, where is, and with all faults, without representation or warranty of any kind except for any customary warranties of title.

BY ACCEPTING THIS COM, YOU AGREE THAT: (1) all information contained herein, and all other information you have received or may hereafter receive from Northmarq relating to the Property, whether oral, written or in any other form (collectively, the "Information"), is strictly confidential; (2) you will not copy or reproduce, and claim as your own without attribution to Northmarq, all or any part of this COM or the Information; (3) upon request by Northmarq at any time, you will return and/or certify your complete destruction of all copies of this COM and the Information; (4) for yourself and all your affiliates, officers, employees, representatives, agents and principals, you hereby release and agree to indemnify and hold harmless Northmarq all of its affiliates, officers, employees, representatives, agents and principals, from and with respect to any and all claims and liabilities arising from or related to the receipt or use of this COM and/or any other Information concerning the Property; (5) you will not provide this COM or any of the Information to any other party unless you first obtain such party's acceptance and approval of all terms, conditions, limitations and agreements set forth herein, as being applicable to such party as well as to you; and (6) monetary damages alone will not be an adequate remedy for a violation of these terms and that Northmarq shall be entitled to equitable relief, including, but not limited to, injunctive relief and specific performance, in connection with such a violation and shall not be required to post a bond when obtaining such relief.



TABLE OF
CONTENTS

SECTION 1 Executive Overview	4
SECTION 2 Property Summary	8
SECTION 3 Market Overview	9



Investment Overview

The “Everett Jewel Box & Secured Yard” offers a unique operational and investment opportunity at 118 SE Everett Mall Way, featuring a move-in-ready 3,000 SF building on a substantial 46,611 SF lot. This boutique asset is distinguished by its high-end interior finishes and an expansive 30,860 SF storage yard, a highly functional combination that is increasingly rare in the Everett market. Located along a high-traffic corridor with immediate access to Interstate 5, the property provides exceptional visibility and logistical advantages for businesses seeking a turnkey headquarters with significant outdoor storage capacity.

The offering’s flexible layout and ample parking (5.33 stalls per 1,000 rentable SF) supports a wide range of commercial uses, ensuring long-term marketability and minimal operational friction. Whether acquired for immediate business use or as a strategic addition to a portfolio, this asset represents a versatile and high-quality facility in a dynamic Pacific Northwest submarket.

SALE PRICE: \$2,950,000

LEASE RATE: \$13,000/month + NNN

BUILDING SIZE: 3,000 SF

STORAGE YARD: 30,860 SF

TOTAL LAND AREA: 46,611 SF (1.07 Acres)

AVAILABILITY: 60 Days Notice



FLYING SQUIRREL
THE WORLD'S LARGEST INDOOR TRAMPOLINE PARK

Walmart
Supercenter

Urban Air
ADVENTURE PARK

ULTA
BEAUTY

REGAL

SPORTSMAN'S
WAREHOUSE

TRADER JOE'S

HomeGoods

EVERETT MALL
MINI STORAGE

TARGET

Chick-fil-&

T.J. maxx

McDonald's

Panera
BREAD

usbank

jamba

Everett Jewel Box & SECURED YARD

Albright
FAMILY DENTAL
DR. JASON L. KAOPUA, DMD

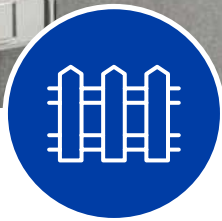
99

1ST DR SE

 **SR-99 / SE EVERETT MALL WAY**
32,032 VPD

CHASE

Investment Highlights



EXCEPTIONAL LOT COVERAGE

Rare 10% building to yard ratio featuring 30,860 SF of secured outdoor storage on a 1.07-acre site.

TURNKEY CONDITION

High-end “jewel box” interior finishes provide an immediate, move-in-ready solution with zero required capital expenditures.

LOGISTICAL CONNECTIVITY

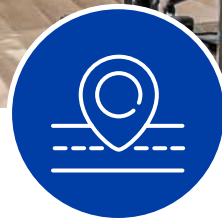
Premier regional access situated 1.1 miles from the interchange of SR-99 & Interstate 5.

Investment Highlights



AEROSPACE HUB PROXIMITY

Strategic location within minutes of the Boeing Everett Factory and the Paine Field (KPAE) aerospace cluster.



HIGH-VISIBILITY EXPOSURE

Prominent frontage along the SE Everett Mall Way commercial corridor with over 32,000 vehicles passing per day.



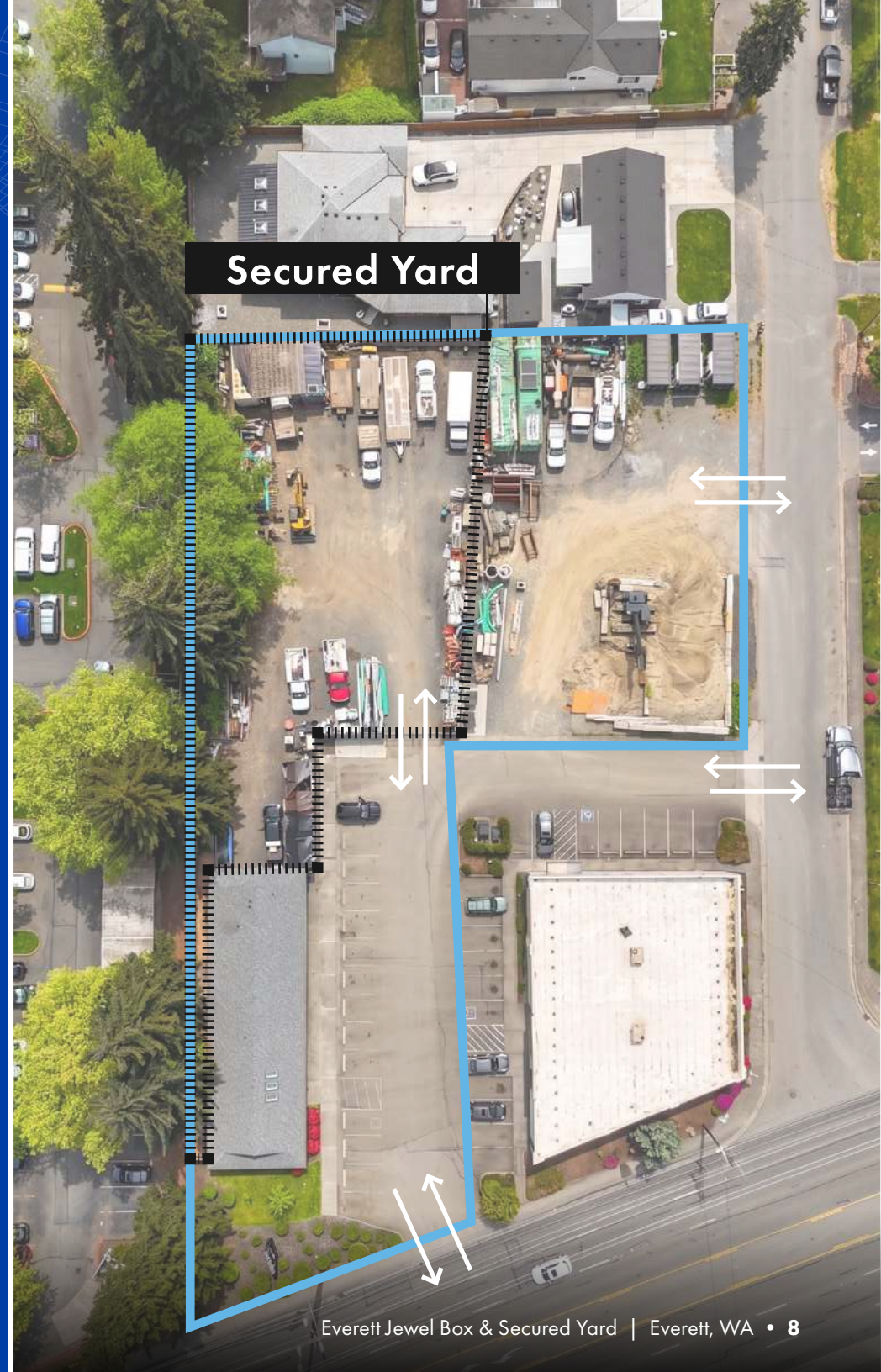
ROBUST DEMOGRAPHICS

Situated in a high-growth Snohomish County submarket with a 5-mile population exceeding 286,000.

Property Overview

118 SE Everett Mall Way
Everett, WA 98208

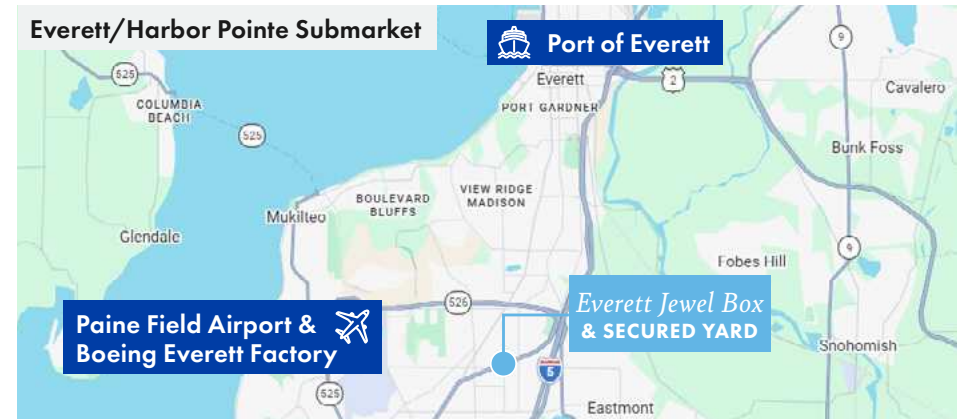
Parcel Numbers	00396900000100 00396900000400 00396900000500
Year Built /Renovated	1982 /2021
Building SF	3,000 SF
Lot Size	46,611 SF (1.07 Acres)
Zoning	MU-15 (Mixed-Use - 15 Floors)
Construction	Wood Frame
Parking	16 Stalls (5.33/1,000 SF)



Market Overview: S. Everett / Harbor Pointe

THE STRATEGIC NORTH END INDUSTRIAL HUB

The South Everett/Harbor Pointe submarket continues to outperform the broader Seattle MSA, characterized by significantly lower vacancy rates and a complete lack of new supply. While the regional market adjusts to a wave of new deliveries, the Harbor Pointe submarket remains a bastion of stability for investors, boasting zero projects under construction and a disciplined 5.48% average rent growth.



Metric	S. Everett / Harbor Pt	Seattle WA Market
Vacancy Rate	6.40%	10.00%
Inventory	27M SF	370M SF
Under Construction	0 SF	2.4M SF
Avg. Rent Growth (5-Yr)	5.48%	6.08%



Insulated from Over-Supply

With **0 SF** under construction in the submarket compared to 2.4M SF regionally, the subject property faces no immediate threat from new “shiny” competition, protecting your occupancy.



Proven Rental Resilience

A **5.48%** 5-year average rent growth demonstrates that even through various economic cycles, the Harbor Pointe area maintains strong tenant demand and pricing power.



Supply-Constrained Submarket

The 27M SF inventory is mature and land-locked. Lower vacancy (**6.40%** vs 10%) proves that tenants in this submarket stay put, leading to lower turnover costs and more predictable cash flow.

Major Nearby Developments

CATALYZING GROWTH IN THE SOUTH EVERETT CORRIDOR



EVERETT LINK EXTENSION: REGIONAL CONNECTIVITY

Investment Scope

A transformative \$6.4B – \$7.7B infrastructure project extending the light rail spine 16 miles.

Transit-Oriented Development (TOD)

Acts as a primary catalyst for high-density residential and commercial growth throughout Snohomish County.

Key Station (2037)

The SW Everett Industrial Center station is planned to serve the Boeing/Paine Field aerospace hub, directly increasing accessibility to the property's submarket.

Project Status

Currently in the environmental review phase, with the Draft EIS expected in Fall 2026.



THE HUB AT EVERETT: AMENITY & LIFESTYLE EVOLUTION

"De-Malling" Evolution

Brixton Capital is transforming the 67-acre site into a walkable, open-air lifestyle center.

Modern Design

Features exterior-facing storefronts and new drive-through access to maximize tenant visibility.

2026 Delivery

Construction is currently underway with a projected completion in Q2 2026.

Premier Anchors

High-traffic draws include Trader Joe's, Target, Burlington, and Regal Cinemas.

Strategic Access

Prime location at I-5 and Hwy 99, providing the workforce world-class amenities within minutes.

Logistical Connectivity & Drive Times



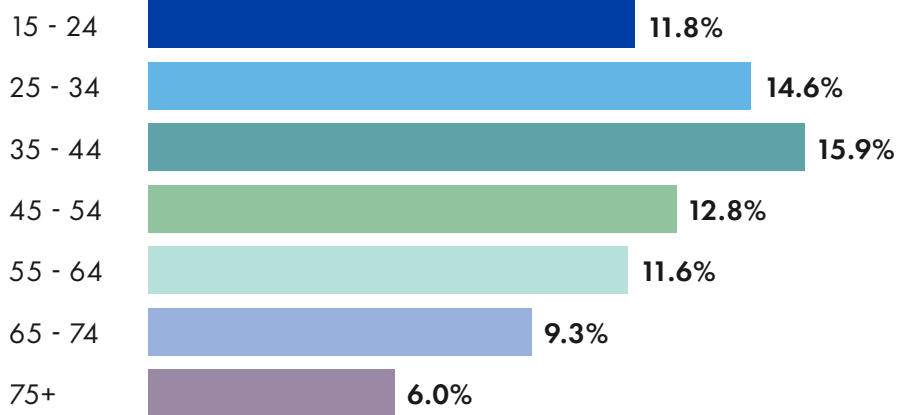
Local Demographics

IN A 5-MILE RADIUS

Population



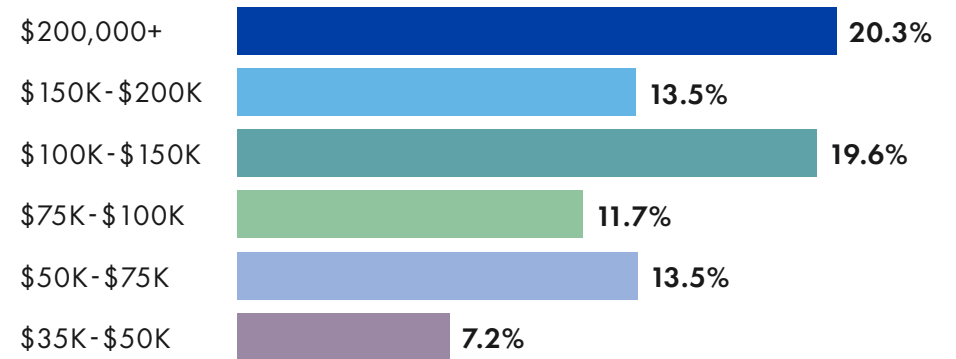
Age



Households



Income By Household



\$137,527

AVERAGE
HOUSEHOLD INCOME

\$107,140

MEDIAN
HOUSEHOLD INCOME





Northmarq

OFFERED EXCLUSIVELY BY

RJ VARA

Senior Vice President
206.584.6195
rvara@northmarq.com
License: WA 135292

JOHN MARKS

Associate Vice President
425.299.8048
jmarks@northmarq.com
License: WA 139009

DEBT & EQUITY

STUART OSWALD

Managing Director
425.974.1005
soswald@northmarq.com

JACK HINCHCLIFFE

Associate
206.743.6999
jhinchcliffe@northmarq.com
License: WA 24028466

JACK BELL

Associate Producer
425.974.1058
jbell@northmarq.com

KEVIN ADATTO

License: WA 21038208

Northmarq

130 Nickerson St, Suite 200
Seattle, WA 98109

Commercial Real Estate

Debt + Equity | Investment Sales | Loan Servicing | Fund Management

northmarq.com

This Offering Memorandum has been prepared solely for informational purposes to assist prospective investors in evaluating a potential real estate investment opportunity. Northmarq makes no guarantees, representations, or warranties of any kind, expressed or implied, regarding the information including, but not limited to, warranties of content, completeness, accuracy, reliability, and fitness for any particular purpose. This document does not constitute an offer to sell or a solicitation of an offer to buy any securities, nor shall it be construed as investment, legal, or tax advice. Prospective investors are encouraged to conduct their own independent due diligence and consult with their financial, legal, and tax advisors before making any investment decisions. The projections, assumptions, and forward-looking statements included in this memorandum are for illustrative purposes only and are subject to significant uncertainties and risks. Actual results may differ materially from those expressed or implied. Past performance is not indicative of future results. By accepting this memorandum, the recipient agrees to keep its contents confidential and not to disclose or reproduce it, in whole or in part, without prior written consent. Neither the property owner nor any of its affiliates shall be liable for any loss or damage arising from reliance on the information contained herein. The use of any graphics or logos in this memorandum is for marketing purposes only, and does not in any way imply any ownership, use, or affiliation with the real estate that is the subject of this memorandum. ANY RELIANCE ON THE CONTENT OF THIS OFFERING MEMORANDUM IS SOLELY AT YOUR OWN RISK. © 2026. All rights reserved.