

FLEX SPACE FOR LEASE



 111 W Lions Way,
Hayden, ID 83835

Offered at
\$1.20 PSF, NNN

NNN Estimated
at \$0.18 PSF

NEWER COMMERCIAL

"flex" unit which includes a private office area with upgraded lighting, electric heat and air conditioning, ADA bathroom (to be built), open insulated warehouse with gas stubbed for heat, LED lighting, 200 Amp 208 3-Phase power, (2) 10x14 foot roll up doors, windows for natural light. Ceiling height is 18ft. Abundant parking with easy access to Highway 95. Excellent location in Hayden Idaho. This is the endcap unit with visibility to Government Way. Additional custom office could be built out for an addition rent amount. Zoned Commercial.

Unit 111 is an end unit with approx. 3,750 +/- sf with 2 roll up doors.

 **CRAIG HUNTER**

208.929.2929
hunter@ccim.net



CCIMTEAM.COM

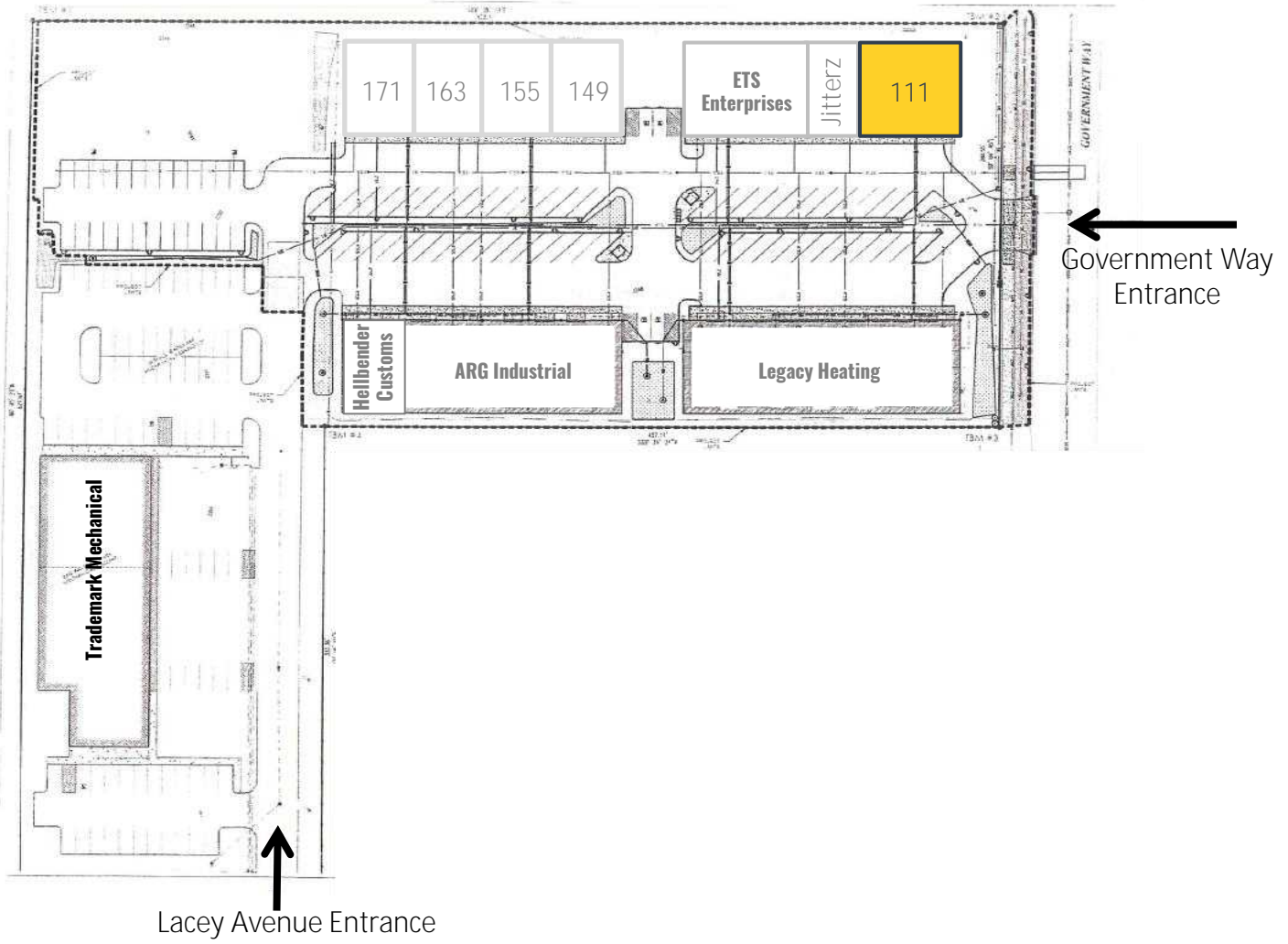


**KIEMLE
HAGOOD**

Data is deemed reliable, no warranties or representations expressed or implied. Broker not responsible for changes, errors, omissions, or prior sale without notice. All critical measurements shall be done by Lessee or Buyer.

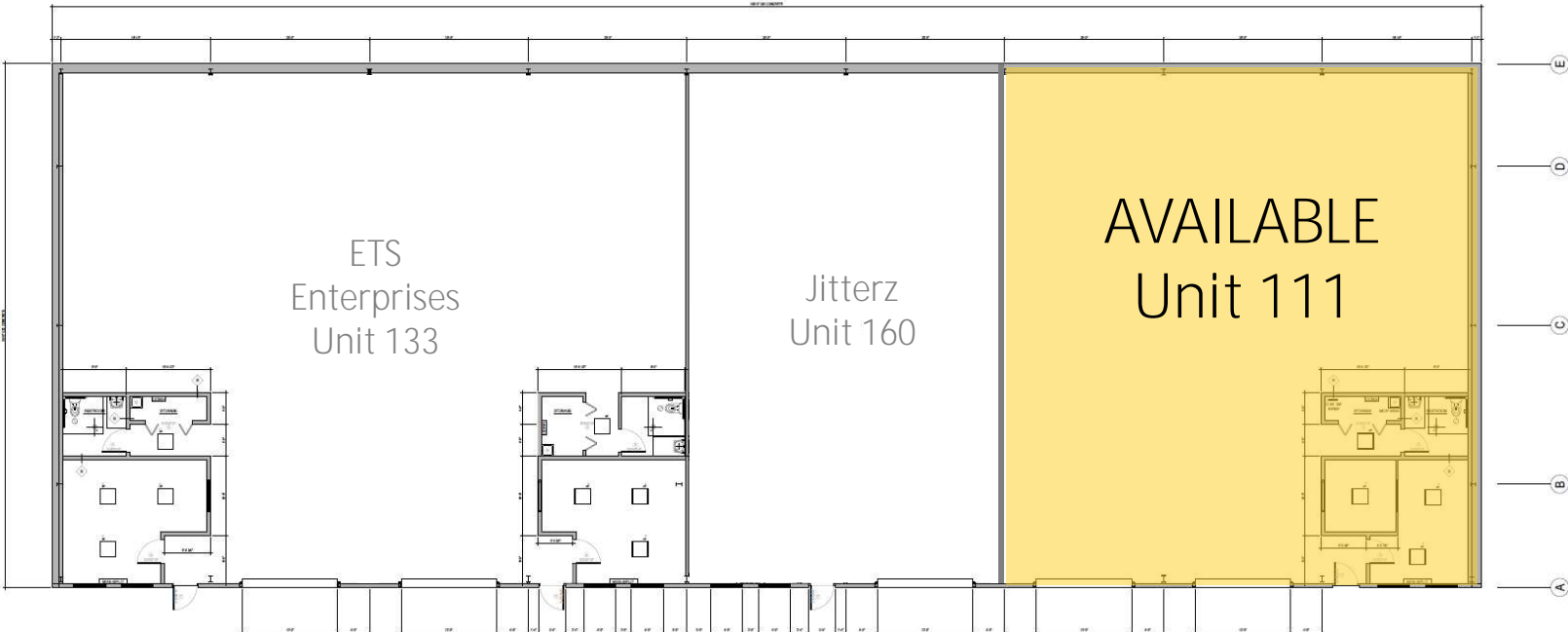
1579 Riverstone Drive, #102
Coeur d'Alene, ID 83814

W Lions Way, Hayden, ID 83835



Lacey Avenue Entrance

Government Way Entrance



W Lions Way, Hayden, ID 83835



CRAIG HUNTER

208.929.2929 hunter@ccim.net

CCIMTEAM.COM

**KIEMLE
HAGOOD**



CORE & MAIN

CONSOLIDATED SUPPLY CO.
PLUMBING • WATER WORKS • HYDRONICS

Skyline Deck & Construction

Summit Sprouts Nursery

Wyoming Avenue

Ziggys

Jiffy Lube

Habitat for Humanity
ReStore

PRECISION GUTTERS & ROOFING

Eagle Insulation



Trademark Heating & Cooling

LEGACY

Reliable Towing

40 Equipment Rentals

Lacey Avenue

Bobby Combs RV Centers

WESTERN STATES **CAT**

Government Way

Advance Marine And Industrial Coverings
Hayden Independent Auto Service

Coeur Auto Sales

PLUMBING

True North Church

Avery Estates Townhomes

MACARTHUR CO.
Building Materials • Employee Owned

Specialty

ANTHEM FRIENDS

Miles Avenue

CRAIG HUNTER

208.929.2929
hunter@ccim.net



CCIMTEAM.COM

CCIM

KIEMLE HAGOOD

Data is deemed reliable, no warranties or representations expressed or implied. Broker not responsible for changes, errors, omissions, or prior sale without notice. All critical measurements shall be done by Lessee or Buyer.

1579 Riverstone Drive, #102
Coeur d'Alene, ID 83814