



South Tacoma Way Retail Center

Fantastic storefront retail space for lease at 8610 South Tacoma Way. This end cap spot next to Bank of Hope offers ample parking, excellent visibility and easy access. The vacant space features a total of 7,250sf. Approximately 5,000sf constitutes the open floor plan showroom, two offices, and the two restrooms. The balance of the space is a warehouse with one roll up door and one person door. Tenant's signage opportunity is on the building as well as on the monument along South Tacoma Way.

Property Overview

- Retail showroom plus warehouse
- \$12/sf/yr plus NNN
- 7,250sf
- High visibility location
- Great signage opportunity

DISCLAIMER: The above information has been secured from sources believed to be reliable, however, no representations are made to its accuracy. Prospective tenants or buyers should consult their professional advisors and conduct their own independent investigation. Properties are subject to change in price and/or availability without notice.



728 Broadway 2B
Tacoma, WA 98402
johnson-commercial.com

Margot Johnson
margot@johnson-commercial.com
O: (253) 589-9999 C: (253) 209-9998

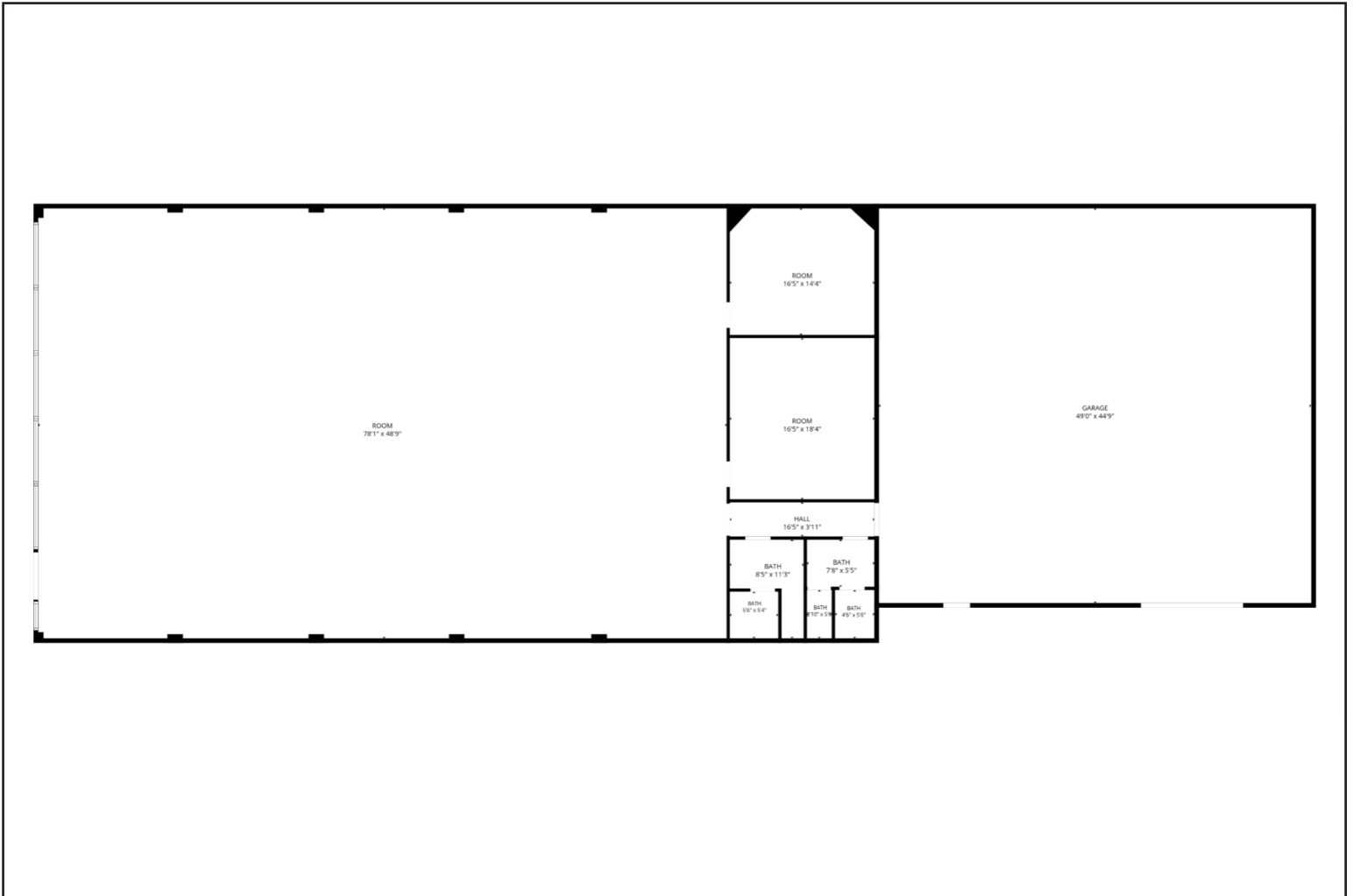
Timothy Johnson
timothy@johnson-commercial.com
O: (253) 589-9999 C: (253) 209-9999



INTERIOR PHOTOS



FLOOR PLAN



728 Broadway 2B
Tacoma, WA 98402
johnson-commercial.com

Margot Johnson
margot@johnson-commercial.com
O: (253) 589-9999 C: (253) 209-9998

Timothy Johnson
timothy@johnson-commercial.com
O: (253) 589-9999 C: (253) 209-9999