

FOR LEASE

MERIDIAN PROFESSIONAL CENTER

*Premier Class A Office &
Medical Office Space*

2910 S MERIDIAN, PUYALLUP, WA
2930 S MERIDIAN, PUYALLUP, WA

→ [VIEW PROPERTY VIDEO](#)

2930 S
MERIDIAN

2910 S
MERIDIAN

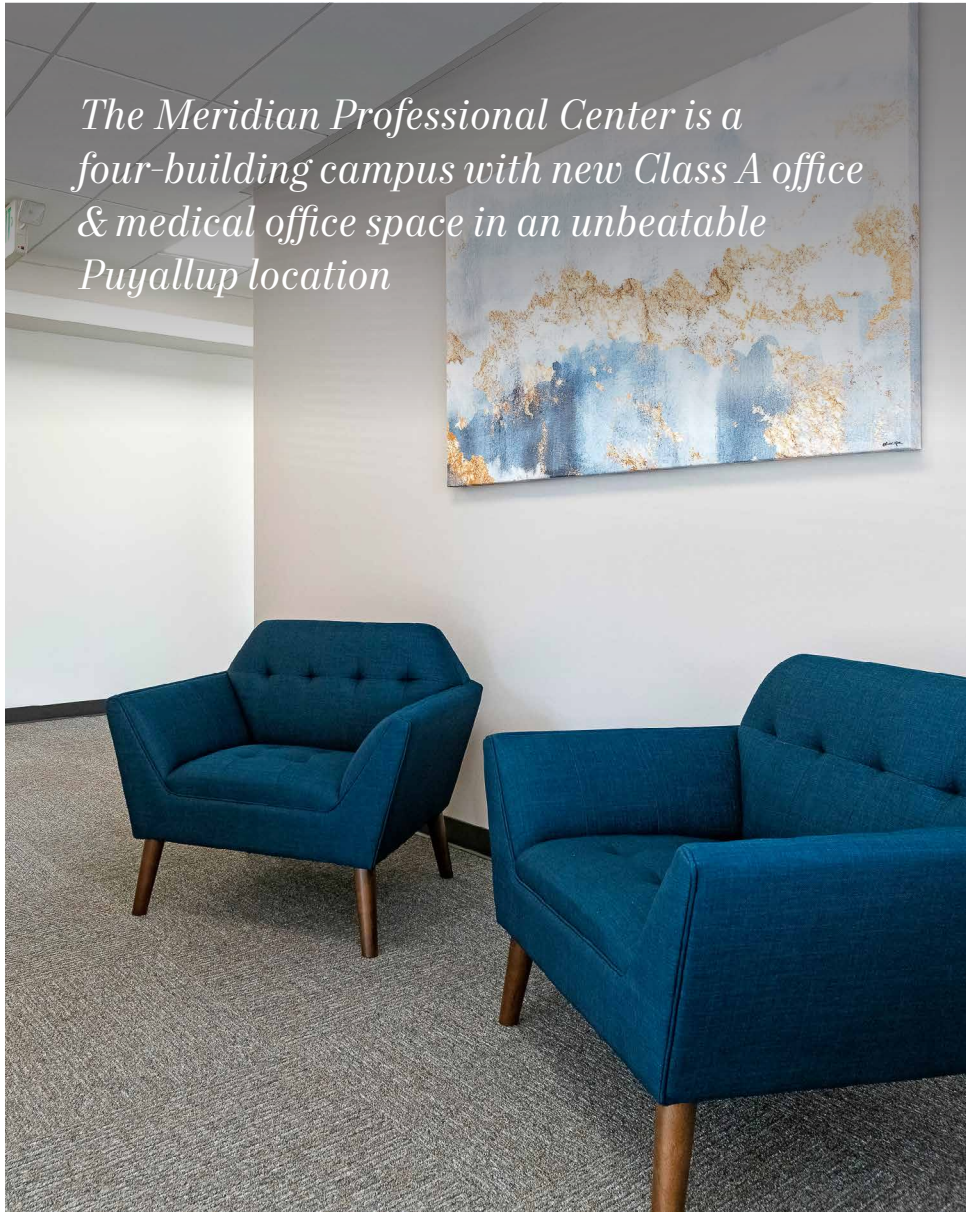
OWNED BY EXCLUSIVELY LEASED BY

KIDDER.COM

R
RUSH

km Kidder
Mathews

The Meridian Professional Center is a four-building campus with new Class A office & medical office space in an unbeatable Puyallup location



2910 S MERIDIAN, PUYALLUP, WA

SUITE 200*	4,197 SF
SUITE 220*	3,546 SF
*CONTIGUOUS	Can combine suite 200 & 220 for 7,743 SF
PARKING	Surface stalls (4.25/1000 SF)
READY TO GO	Office build-out
RENTAL RATE	Inquire for lease rate

2930 S MERIDIAN, PUYALLUP, WA

VACANT	Suite 120 - 4,215 SF
RENTAL RATE	Inquire for lease rate

→ [VIEW PROPERTY VIDEO](#)

PROPERTY FEATURES



NEW CONSTRUCTION

4 buildings of Class A medical office and office space



UNBEATABLE LOCATION

Located minutes from the Good Samaritan Hospital and major retail center



HEALTHCARE SYNERGY

Good Samaritan Hospital and the Meridian medical corridor promote referral business



ACCESS

Convenient access to Highway 512 and I-5. Direct access to public transportation and nearby amenities



PARKING

Abundant parking at 4.25/1,000 SF with easy access to and from the campus



OPPORTUNITY

Turn-key office build-out, first floor space available

→ [VIEW PROPERTY VIDEO](#)

MERIDIAN PROFESSIONAL CENTER



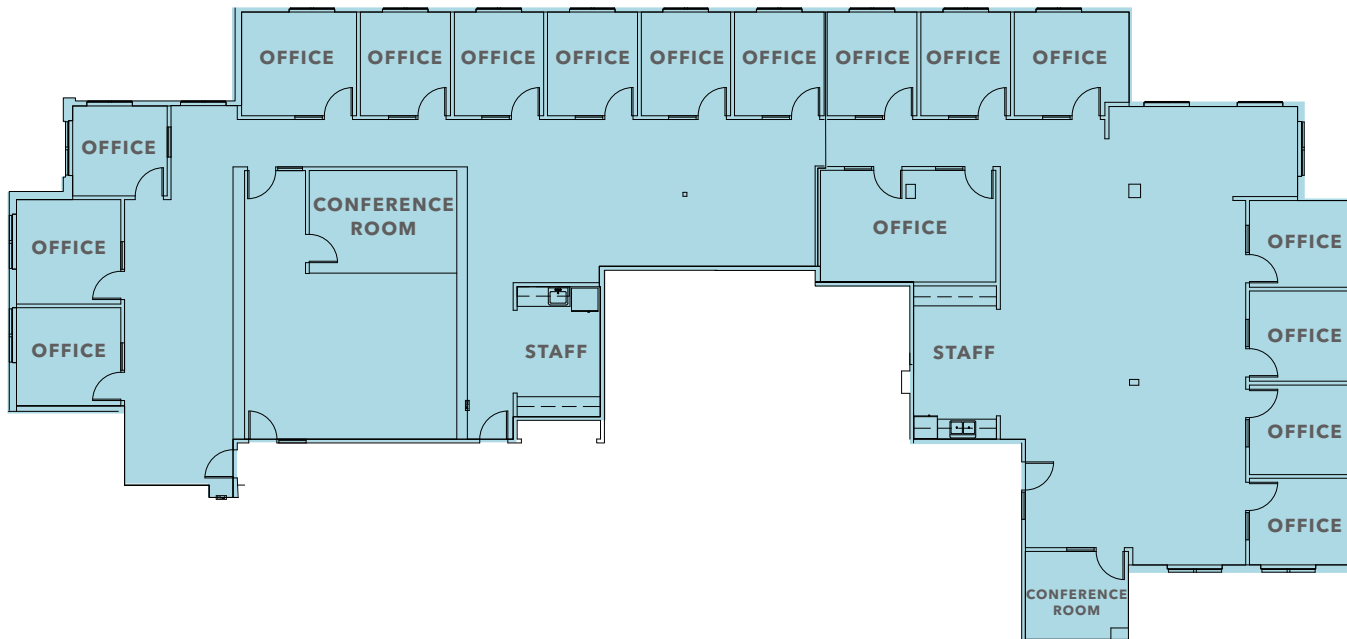
2910 MERIDIAN - COMBINED SUITE 200 & 220

7,743 SF

AVAILABLE

NOW

AVAILABLE



- 16 private offices
- 2 conference rooms
- 2 flex space

→ VIEW PROPERTY VIDEO

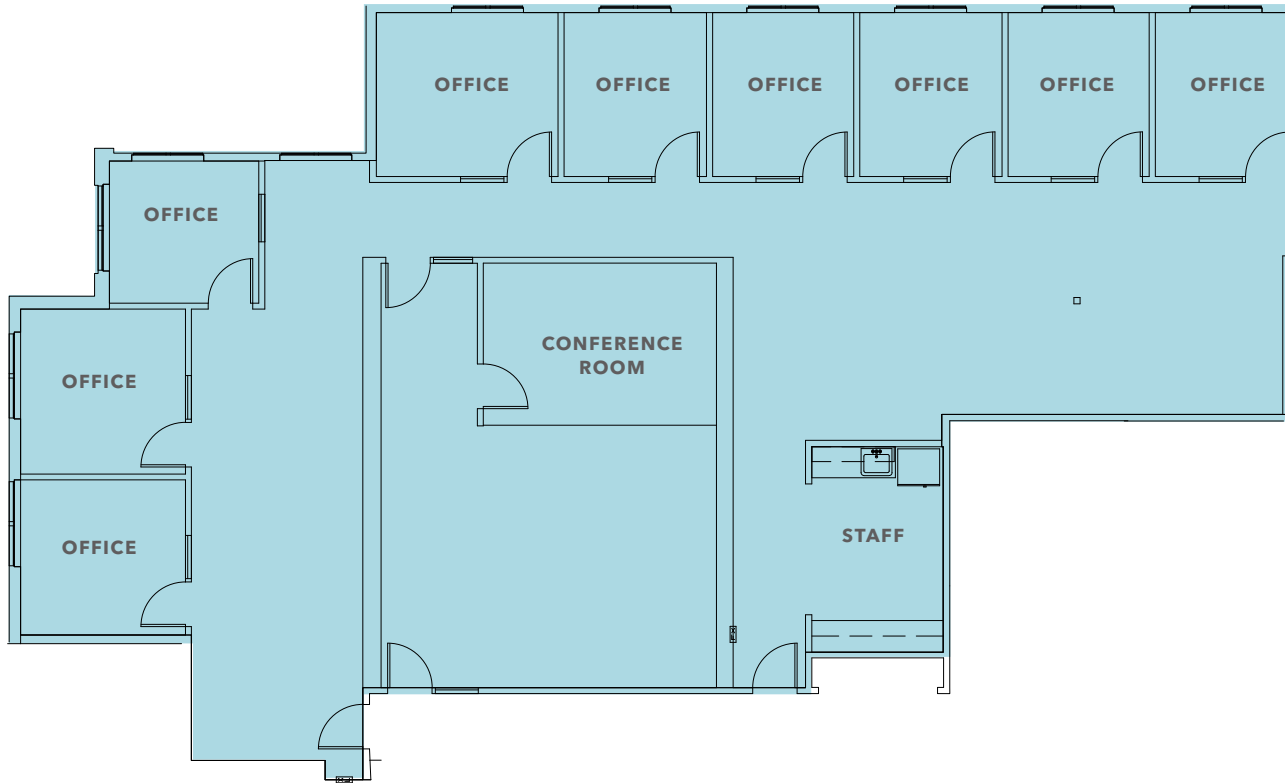
2910 MERIDIAN - SUITE 200

4,197 SF

AVAILABLE

NOW

AVAILABLE



- 9 private offices
- Large conference room
- Open work area

→ VIEW PROPERTY VIDEO

2910 MERIDIAN - SUITE 220



3,546 SF

AVAILABLE

NOW

AVAILABLE

- 8 workstations
- 7 private offices
- 1 small meeting room
- 1 flex space

→ VIEW PROPERTY VIDEO

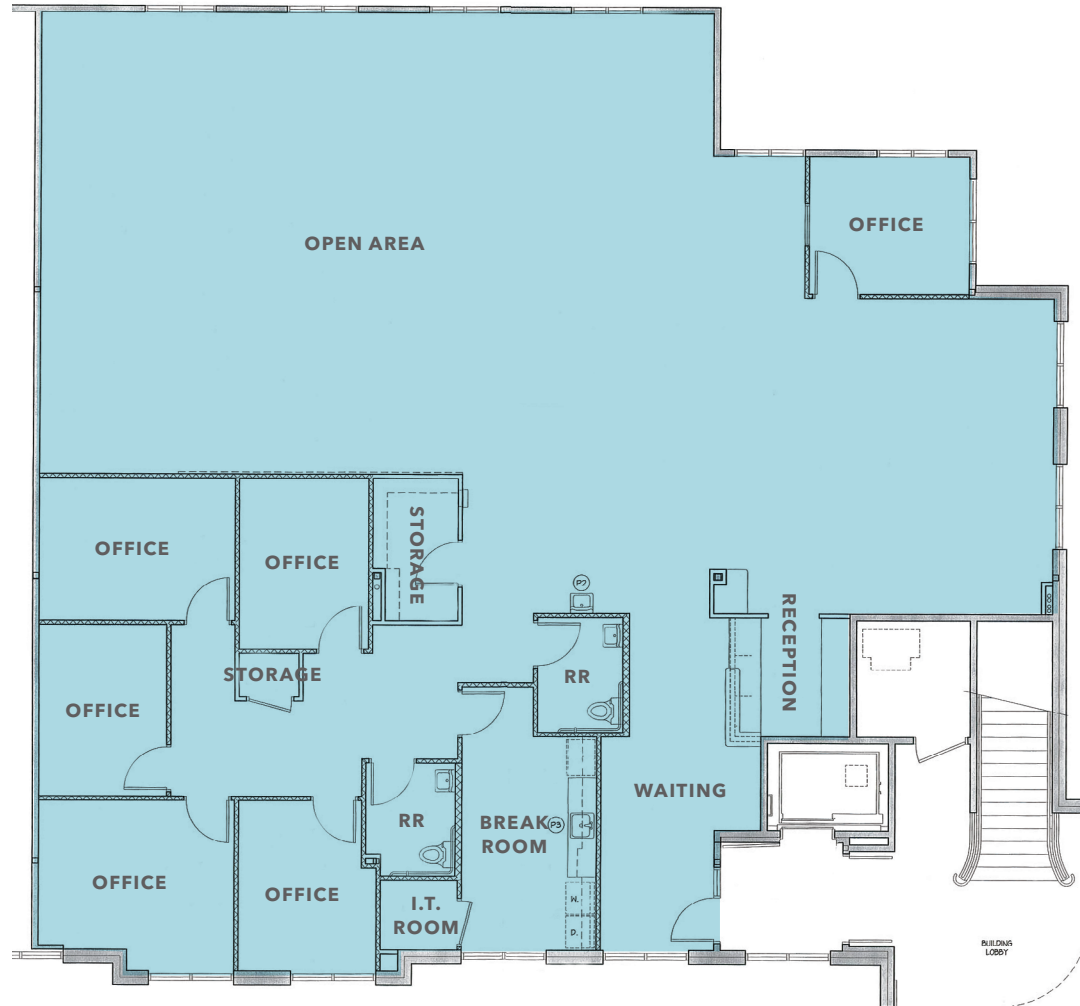
2930 MERIDIAN - SUITE 120

4,215 SF

AVAILABLE

NOW

AVAILABLE



- 6 private offices
- 2 storage rooms
- 2 restrooms
- Break room
- IT room

→ VIEW PROPERTY VIDEO

MERIDIAN PROFESSIONAL CENTER

THE LOCATION YOUR EMPLOYEES NEED AND YOUR CLIENTS DESERVE

5 MIN

DRIVE TO THE GOOD
SAMARITAN HOSPITAL

5 MIN

DRIVE TO
HIGHWAY 512

20 MIN

DRIVE TO
TACOMA CBD

45 MIN

DRIVE TO
SEATTLE CBD

→ VIEW PROPERTY VIDEO

AVAILABLE FOR LEASE



MERIDIAN PROFESSIONAL CENTER

Owned by

R
RUSH

Exclusively leased by

DREW FRAME, SIOR
Executive Vice President
253.948.7032
drew.frame@kidder.com

RYAN KERSHAW
Associate
206.949.1334
ryan.kersahw@kidder.com

VIEW
→ PROPERTY
VIDEO

KIDDER.COM

This information supplied herein is from sources we deem reliable. It is provided without any representation, warranty, or guarantee, expressed or implied as to its accuracy. Prospective Buyer or Tenant should conduct an independent investigation and verification of all matters deemed to be material, including, but not limited to, statements of income and expenses. Consult your attorney, accountant, or other professional advisor. All Kidder Mathews designs are the sole property of Kidder Mathews. Branded materials and layouts are not authorized for use by any other firm or person.

km Kidder
Mathews