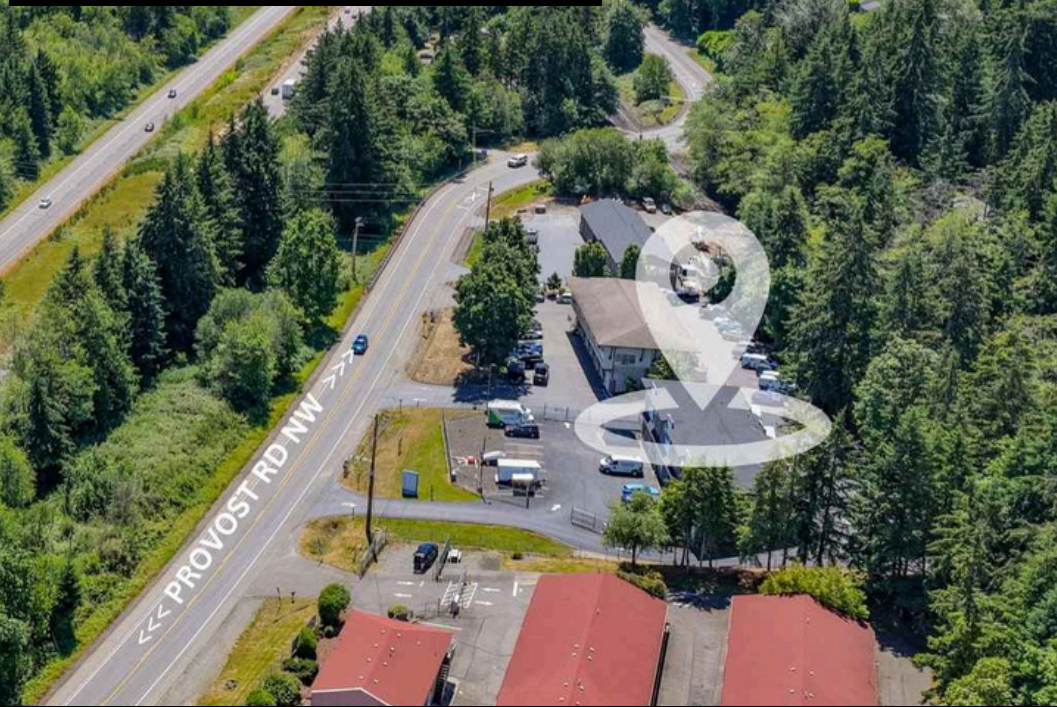


COMMERCIAL BLDG FOR LEASE 9465 PROVOST RD NW


SILVERDALE, WA 98383

SPACES FOR LEASE



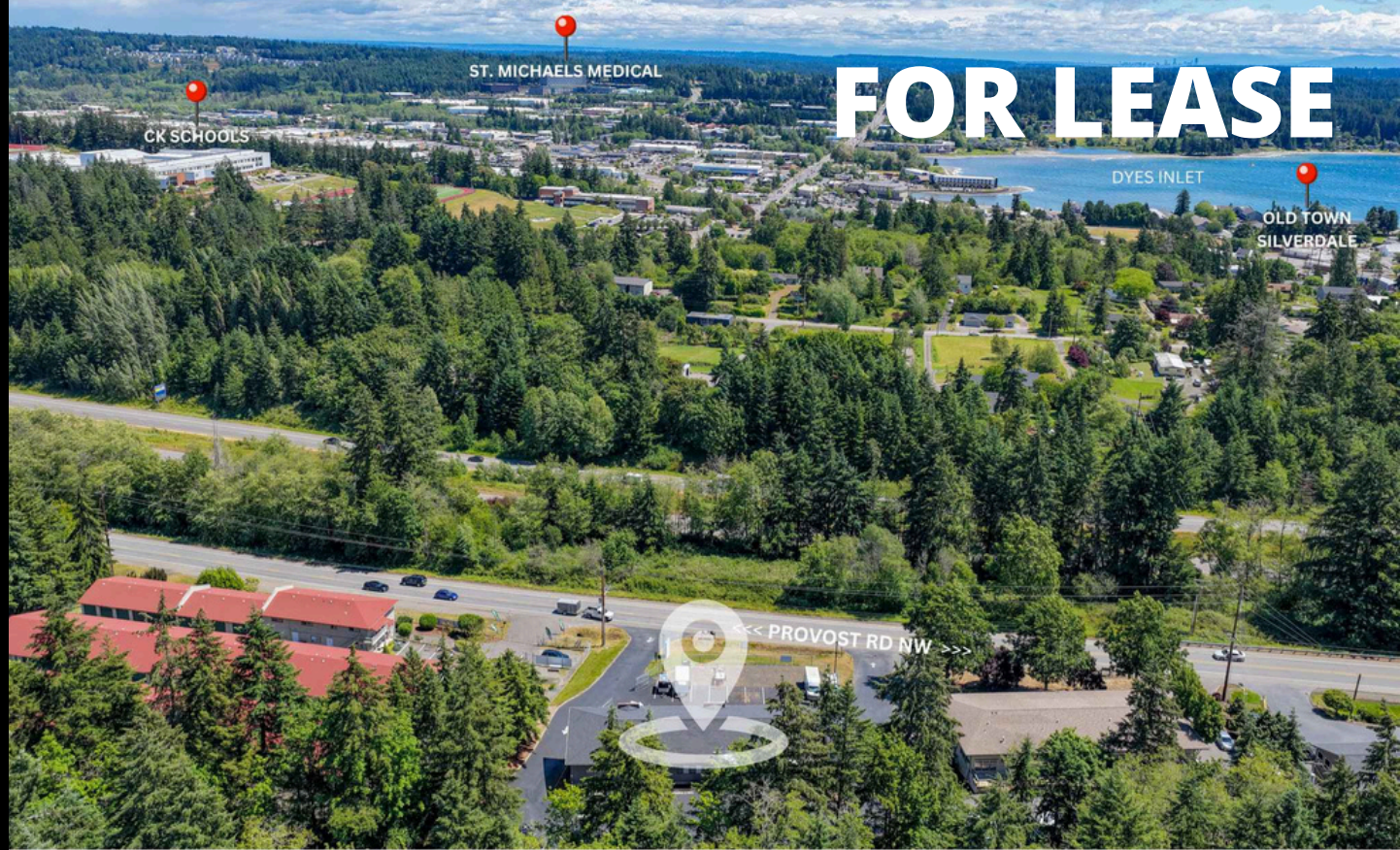
**JCM**
SILVERDALE, WA
9351 Bayshore DR NW

CALL FOR AN APPOINTMENT

 +360-620-5300

 jcmpm.com

 jeff@jcmpm.com



FOR LEASE

ABOUT THIS PROPERTY:

Office Space for Lease – 9465 Provost Rd NW, Silverdale, WA
Position your business in one of Silverdale's most accessible commercial corridors. Located just minutes from Highway 3 and Highway 303, 9465 Provost Rd NW offers convenient access for clients, employees, and business owners throughout Kitsap County. The property is centrally located near Silverdale's retail, dining, and professional services hub, as well as local Military bases including Bangor & Keyport to the North and PSNS to the South.

Available Suites

Suite #201- Private Office Space @ \$750/month + utilities (power, data, etc.)

Suite #202- Professional Office Space \$1,600/month + utilities (power, data, etc.)

Suite #203- Professional Office Space \$1,000/month + utilities (power, data, etc.)

Lease Individually or Combine All Three Suites for \$2,800/month + utilities (power, data, etc.)

- Easy access to Highway 3 and Highway 303
- Minutes from Silverdale's primary retail and business district
- Convenient access to Bremerton, Poulsbo, Bangor, and surrounding Kitsap communities
- Ample nearby dining, coffee shops, banking, and professional services
- Close to shopping, fitness centers, medical offices, and business amenities
- Professional office environment with excellent regional connectivity

Ideal For:

Professional Services • Insurance • Real Estate • Accounting • Counseling • Consulting • Remote Teams • Administrative Offices • Small Business Headquarters

FOR LEASE

203
\$1000

ROOM
19'10" x 36'9"

202
\$1600

ROOM
29'3" x 12'2"

KITCHEN
25'4" x 16'7"

ROOM
8'4" x 12'2"

ROOM
9'7" x 16'5"

ROOM
19'9" x 24'3"

201
\$750

HALL
16'1" x 3'3"

FOYER
9'4" x 5'0"

BATH
8'0" x 4'2"

BATH
7'4" x 4'2"

PLUS POWER, DATA, ETC.

***LEASED
INDIVIDUALLY
OR 3/\$2800**

TOTAL: 2361 sq. ft
FLOOR 1: 2361 sq. ft

OFFICE SPACES FOR LEASE 9465 PROVOST RD NW

SILVERDALE, WA 98383

FOR LEASE

FLOOR PLAN: 3 SPACES

- ✔ HEATING/COOLING IN ALL 3
- ✔ SHARED HALLWAY/RESTROOMS
- ✔ 2 EXTERIOR ENTRANCES
- ✔ WINDOWS & NATURAL LIGHT

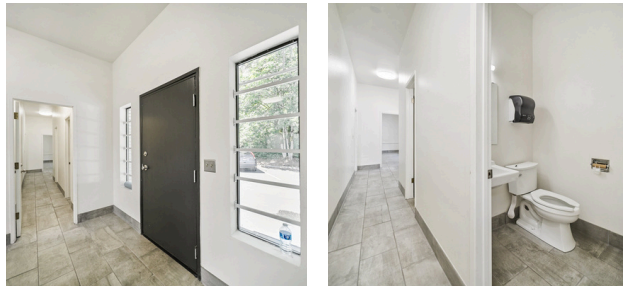
202



201



203



**JCM**
SILVERDALE, WA
9351 Bayshore DR NW

CALL FOR AN APPOINTMENT

 +360-620-5300

 jcmpm.com

 jeff@jcmpm.com

OFFICE SPACES FOR LEASE 9465 PROVOST RD NW

SILVERDALE, WA 98383



ABOUT THIS PROPERTY:

- ✔ State HWY 3 Entrances: N to Bainbridge Island (Ferry to Downtown Seattle)/Kingston (Ferry to Edmonds) & S to Bremerton (Ferry)
- ✔ Near Kitsap Mall & St Michael Medical Center
- ✔ Lots of Parking Stalls
- ✔ Located in Silverdale
- ✔ 2361 SF in 3 Leasable spaces
- ✔ High Traffic area on Provost Rd



FOR LEASE

**JCM**
SILVERDALE, WA
9351 Bayshore DR NW

CALL FOR AN APPOINTMENT



+360-620-5300



jcmpm.com



jeff@jcmpm.com