

# ALEXANDRIA CENTER® FOR ADVANCED TECHNOLOGIES CANYON PARK



ALEXANDRIA  
*Building the Future of Life-Changing Innovation™*

Bothell, WA



NEWMARK

637,346 RSF  
CLASS A OFFICE + LIFE SCIENCE  
BUSINESS PARK

# PROPERTY HIGHLIGHTS

The Alexandria Center for Advanced Technologies is the region's premier research and technology campus, located in the rapidly growing life science hub of Bothell, Washington.

Surrounded by nearly 3 million square feet of biotechnology and life science-related companies, the center provides a strategic location for innovation. Tenants benefit from nearby affordable housing, adjacent retail, and favorable commute patterns via immediate access to both I-405 and SR-527.



637,346 SF of flexible office, warehouse and lab spaces in 17 buildings



Flexible floorplates



Abundant surface parking



Several fiber optics providers



North Creek Trail circles the park



Grade level loading



A wide variety of restaurants and service amenities nearby



Tenant amenity center coming soon

# CORPORATE NEIGHBORS



**Cepheid**  
A better way.

A B C

M

J

PS

PN

E

L

AGC Biologics

AGC Biologics

AGC Biologics

F

H

G

LOCKHEED MARTIN

Lyell

Lyell

Pfizer

Pfizer

Pfizer

FUJIFILM  
SONOSITE

Pfizer

SYSTEMIMMUNE

K2

H2

Pfizer

L2

J2

Pfizer

# AT THE CENTER OF MULTIPLE AMENITY HUBS

## Restaurants, Cafes & Bars

- Russell's Restaurant & Loft
- Lori's Deli & Espresso
- Starbucks
- Potbelly Sandwich Shop
- Menchie's Frozen Yogurt
- Sushi Chinoise
- Beardslee Public House
- The Den Coffee Shop
- Common Grounds Coffee Shop

## Shops & Other Amenities

- Holiday Inn & Suites
- Residence Inn by Marriott
- Country Inn & Suites
- The Home Depot
- 24 Hour Fitness
- Safeway
- QFC
- USPS

## THRASHERS CORNER - 3 minutes

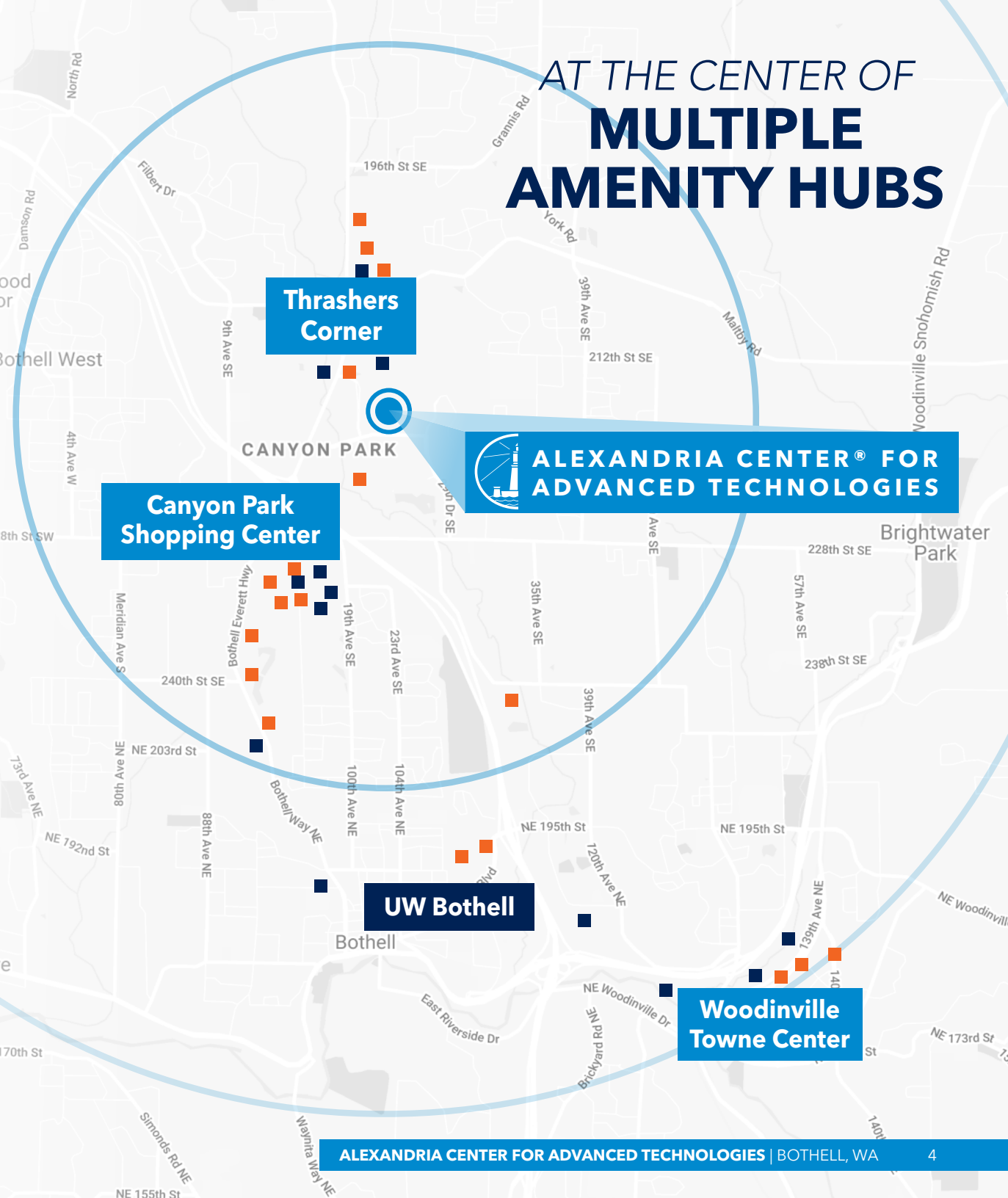
- Original Pancake House
- The Rock Wood Fired Pizza
- Dairy Queen Grill & Chill
- Red Robin Gourmet Burgers
- Royal Biryani House
- Samburna Indian
- Sushi Hana
- Safeway
- Walgreens
- The UPS Store
- International Market
- Bank of America
- KeyBank

## CANYON PARK SHOPPING CENTER - 5 minutes

- Outback Steakhouse
- Bonefish Grill
- Crystal Creek Cafe
- Arby's
- 90 Bangkok Cafe
- Taco Time
- Chick-fil-A
- Big Fish Sushi
- MOD Pizza
- Zeeks Pizza
- Namasthe Indian Restaurant
- Applebee's Grill & Bar
- Gyro Stop
- Imperial Wok
- Bartell Drugs
- Rite Aid
- FedEx
- Bank of America
- Chase Bank
- Western Union
- Wells Fargo Bank
- Washington Federal Bank
- Jacksons Food Stores
- QFC
- PCC Community Markets
- Comfort Inn & Suites
- Holiday Inn Express
- Hilton Garden Inn

## WOODINVILLE TOWNE CENTER - 10 minutes

- Teriyaki Bowl
- Hacienda Guadalajara
- Seattle Cinnamon Roll
- Pho 175
- Tokyo Japanese Steakhouse
- Racha Thai Cuisine
- Zeeks Pizza
- Rocky Pond Winery
- Truth Teller
- Big Fish Grill
- Panera Bread
- Hapa Food Company
- Ezell's Famous Chicken
- Plaza Santa Fe
- Teddy's Bigger Burgers
- Akane Ramen
- Rooney's Food and Spirits
- Woodinville Bagel Bakery
- Topsy Cow
- Matsu Teriyaki
- Chan's Place
- BECU Credit Union
- First National Northwest Bank
- Banner Bank
- US Bank
- Target
- Cost Plus World Market
- Woodinville Farmers Market
- Barnes & Noble
- Ross Dress for Less
- Haggen
- FedEx
- Old Navy
- HomeGoods
- T.J. Maxx
- Value Village
- O'Reilly Auto Parts
- The UPS Store
- Bright Now! Dental
- AMC Woodinville
- Sport Clips Haircuts
- USPS



**ALEXANDRIA CENTER® FOR  
ADVANCED TECHNOLOGIES**

# AVAILABILITIES

BUILDING E				
Suite	Total SF	Office SF	Warehouse SF	Lab SF
Suite 103	10,338	7,984	2,354	
Suite 110	3,576	3,576		
Suite 111	1,487	1,487		

BUILDING F				
Suite	Total SF	Office SF	Warehouse SF	Lab SF
Suite 113	2,465	1,610	855	

BUILDING G				
Suite	Total SF	Office SF	Warehouse SF	Lab SF
Suite 121	761	761		
Suite 122	766	766		
Suite 123	2,073	789	1,284	
Suite 139	2,461	2,461		
Suites 121+122+123	3,600	2,316	1,284	

BUILDING H				
Suite	Total SF	Office SF	Warehouse SF	Lab SF
Suite 150	3,755	3,055	700	
Suite 164	3,390	1,441	1,949	

BUILDING J				
Suite	Total SF	Office SF	Warehouse SF	Lab SF
Suite 101	8,948	8,948		

BUILDING L2				
Suite	Total SF	Office SF	Warehouse SF	Lab SF
Suite 101	10,086	7,790	2,296	
Suite 202	3,198	3,198		
Suite 207	991	991		
Suite 214	1,877	1,877		



**ALEXANDRIA CENTER® FOR  
ADVANCED TECHNOLOGIES**



# INTERACTIVE CAMPUS MAP

CLICK A BUILDING TO NAVIGATE AVAILABLE FLOOR PLANS  
BEST EXPERIENCED IN ADOBE ACROBAT ON PC



# BUILDING E, FLOOR 1 FLOORPLAN

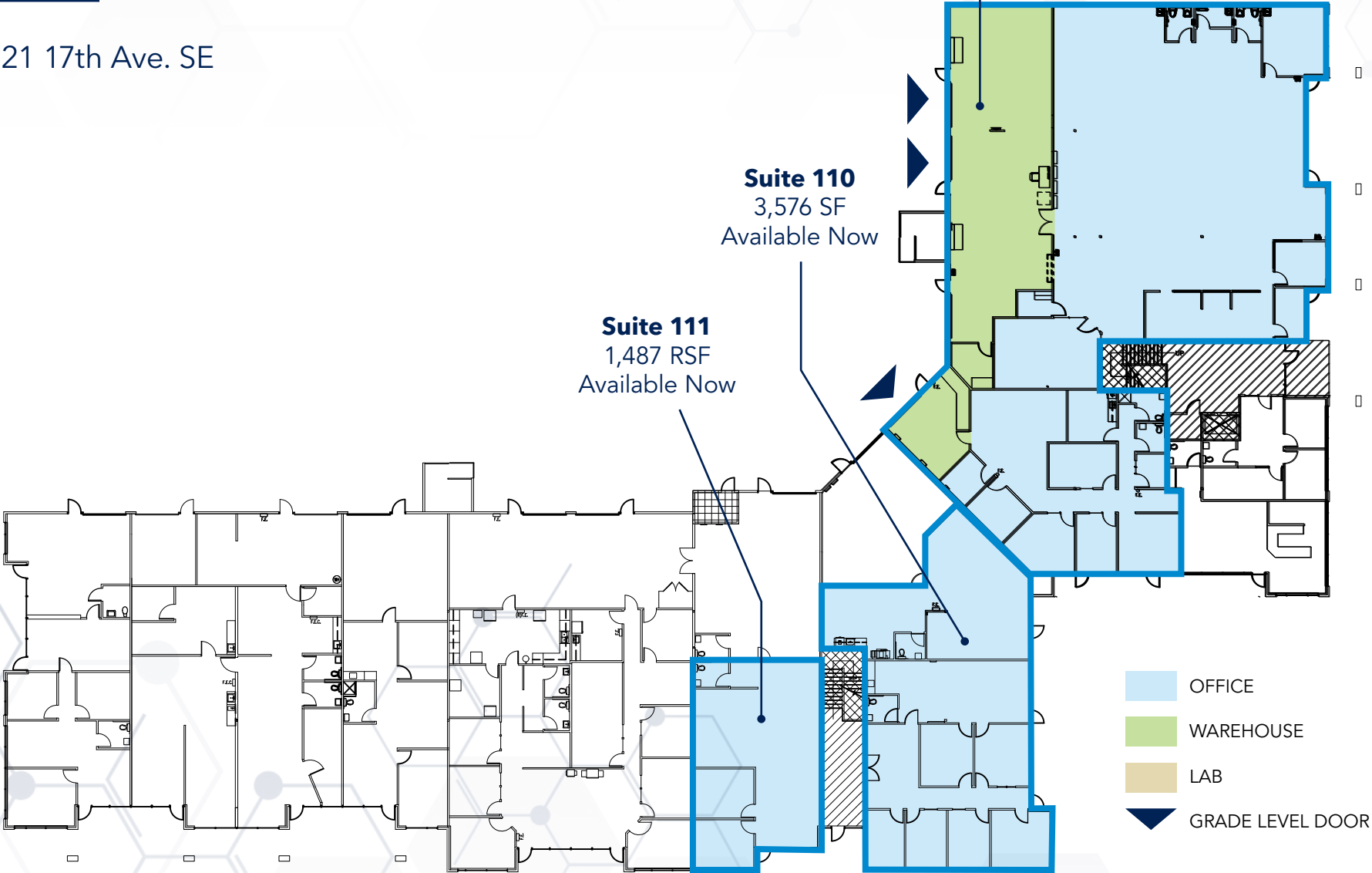
22121 17th Ave. SE

**Suite 103**  
10,338 SF  
Office: 7,984 SF  
Warehouse: 2,354 SF  
Available Now

 SUITE 103 VIRTUAL TOUR

**Suite 110**  
3,576 SF  
Available Now

**Suite 111**  
1,487 RSF  
Available Now



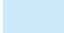



# BUILDING E, SUITE 103

## CONCEPT LAB FLOORPLAN

**10,338 SF**

Available Now

22121 17th Ave. SE

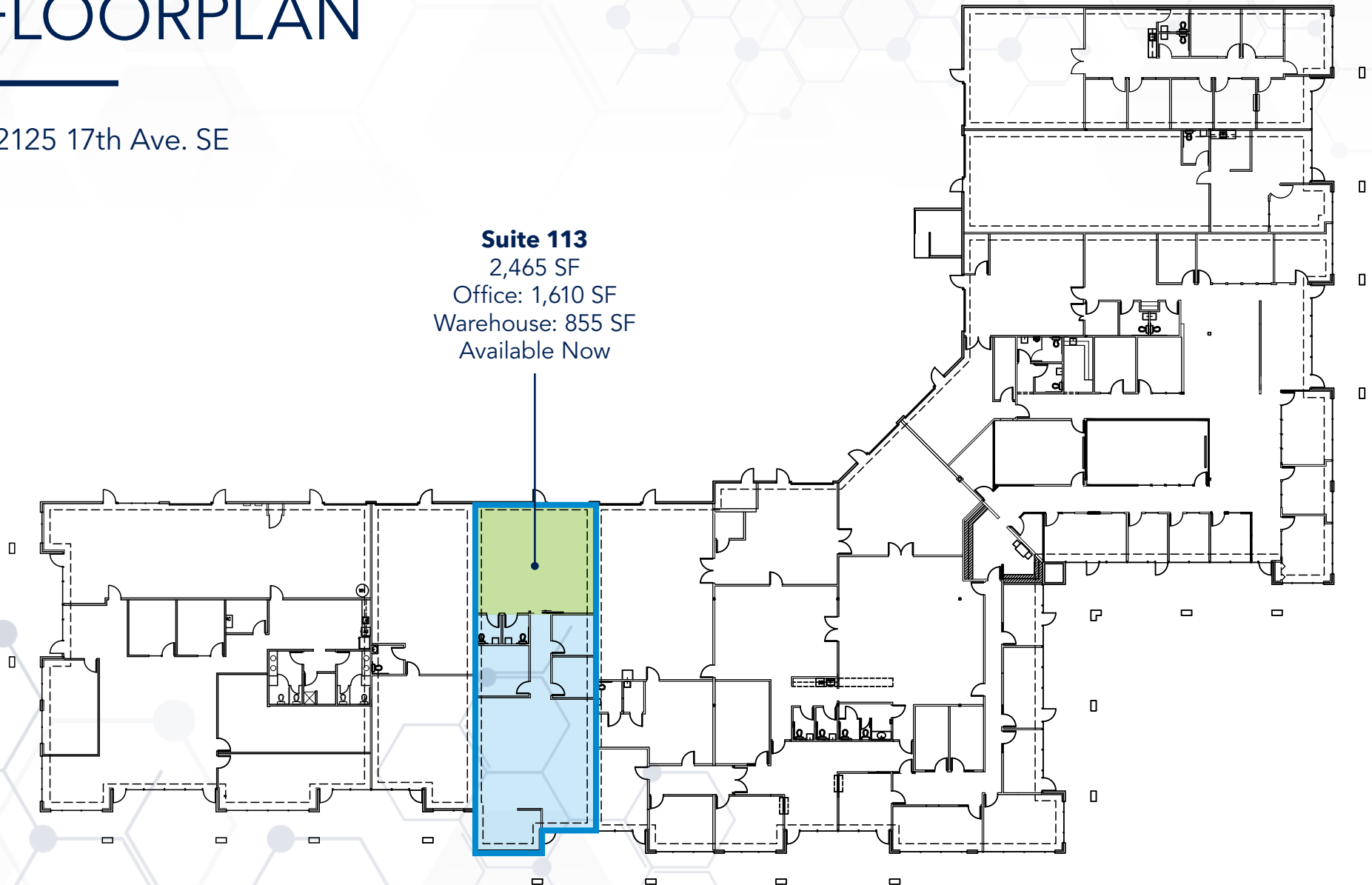
-  OFFICE
-  SHIPPING/RECEIVING
-  LAB
-  GRADE LEVEL DOOR



# BUILDING F, FLOOR 1 FLOORPLAN

22125 17th Ave. SE

**Suite 113**  
2,465 SF  
Office: 1,610 SF  
Warehouse: 855 SF  
Available Now



# BUILDING G, FLOOR 1 FLOORPLAN

**Suite 121 | 761 SF**

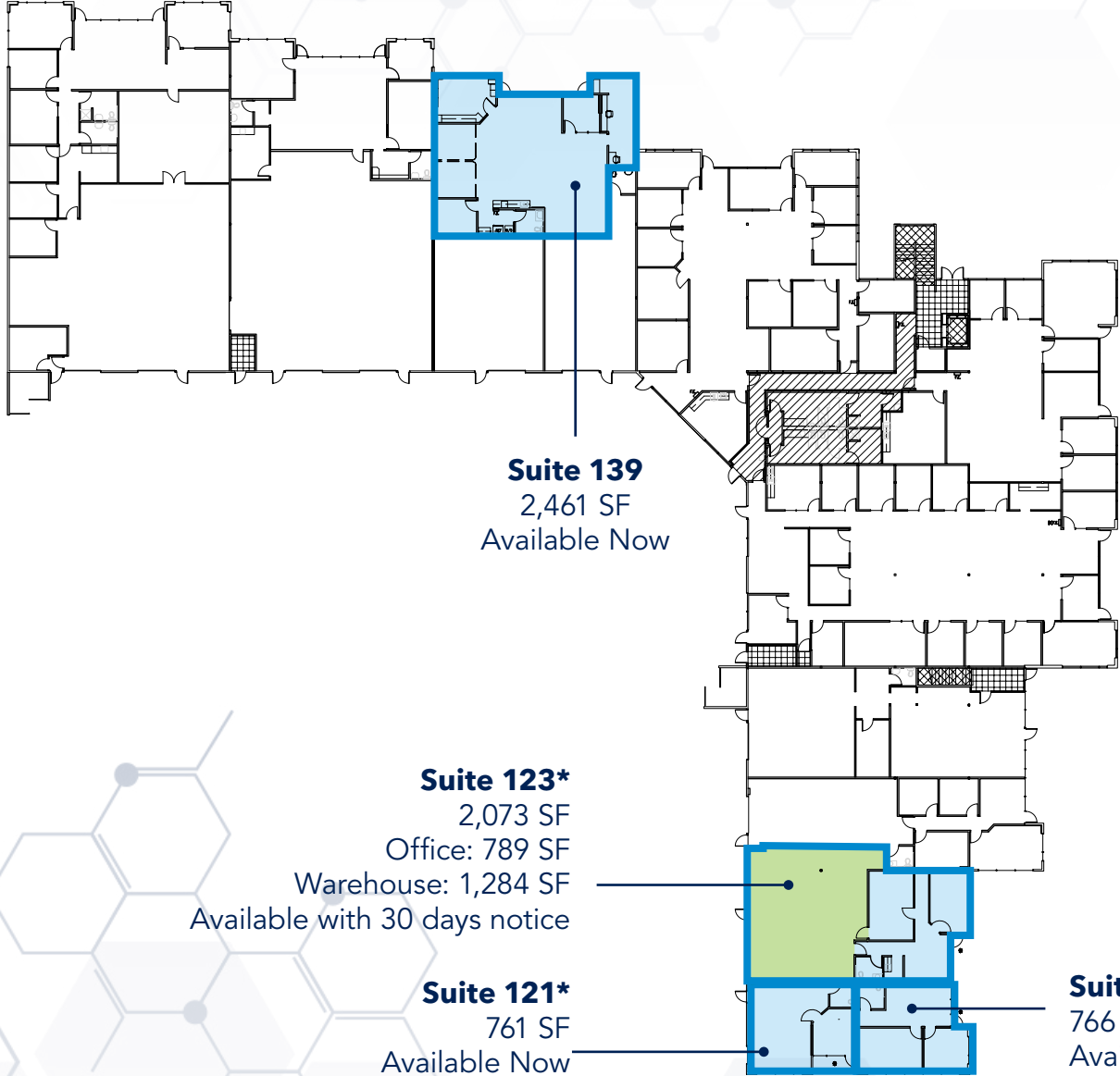
**Suite 122 | 766 SF**

**Suite 123 | 2,073 SF**

**Suite 139 | 2,461 SF**

22118 20th Ave. SE

- OFFICE
- WAREHOUSE
- GRADE LEVEL DOOR



**Suite 139**  
2,461 SF  
Available Now

**Suite 123\***  
2,073 SF  
Office: 789 SF  
Warehouse: 1,284 SF  
Available with 30 days notice

**Suite 121\***  
761 SF  
Available Now

**Suite 122\***  
766 SF  
Available Now

\*Suites 121, 122 & 123 can be combined for a total of 3,600 SF

# BUILDING H, FLOOR 1 FLOORPLAN

**Suite 150 | 3,755 SF**

**Suite 164 | 3,390 SF**

22122 20th Ave. SE

- OFFICE
- SHIPPING/RECEIVING
- LAB
- GRADE LEVEL DOOR



**Suite 150**  
3,755 SF  
Office: 3,055 SF  
Warehouse: 700 SF  
Available Now

**Suite 164**  
3,390 SF  
Office: 1,441 SF  
Warehouse: 1,949 SF  
Available Now

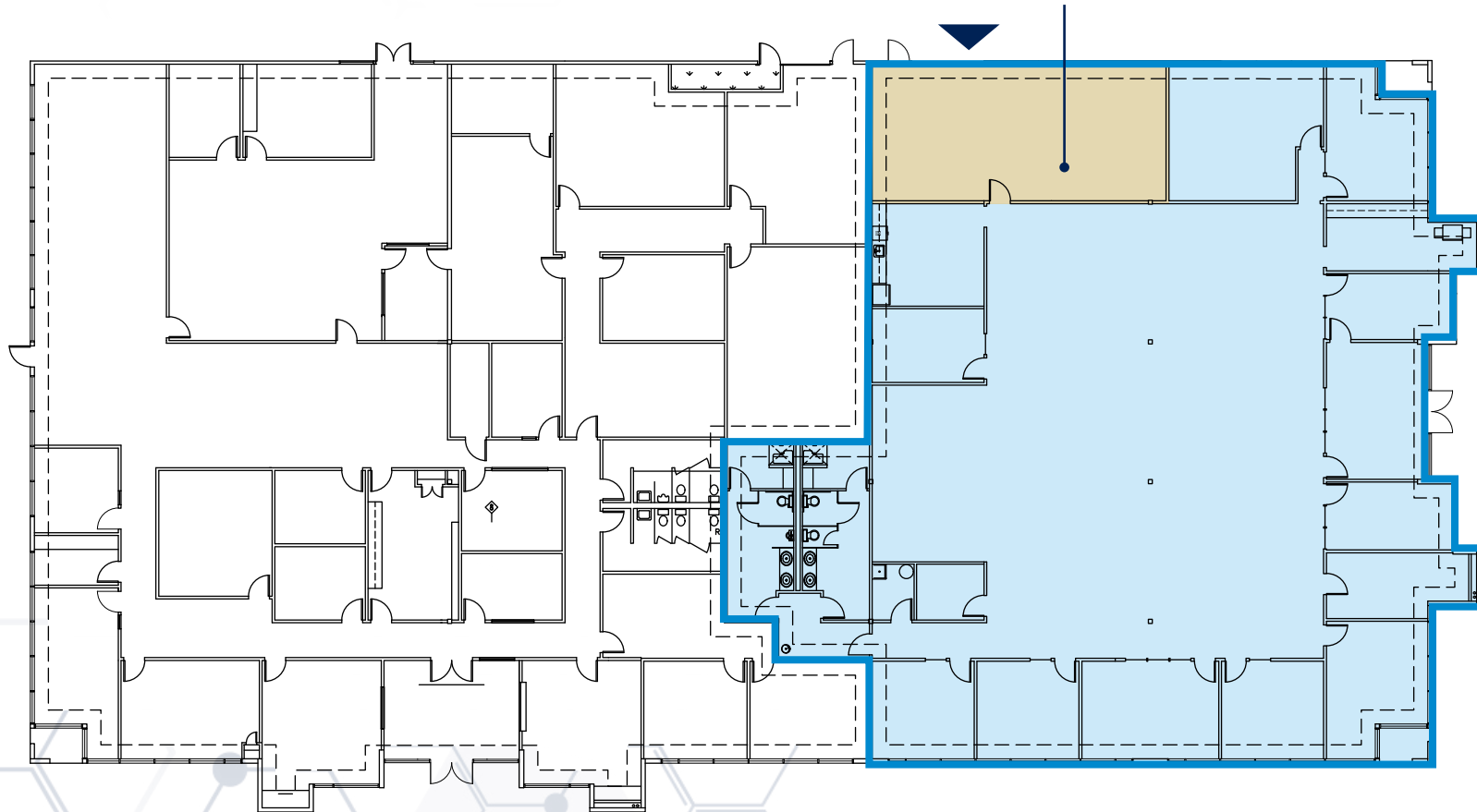
# BUILDING J, FLOOR 1 FLOORPLAN

- OFFICE
- SHIPPING/RECEIVING
- LAB
- GRADE LEVEL DOOR

**Suite 101 | 8,948 SF**

1930 220th St. SE

**Suite 101**  
8,948 SF RSF  
Available Now



# BUILDING L2, FLOOR 1

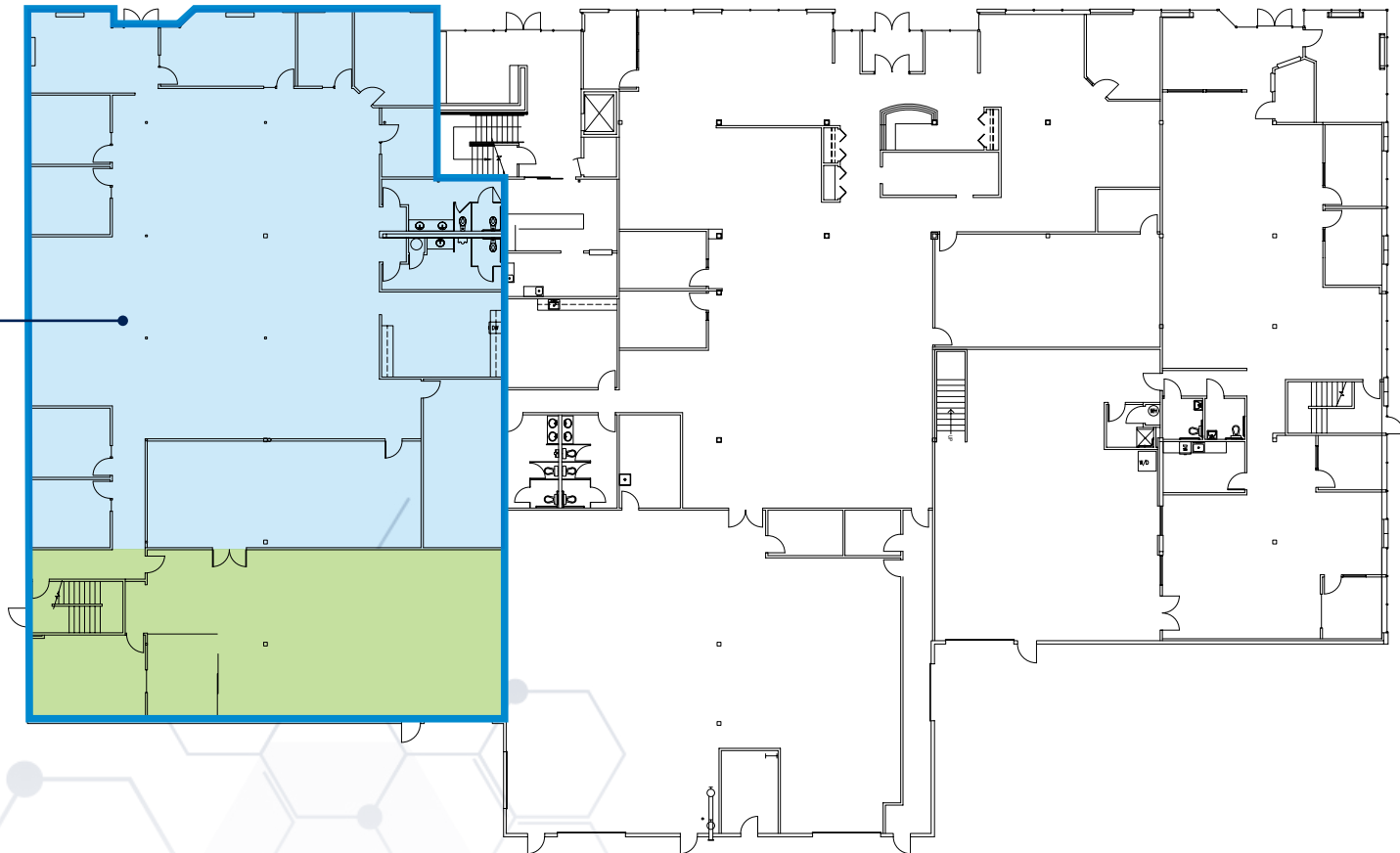
## FLOORPLAN

**Suite 101 | 10,086 RSF**

22522 29th Drive SE

OFFICE  
WAREHOUSE

**Suite 101**  
10,086 SF  
Office: 7,790 SF  
Warehouse: 2,296 SF  
Available 6/1/2027

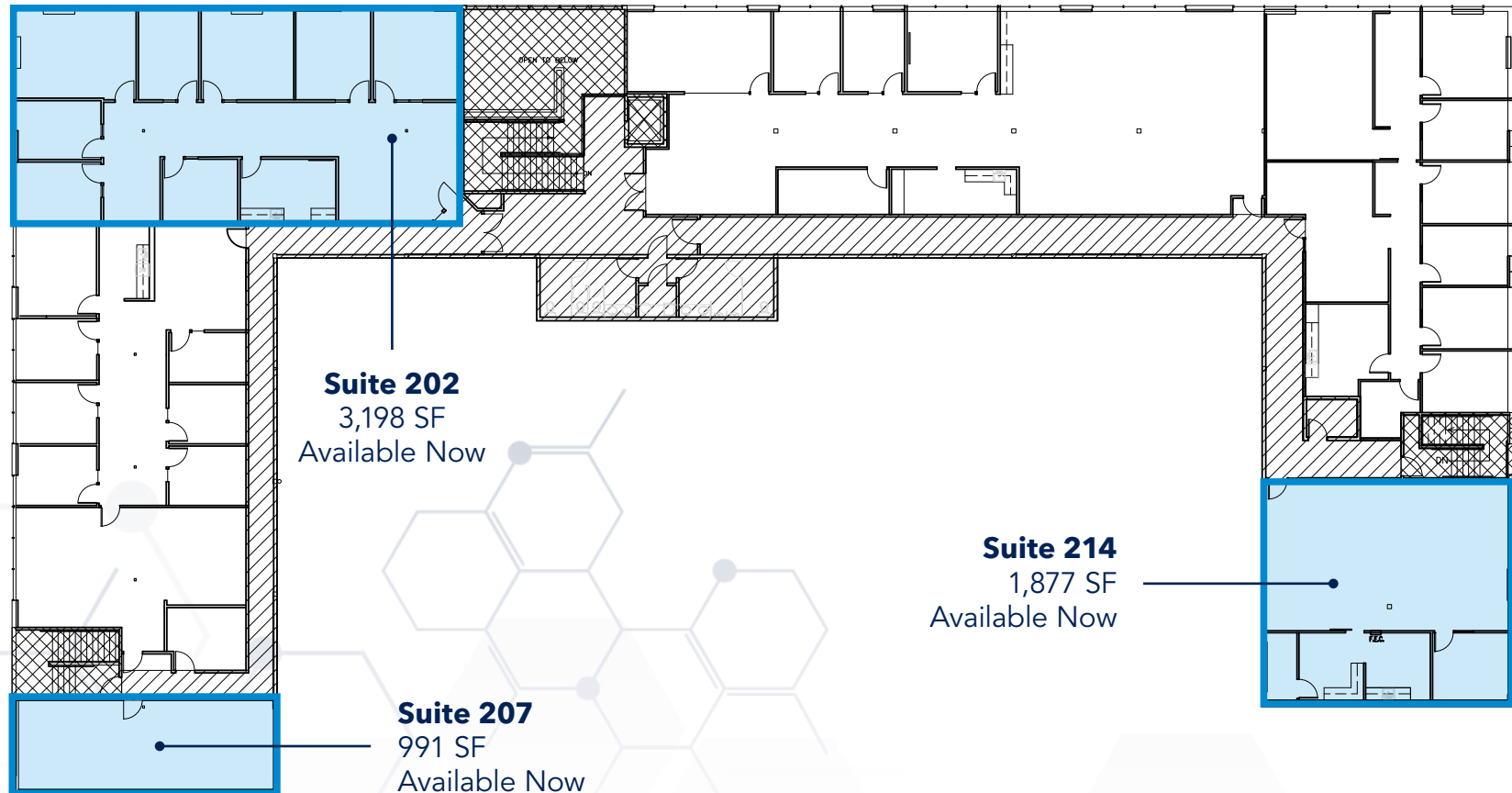


# BUILDING L2, FLOOR 2

## FLOORPLAN

Available Now | 22522 29th Drive SE

 SUITE 202 VIRTUAL TOUR





## ALEXANDRIA CENTER® FOR ADVANCED TECHNOLOGIES

Alexandria Real Estate Equities, Inc. (NYSE: ARE), an S&P 500® company, is a best-in-class, mission-driven life science REIT making a positive and lasting impact on the world. As the pioneer of the life science real estate niche since its founding in 1994, Alexandria is the preeminent and longest-tenured owner, operator, and developer of collaborative life science mega campuses in AAA innovation cluster locations, including Greater Boston, the San Francisco Bay Area, San Diego, Seattle, Maryland, Research Triangle, and New York City. Alexandria has a longstanding and proven track record of developing Class A/A+ properties clustered in life science mega campuses that provide our innovative tenants with highly dynamic and collaborative environments that enhance their ability to successfully recruit and retain world-class talent and inspire productivity, efficiency, creativity, and success. For additional information on Alexandria, please visit [www.are.com](http://www.are.com).



**JOE LYNCH**

Executive Managing Director  
425-362-1399  
joe.lynch@nmrk.com

**DAN HARDEN**

Senior Managing Director  
425-362-1393  
dan.harden@nmrk.com



**ALEXANDRIA**  
*Building the Future of Life-Changing Innovation™*

**NEWMARK**

Copyright © Newmark 2024 | **Alexandria Center® for Advanced Technologies** | All Rights Reserved

The distributor of this communication is performing acts for which a real estate license is required. The information contained herein has been obtained from sources deemed reliable but has not been verified and no guarantee, warranty or representation, either express or implied, is made with respect to such information. Terms of sale or lease and availability are subject to change or withdrawal without notice. 8683199291 4/26