

# 38629 AUBURN ENUMCLAW RD SE

FOR SALE: \$1,200,000

AUBURN, WA 98092



## SALE INFORMATION

### Parcel A

- **Available Space:** 9,718 SF
- **Office Area:** 1,164 SF
- **Land Area:** 88,216 SF (±2.03 Acres)
- **Year Built:** 1950

### Parcel B — Additional Site Area

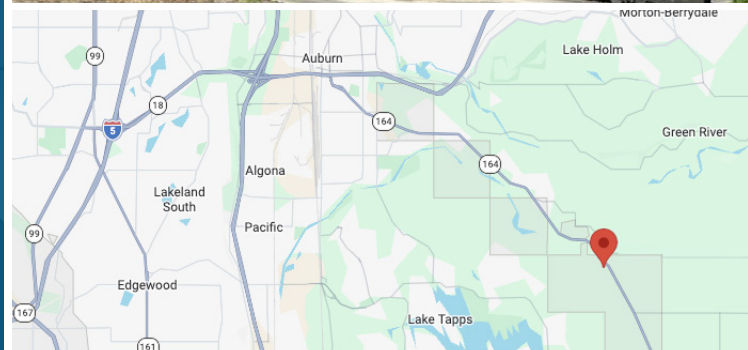
- **Land Area:** 54,829 SF (±1.26 Acres)
- **Site Improvements:** Manufacturing Building + RV Pad

### Combined Site

- **Total Land Area:** ±3.28 Acres
- **Zoning:** MIT

### Sale Price

- **\$1,200,000**



**THERON MEIER**  
253.988.2649  
tmeier@neilwalter.com

**SHANE CROOK**  
206.579.1149  
scrook@neilwalter.com

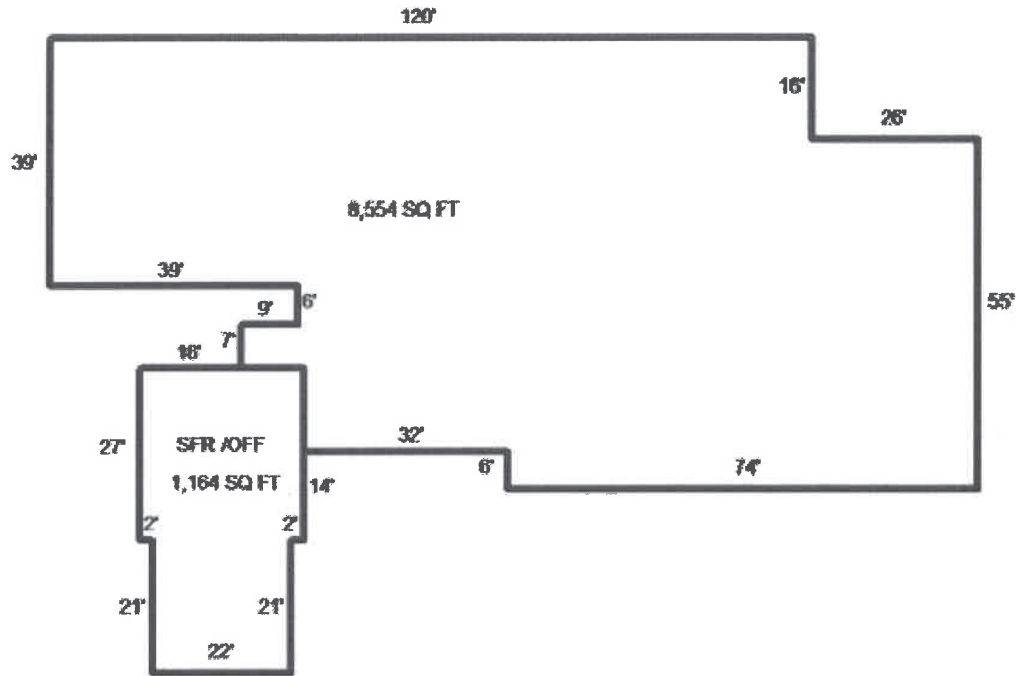
All information references in this document are approximate. The information contained herein is contained from sources deemed reliable. It is provided without representation, warranty, or guarantee, expressed or implied as to accuracy. Prospective buyer or tenant should conduct its own independent investigation relating to the property, government codes and regulations, allowed uses, and all other matters, regardless of whether they are referred to or contained in this document.

# 38629 AUBURN ENUMCLAW RD SE

AUBURN, WA 98092



## FLOOR PLAN



## AERIAL



**THERON MEIER**  
253.988.2649  
tmeier@neilwalter.com

**SHANE CROOK**  
206.579.1149  
scrook@neilwalter.com

1940 East D St, #100  
Tacoma, WA 98421  
253.779.8400  
www.neilwalter.com

All information references in this document are approximate. The information contained herein is contained from sources deemed reliable. It is provided without representation, warranty, or guarantee, expressed or implied as to accuracy. Prospective buyer or tenant should conduct its own independent investigation relating to the property, government codes and regulations, allowed uses, and all other matters, regardless of whether they are referred to or contained in this document.