

ONE OF IDAHO'S **BEST LOCATED** SHOPPING AREAS



WESTPARK TOWNE PLAZA **FOR LEASE**

633 N Milwaukee Street, Boise, ID
SF AVAILABLE: 1,395 SF - 7,083 SF
BUILDING SIZE: 239,738 SF

PROPERTY HIGHLIGHTS

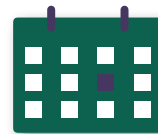
- Traffic Count on Milwaukee Street - 26,000 VPD
- Traffic Count on Emerald Street - 17,000 VPD
- Located Across the Street from the 1,200,000 SF Boise Towne Square which is the Largest Indoor Regional Mall in Idaho.
- Westpark Towne Plaza is one of the most well located Retail Centers in all of Idaho.
- Some of the most well known Names in Retail including Dillard's, JCPenney, Nordstrom Rack, Macy's, Target, Dick's Sporting Goods, REI, Cabela's.
- Coming Soon - Flooring Liquidators.



AVAILABLE SPACE
4 SUITES AVAILABLE
1,395 SF - 7,083 SF



BUILDING SIZE
239,738 SF



LEASE TERM
Negotiable



ASKING RATE
Contact Agents



INTERMOUNTAIN
COMMERCIAL REAL ESTATE

DARIN BURRELL
darin@icreboise.com
(208) 286-2260 office
(208) 860-0332 cell

SETH MCCORMACK
seth@icreboise.com
(208) 286-2272 office
(208) 918-1030 cell

www.icreboise.com | 380 E. Parkcenter Boulevard Suite 290, Boise, ID 83706 | (208) 429-8603 office



EXECUTIVE SUMMARY

Available SF: **1,395 - 7,083**
 Lease Rate: **Contact Agents**
 Building Size: **239,738 SF**

Market: **Boise Mall Area**
 Cross Streets: **Milwaukee Street & Emerald Street**

SUITES AVAILABLE

STE 337		RETAIL		1,395 SF
STE 411		RETAIL		2,845 SF
STE 501		RETAIL		2,550 SF
STE 331		RETAIL		7,083 SF

DEMOGRAPHICS

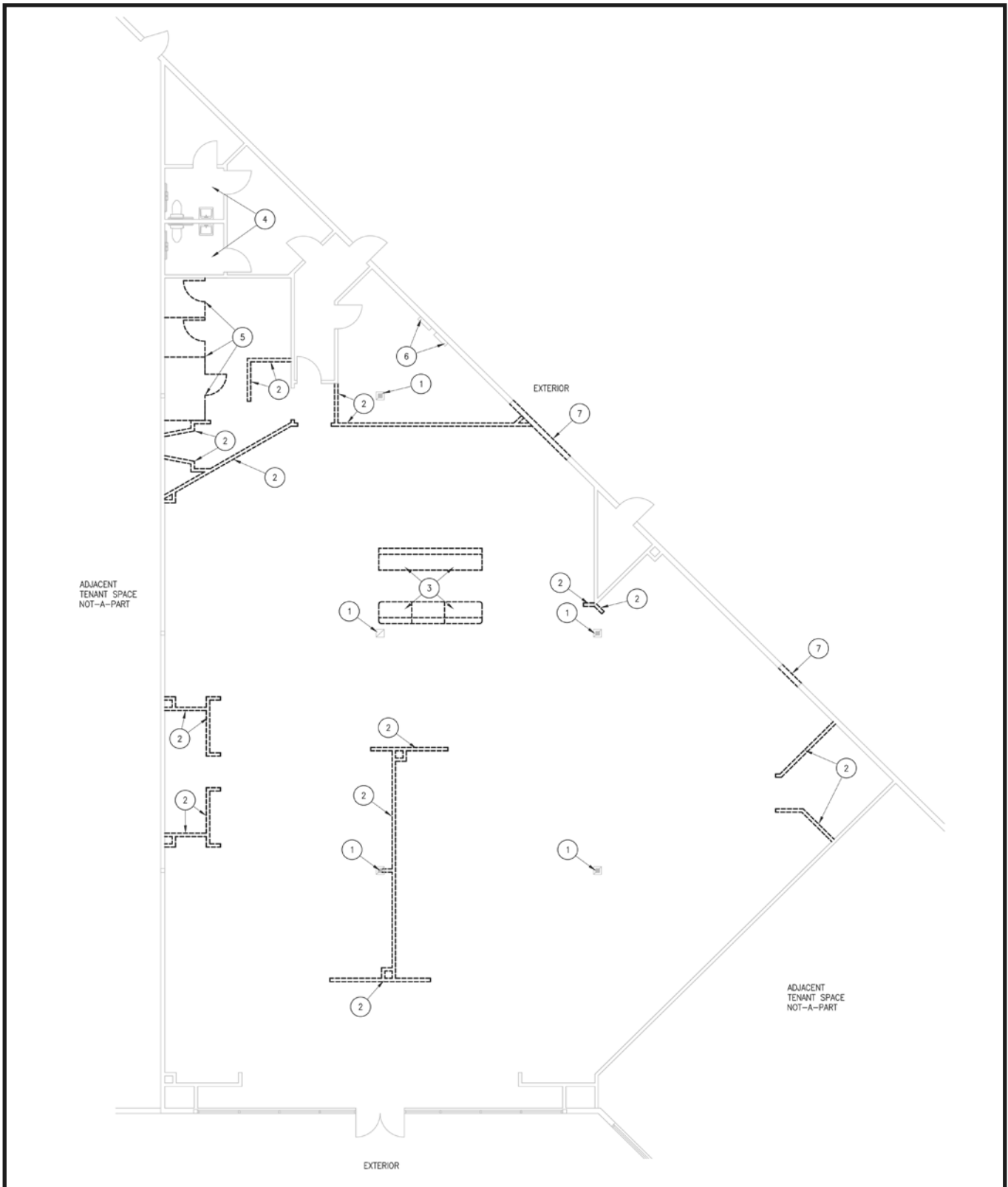
	1 Mile	2 Miles	3 Miles
Total Population:	11,339	51,197	103,129
Daytime Population:	18,171	52,551	81,878
Average House Hold Income:	\$83,904	\$90,174	\$101,183

2025

The information has been obtained from sources believed reliable and, while we do not doubt its reliability, ICRE has not verified it and makes no guarantees, warranties or representations, expressed or implied, as to its accuracy. All interested parties should conduct their own independent investigation and rely on those results.



STE 331 | RETAIL | 7,083 SF



STE 411 | RETAIL | 2,845 SF



STE 501 | RETAIL | 2,550 SF



STE 337 | RETAIL | 1,395 SF



STE 331 | RETAIL | 7,083 SF



