

CENTURY COMMERCE CENTER

AVAILABLE FOR LEASE

S 196TH ST & 70TH AVE S | KENT, WA

WAREHOUSE/OFFICE SPACE AVAILABLE



CALL BROKERS FOR RATES

Centrally located in Kent, this seven building, 113,166 square foot office and warehouse property offers easy access to I-5, I-405 and SR-167.

With units ranging between 1,900 and 11,000 square feet, Century Commerce Center is able to accommodate your business needs!

PROPERTY FEATURES:

- Small bays with office area and restrooms
- Grade-level loading (12'x14')
- Flexibility for industrial users
- 208-V, 3-P power
- 14' - 20' ceiling height for most bays
- Insulated buildings
- Close proximity to major highways



SPENCER MEAD
206.787.1476
smead@neilwalter.com

GRIFFIN DAY
206.261.4012
gday@neilwalter.com

*professionally
managed/owned by:*



CENTURY COMMERCE CENTER

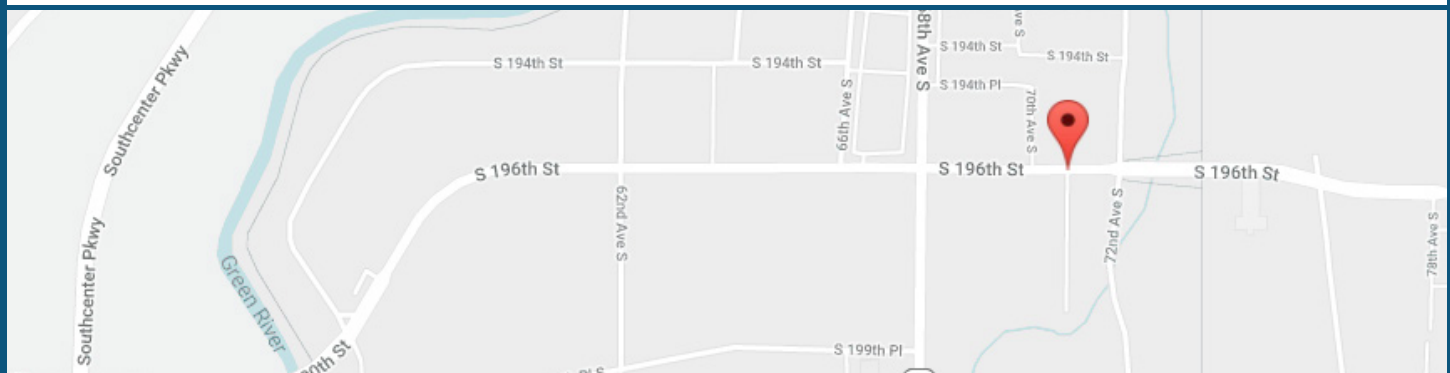
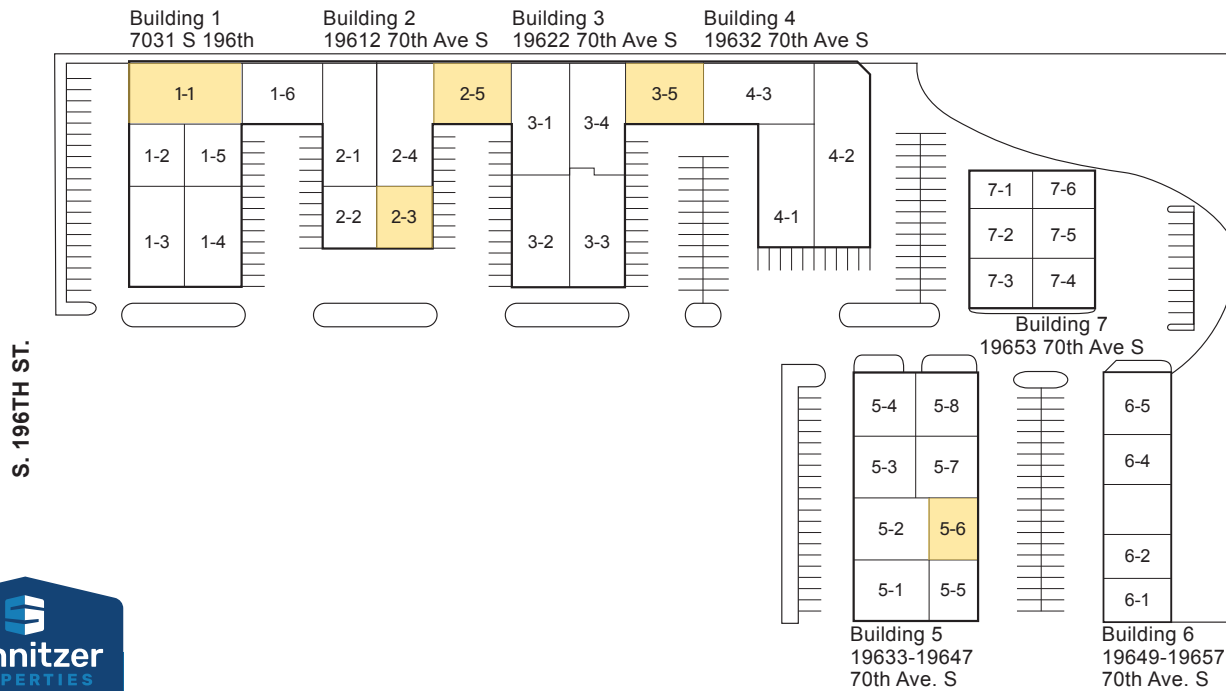
S 196TH ST & 70TH AVE S | KENT, WA



Current Lease Opportunities

Unit #	Total SF	Office SF	Monthly NNN (Estimated)	Comments
1-1	4,490 SF	425 SF + Mezz	\$1,976	Available Now; 1 GL door
2-5	3,200 SF	317 SF	\$1,408	Available 8/1/2026; 1 GL door
3-5	3,098 SF	352 SF	\$1,363	Available Now; 1 GL door
2-3	2,262 SF	395 SF + Mezz	\$995	Available 8/12026; 1 GL door
5-6	1,901 SF	417 SF	\$836	Available Now; 1 GL door

CALL BROKERS FOR RATES



SPENCER MEAD
206.787.1476
smead@neilwalter.com

GRIFFIN DAY
206.261.4012
gday@neilwalter.com

550 S Michigan St
Seattle, WA 98108
206.787.1800
www.neilwalter.com

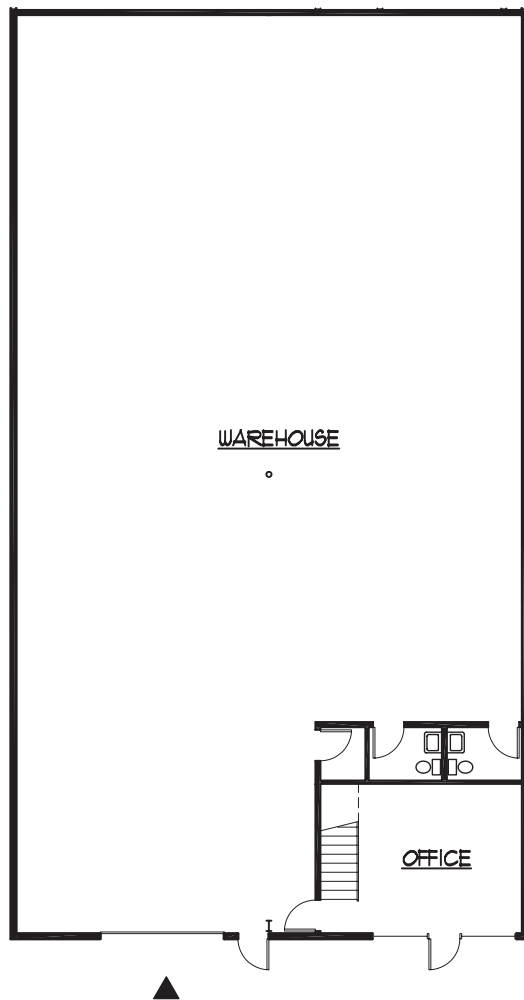
All information references in this document are approximate. The information contained herein is contained from sources deemed reliable. It is provided without representation, warranty, or guarantee, expressed or implied as to accuracy. Prospective buyer or tenant should conduct its own independent investigation relating to the property, government codes and regulations, allowed uses, and all other matters, regardless of whether they are referred to or contained in this document.

CENTURY COMMERCE CENTER

SOUTH 196TH ST & 70TH AVE S | KENT, WA



Unit #	Total SF	Office SF	Monthly NNN (Estimated)	Comments
1-1	4,490 SF	425 SF + Mezz	\$1,976	Available Now; 1 GL door



BAY 1 MAIN FLOOR PLAN



MEZZ. FLOOR PLAN

SPENCER MEAD
206.787.1476
smead@neilwalter.com

GRIFFIN DAY
206.261.4012
gday@neilwalter.com

550 S Michigan St
Seattle, WA 98108
206.787.1800
www.neilwalter.com

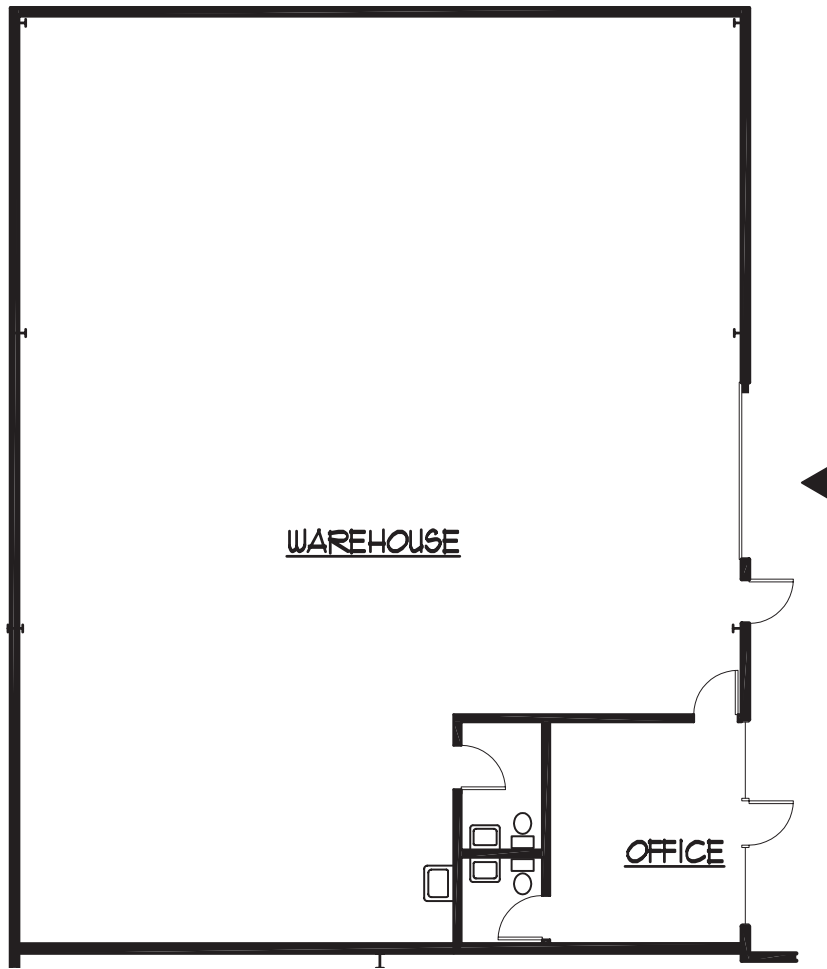
All information references in this document are approximate. The information contained herein is contained from sources deemed reliable. It is provided without representation, warranty, or guarantee, expressed or implied as to accuracy. Prospective buyer or tenant should conduct its own independent investigation relating to the property, government codes and regulations, allowed uses, and all other matters, regardless of whether they are referred to or contained in this document.

CENTURY COMMERCE CENTER

S 196TH ST & 70TH AVE S | KENT, WA



Unit #	Total SF	Office SF	Monthly NNN (Estimated)	Comments
2-5	3,200 SF	317 SF	\$1,408	Available 8/1/2026; 1 GL door



SPENCER MEAD
206.787.1476
smead@neilwalter.com

GRIFFIN DAY
206.261.4012
gday@neilwalter.com

550 S Michigan St
Seattle, WA 98108
206.787.1800
www.neilwalter.com

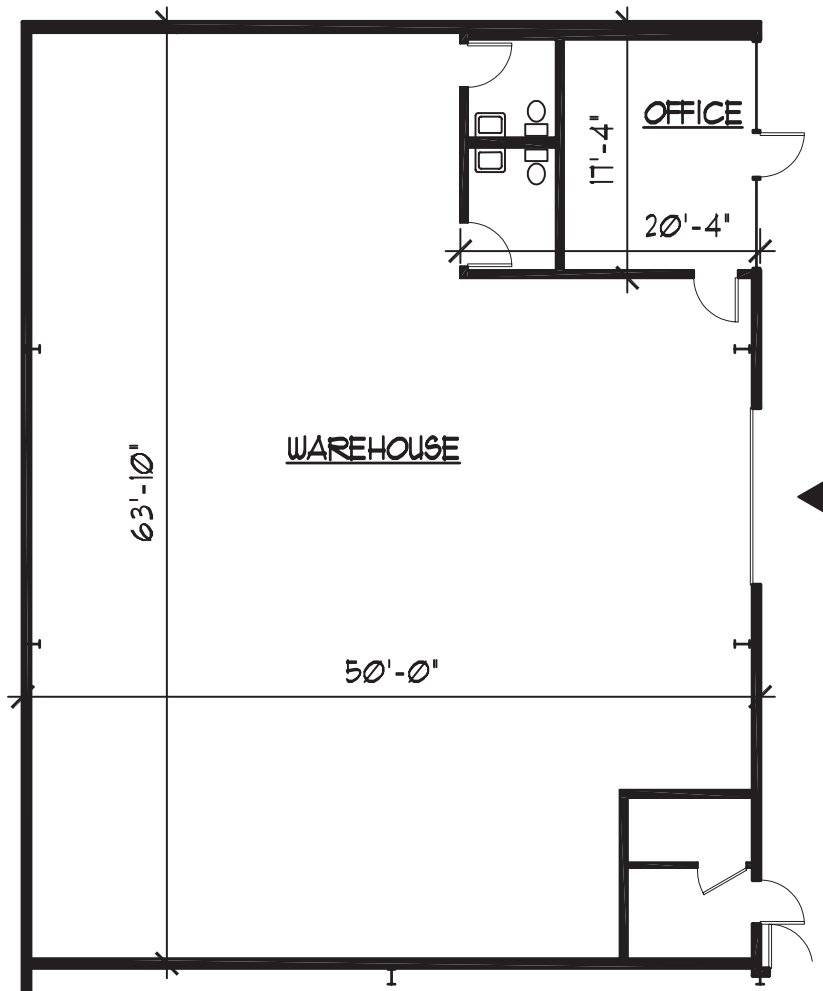
All information references in this document are approximate. The information contained herein is contained from sources deemed reliable. It is provided without representation, warranty, or guarantee, expressed or implied as to accuracy. Prospective buyer or tenant should conduct its own independent investigation relating to the property, government codes and regulations, allowed uses, and all other matters, regardless of whether they are referred to or contained in this document.

CENTURY COMMERCE CENTER

S 196TH ST & 70TH AVE S | KENT, WA



Unit #	Total SF	Office SF	Monthly NNN (Estimated)	Comments
3-5	3,098 SF	352 SF	\$1,363	Available Now; 1 GL door



UNIT 5 MAIN FLOOR PLAN

SPENCER MEAD
206.787.1476
smead@neilwalter.com

GRIFFIN DAY
206.261.4012
gday@neilwalter.com

550 S Michigan St
Seattle, WA 98108
206.787.1800
www.neilwalter.com

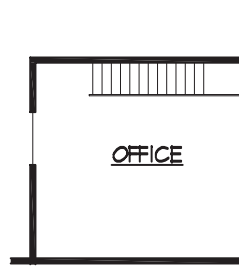
All information references in this document are approximate. The information contained herein is contained from sources deemed reliable. It is provided without representation, warranty, or guarantee, expressed or implied as to accuracy. Prospective buyer or tenant should conduct its own independent investigation relating to the property, government codes and regulations, allowed uses, and all other matters, regardless of whether they are referred to or contained in this document.

CENTURY COMMERCE CENTER

S 196TH ST & 70TH AVE S | KENT, WA



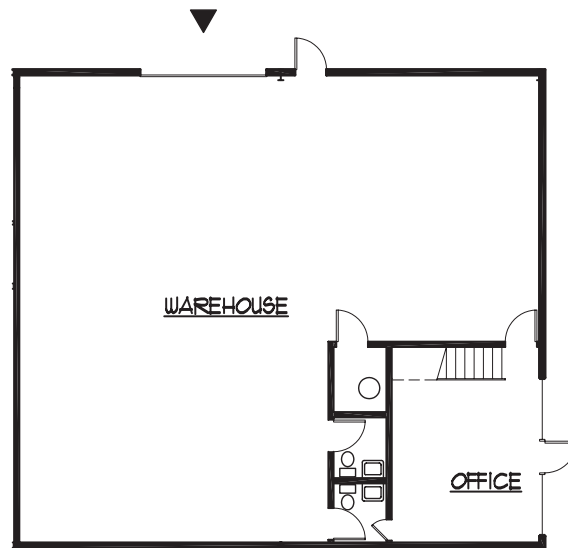
Unit #	Total SF	Office SF	Monthly NNN (Estimated)	Comments
2-3	2,262 SF	395 SF + Mezz	\$995	Available 8/12026; 1 GL door



MEZZ. FLOOR PLAN

1/16" = 1'-0"

MEZZ. AREA = 395 sf



SPENCER MEAD
206.787.1476
smead@neilwalter.com

GRIFFIN DAY
206.261.4012
gday@neilwalter.com

550 S Michigan St
Seattle, WA 98108
206.787.1800
www.neilwalter.com

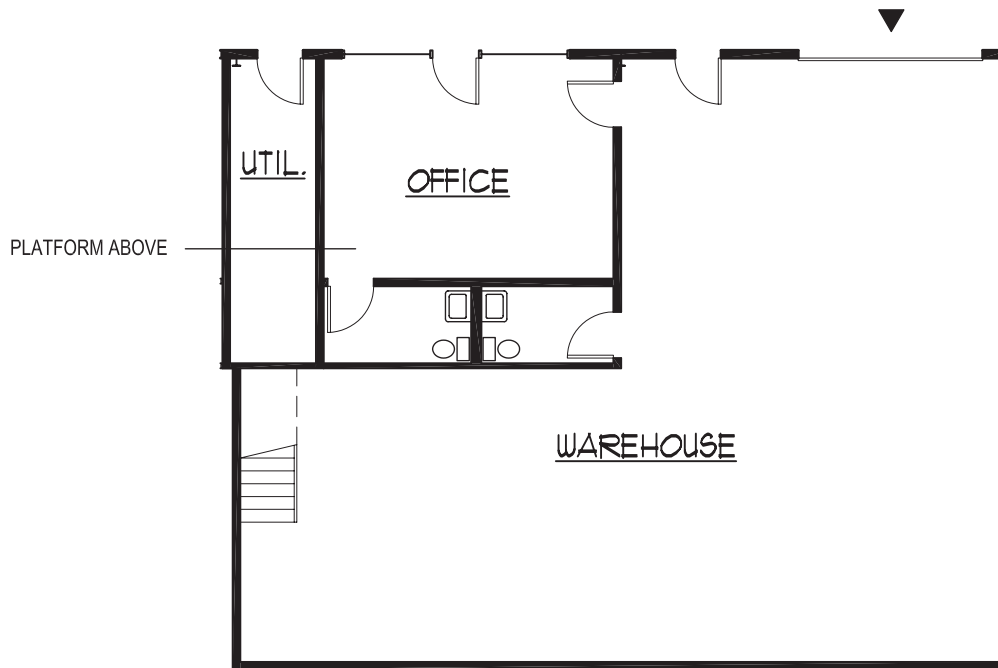
All information references in this document are approximate. The information contained herein is contained from sources deemed reliable. It is provided without representation, warranty, or guarantee, expressed or implied as to accuracy. Prospective buyer or tenant should conduct its own independent investigation relating to the property, government codes and regulations, allowed uses, and all other matters, regardless of whether they are referred to or contained in this document.

CENTURY COMMERCE CENTER

S 196TH ST & 70TH AVE S | KENT, WA



Unit #	Total SF	Office SF	Monthly NNN (Estimated)	Comments
5-6	1,901 SF	417 SF	\$836	Available Now; 1 GL door



SPENCER MEAD
206.787.1476
smead@neilwalter.com

GRIFFIN DAY
206.261.4012
gday@neilwalter.com

550 S Michigan St
Seattle, WA 98108
206.787.1800
www.neilwalter.com

All information references in this document are approximate. The information contained herein is contained from sources deemed reliable. It is provided without representation, warranty, or guarantee, expressed or implied as to accuracy. Prospective buyer or tenant should conduct its own independent investigation relating to the property, government codes and regulations, allowed uses, and all other matters, regardless of whether they are referred to or contained in this document.